

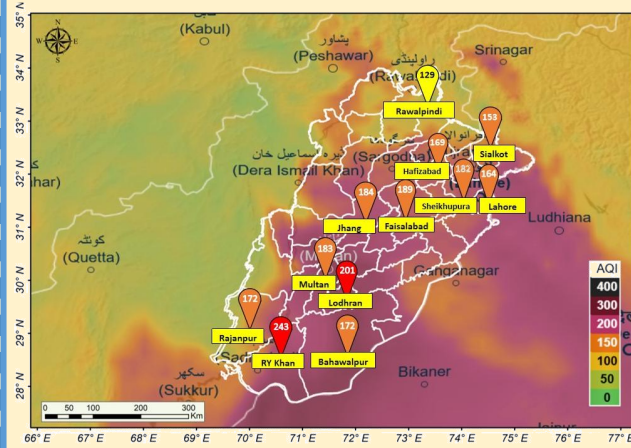


PROVINCIAL DISASTER MANAGEMENT AUTHORITY CM SITUATION REPORT



SMOG AND FOG SITUATION (LAST 24 HOURS)

DISTRICTS WITH HIGHEST AQI



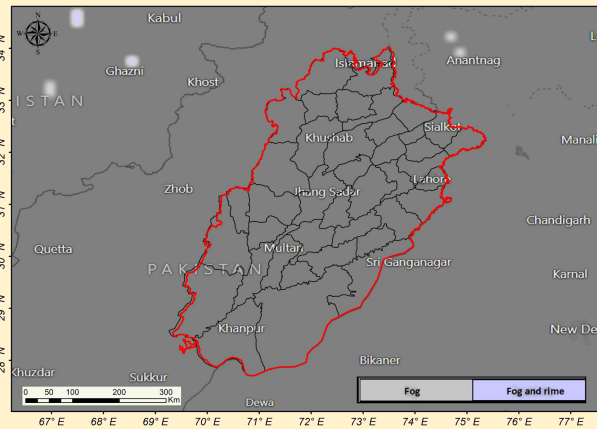
AQI LIMITS

00-50	Good
51-100	Satisfactory
101-150	Moderate
151-200	Unhealthy for sensitive group
201-300	Unhealthy
301-400	Very unhealthy
401 & above	Hazardous

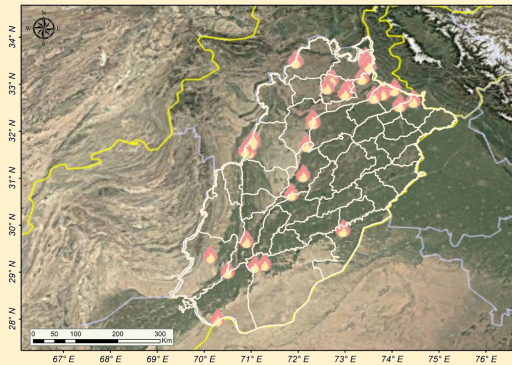
DISTRICTS WITH HIGHEST AQI

RY Khan	243 - Unhealthy
Lodhran	201 - Unhealthy
Faisalabad	189 - Unhealthy for sensitive group
Jhang	184 - Unhealthy for sensitive group
Multan	183 - Unhealthy for sensitive group

LAST 24 HOURS FOG / RIME



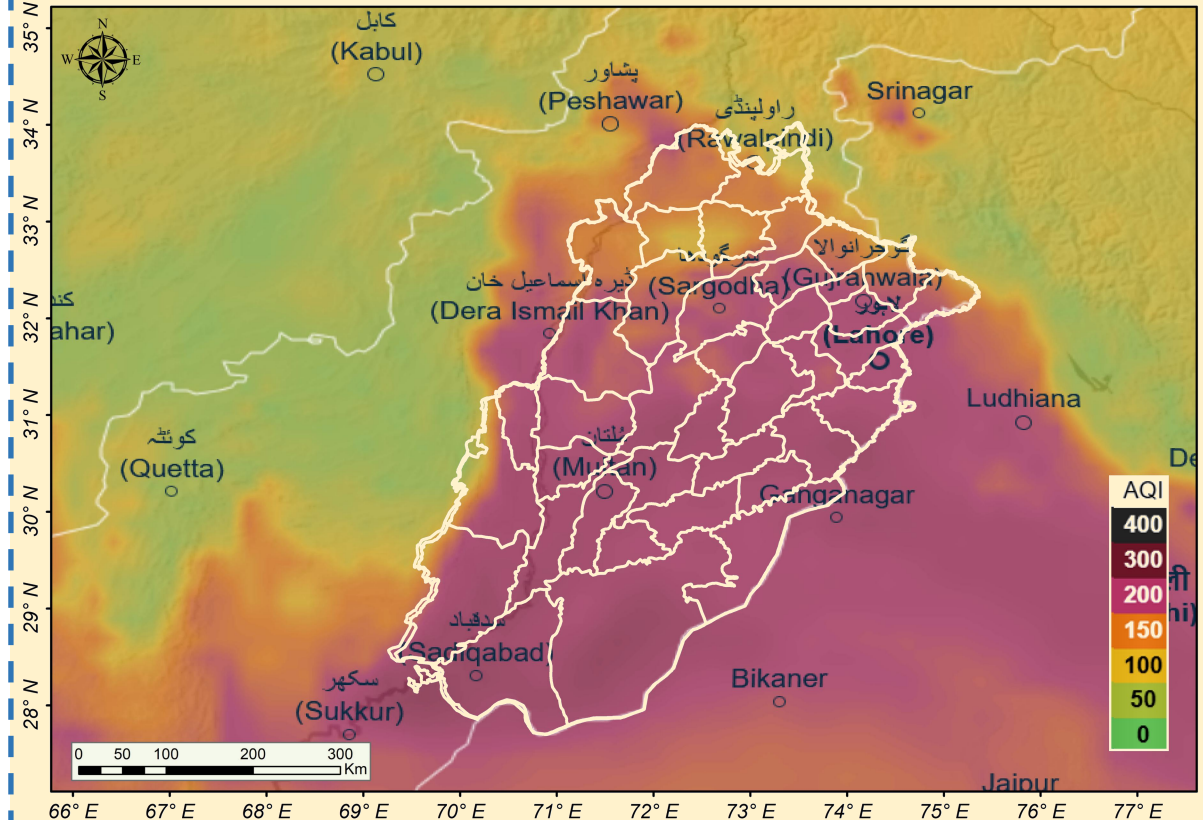
THERMAL ANOMALIES



Thermal Anomalies in Attock, Bahawalnagar, Bahawalpur, Bhakkar, Chakwal, Gujrat, Jhang, Jhelum, Khushab, Muzaffargarh, RY Khan, Rajanpur, Rawalpindi and Sargodha

SMOG AND FOG FORECAST (NEXT 24 HOURS)

NEXT 24 HOURS FORECASTED AQI



Air quality may likely remain Unhealthy, especially for sensitive groups in some Districts. Limiting outdoor activities is recommended.

DROUGHT MONITOR

WEATHER & DROUGHT SITUATION IN JANUARY 2025

Western and South Western Punjab are experiencing mild drought like conditions due to **moisture stress and less than average rainfall** over the past three months

WEATHER OUTLOOK FOR FEBRUARY 2025

A **Slight tendency for slightly below-normal rainfall** is anticipated in **Northern Punjab** during February 2025.

In contrast, the **southern regions** are likely to experience **rainfall that is expected to be closer to normal**, with a reduced negative anomaly as per the region's climatological patterns

DROUGHT OUTLOOK FOR FEBRUARY 2025

Slightly below normal rainfall is expected which will further decrease the soil moisture in the drought prone areas of Punjab.

Mild drought like conditions have developed in Punjab, which may deepen due to deficient rainfall

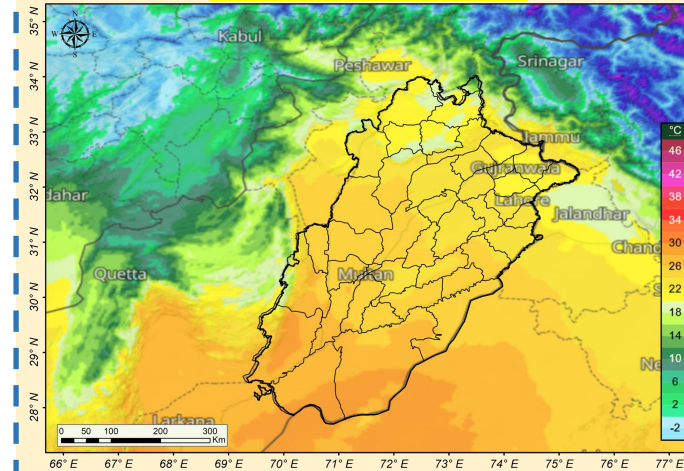
ADVICE TO FARMERS

- Given the lower-than-usual rainfall, ensure that **irrigation is done at intervals** according to the crop's needs, to ensure a good yield. At the same time, take **special care of chemical fertilizers**, etc. Isolated showers / hails/ windstorm may disrupt the harvesting activities of Kharif crops, particularly in the northwestern parts of the country.
- To achieve a good yield, it is necessary to **control weeds** in the crop, which not only reduces the yield but also other negative impacts. **Apply herbicides** to destroy these weeds. **Do not spray during strong winds** and follow the advice of the agricultural department.
- As the **wheat crop will be entering the booting stage**, the growth of crops will accelerate with the gradual increase in temperature this month. It is **crucial to water the crops thoroughly during this phase**.
- However, **judicious use of available water stock** is recommended for the lower half of Punjab.

WEATHER SITUATION

LAST 24 HOURS

LAST 24 HOURS MAX TEMP (°C)

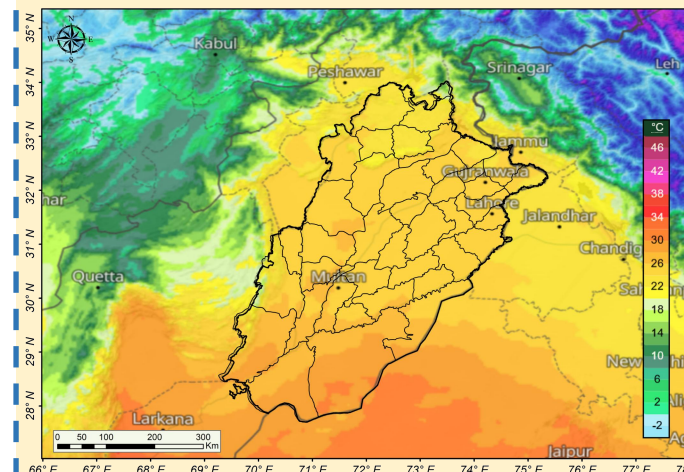


Maximum Temperature(°C) recorded (Till 1700 HRS, 13 February, 2025)

- Murree = 11.8 °C
- Chakwal = 22.0 °C
- Sheikhupura = 22.8 °C
- Attock = 23.5 °C
- Gujranwala = 23.5 °C
- Narowal = 23.6 °C
- Sialkot City = 24.3 °C
- Faisalabad = 24.5 °C
- Okara = 24.5 °C
- Kot Addu = 25.3 °C

NEXT 24 HOURS

NEXT 24 HOURS FORECASTED MAX TEMP (°C)



WEATHER FORECAST (24 HOURS)

Cold and dry weather is expected in most districts of the province

Friday:

- Partly cloudy** in South Punjab.
- Very cold and cloudy weather** is likely in Murree, Galiyat and surroundings.

Saturday:

- Very cold and partly cloudy weather** is likely in Murree, Galiyat and surroundings.