

DISTRICT DISASTER MANAGEMENT PLAN 2021

Division: Lahore
District: Sheikhpura



IDP Camp in 2009



Earthquake



Floods in 2014



Fire incident at Lahori Gate, Lahore – Jan 2016

Prepared by:

Approved by:

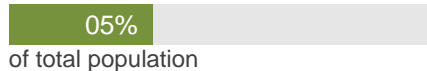


TABLE OF CONTENTS

Executive Summary	3
Aim and Objectives	4
District Profile	5
Coordination Mechanism	12
Risk Analysis.....	22
Mitigation Strategy	28
Early Warning	31
Rescue Strategy	34
Humanitarian Assistance	35
Annex I: Identified sites for displaced persons	36
Annex II: List of hazard prone villages/ Revenue Estate (NAMES REquired)	38
Annex III: List of Health Facilities and their vulnerability to Hazards	41
Annex IV: List of vulnerable Educational institutions	46
Annex V: List of Industries with their risk level	50
Annex VI: List of NGO working in the District	54
Annex VII: Contact list of main stakeholders / departments	58
Annex VIII: List of volunteers	60
Annex IX: Political Constituencies	65
Annex X: Local Government.....	66
Annex XI: Data Collection Performas	68
Annex XII: Camp Management SOPs	71
Annex XIII: Flood Bunds	72
Annex XIV: River Discharge Rates.....	75
Annex XV: List of Basic Terms	76

XX

Estimated number of people at risk of **floods** in 2022



Risk: Medium

XX

Estimated number of people at risk of Hill Torrent in 2022



Risk: Low

XX

Estimated number of people at risk of earthquake in 2022



Risk: Low

XX

Estimated number of people at risk of epidemic in 2022



Risk: Medium

EXECUTIVE SUMMARY

Sheikhupura is situated at a distance of about 36 Km from Lahore, the provincial headquarters. Sheikhupura lies 31°42'51.16" North latitude and 73°59'3.49" East longitude.

District Sheikhupura is an area vulnerable to main menace of intensive rain & flooded water bodies. Floods normally hit the district during the monsoon season starting from early June to late August while overflow of river Ravi has been historically the principal cause of flood in this district.

However, with the construction of Dams by India on the River Ravi in the 1990s and subsequent decrease in its flow levels, flood threat to the district has been minimal in recent years. The main threats are the overflow of water channels and Nullahs within the district (Main Nullah Deg, Niki Nullah Deg, Nullah Bhed and Nullah Laila).

As Sheikhupura is an industrial city and also having one of the big Machike oil Depot situated at Sargodha Road, so it is inevitable to avoid industrial accidents, in this view an action plan for the prevention of the industrial accidents through strict hindrance to safety measures and relocation of hazardous industries from residential areas is underway by the industries commerce & investment Department.

According to board of revenue, Punjab, Disaster Management Department / PDMA earthquake jolts data also reveals that epicenters also reported in central Punjab near Nankana Sahib the adjacent City of Sheikhupura. Taking the safety measures comprehensive campaign for the survey of dangerous buildings has been launched.

The plan classifies small, medium and large scale disasters to articulate the corresponding response. The plan integrates the standard operation procedures (SOP's) of various provincial govt departments and district govt, and proposes a consistent approach for reporting damages, needs and relief assessment.

The plan has been designed on the risk management standards engaging the philosophy of a multi agencies and multi structure approach to risk minimization. The plan identifies the risk environment for the district Sheikhupura and outlines the key institutional and programing components relative to effective risk management and emergency response and recovery.

The plan is dynamic document which may be extended in the future to incorporate any additional risk treatment options as they are identified through formal risk analysis.

AIM AND OBJECTIVES

The plan is aimed to manage emergencies by putting in place requisite mitigation measures and a well-coordinated and integrated response at district level.

The main objectives of the plan include:

- To develop a plan of action for the District Disaster Management Authority and other district stakeholders to set priorities and provide directions for disaster management;
- To define the roles of various stakeholders in disaster management in all the phases pre, during and after disaster;
- To raise awareness of stakeholders about disaster risks and the requirements for disaster management;
- To introduce coordination mechanism for immediate response and rehabilitation at district level;
- To enhance the effectiveness and timeliness of emergency response through the clarification of goals, strategies, roles and responsibilities;
- To strengthen response coordination between government departments and humanitarian organizations (UN agencies, I/NGOs);

DISTRICT PROFILE

Socio-Economic Indicators (Average)

S.No.	Particulars	Numbers
1.	Population	3321029
2.	No. of Tehsils	5
3.	No. of Revenue Estates	673
4.	No. of Corporations	03 (Sheikhuura, Muridke, Ferozwala)
5.	Municipal Committees	03 (Farooqabad, Safdarabad, Sharaqpur)
6.	Town Committees	09 (Narag Mandi, Nangal Sahdan, Khanpur Nabipur, Kot pindi Das, Jabrah, Manawala, Ferozewattwan, khanqa Dogran, Sachha Soda)
7.	Tehsil Council	05 (Sheikhupura, Ferozwala, Muridke, Sharaqpur, Safdarabd)
8.	Population Density (people per km ²)	557
9.	Family Size	7
10.	Pop Growth Rate	2.70
11.	Poverty Rate	15.48%
12.	Patient/Doctor Ratio	1000:1
13.	AMR	8.6%
14.	IMR	57.48%
15.	MMR	260/ILC
16.	Literacy Rate	65%
17.	Global Acute Malnutrition (GAM) rate	17.5%
18.	Severe Acute Malnutrition (SAM) rate	11.5%
19.	Percentage of population having access to clean drinking water	25%
20.	Annual Crime	12243

Population

Total	Male	Female	Vulnerable People (PLWs, disabled, aged)
3321029	1729082	1591947	103010 (Blind, Deaf, Mute, Crippled insane, mentally retarded, multiple disability others)

Source/Note: Click here to enter text.

Number of Dwelling Units	Kaccha (Mud/clay)	Pakka (Bricks & Morter)
453248	124974	328274

Area (in acres)

Total Area of District in Km ²	Area under cultivation	Cultivation in Settled Area	Cultivation in Baid Area
919621	789399	774541	109689

Literacy Rate

Overall	Rural		Urban		Total	
	Male	Female	Male	Female	Male	Female
65%	71%	52%	77%	69%	73%	59%

Source/Note: Education Department

Government Schools

		Schools	Enrollment
Total/ Overall		1,293	327,868
Boys	Primary	547	106,243
	Middle	86	35,380
	High	78	21,993
Girls	Primary	385	105,595
	Middle	133	33,553
	High	71	19,937
Co-Education	Primary	0	0
	Middle	0	0
	High	0	0
Special Education		7	1104

Private Schools

		Schools	Enrollment
Total/ Overall		1,026	
Boys	Primary	24	8,592
	Middle	593	101,858
	High	180	46,619
Girls	Primary	0	0
	Middle	68	12,882
	High	171	49,679
Co-Education	Primary	0	0
	Middle	0	0
	High	0	0
Special Education			

Higher/Technical/Professional Education (Public & Private)

Particulars	College	Universities	Professional	Technical	Commerce	Total
No of Institution	50	1	1	4	7	57
No of Students	24172	1300	179	1218	1260	25432

Health Facilities

Particulars	Primary	Secondary	Tertiary	Private Hospital	Total
No. of Facilities	94	5		99	198
Annual OPDs	1638396	1471151			3109447
No of beds	228	970			1198
Doctors Available	65	136			201
Paramedical staff	352	77			429
Ambulances available	12	19			31
Mobile Medical Units					

Livestock: Small Animals (goats, sheep etc.): 271,090 Big Animals (cows, buffalos, camel etc.) 821,253

Main source of livelihood of the community?(in percentage)

Agriculture	Livestock	Poultry	Fish Farming	Services (Public & Pvt)	Business	Expatriates	Industrial Labor	Skilled Labor	Unskilled Daily Labor	General Labor
65%	15%	3%	1%	%	5%	%	83227	29129	68226	97355

Disaster History - Floods (since 1970)

S#	Year	No. of people affected	No. of deaths	No. of Revenue Estates affected	Houses Damaged (Partially)	Houses Damaged (Fully)	Compensation Paid (Rs.)	Financial Impact (including infrastructure damaged)
1	1973							
2	1976							

3	1988							
4	1997							
5	2013			6				
6	2014		1	16		1	1600000	
7								
8								
9								
10								
11								
12								

Disaster History – Other disasters (since 1970)

S#	Year	Disaster Type	No. of people affected	No. of deaths	Remarks
1					
2					
3					
4					
5					
6					
7					
8					
9					
10					

General Information

Particulars	Detail
Neighboring districts and their vulnerabilities	
Topographical Features	District Sheikhupura is bounded on the South by Nankana Sb, the North by Gujranwala and Hafizabad districts, on the North-East by Narowal ,Sialkot and Amrataser(India) districts, on the East by Lahore district.main cause of Flood in District sheikhupura is drainage system of Nikki Deg, Deg Nullah, Bhed and Lilla and Mango ki Drain. Vulnerable tehsils of Sheikhupura regarding flood are Muridke, Ferozwala, Sharaqpur.
Weather/Climate pattern	e.g. max. and min. temperature, annual precipitation, storms, heat waves, snow fall etc. Month Max. Min. Rainfall (mm) (Data based on average of 05 years) (No unusual feature in weather/ climate pattern)
	Jan 21.4 04 20
	Feb 27.5 05.8 28
	March 33.5 08.5 25
	April 39 16 04
	May 43.5 19.8 10
	June 44 21.5 15
	July 41 23.7 70
	August 37.5 23 80
	September 38.7 21 40
	October 37.4 15.5 03
	November 28.8 06 01
	December 25 04.3 05

Major Rivers	Name of river, passing through areas along with length in the district Major Barrages and their Flood levels River Ravi (87 KM Approx) passing through Jajjo Gill, Bryar Kohna, Longwala, Old Jandyala, Kala Khatai, Goal, Ravi Siphon, Jabbo, Shahdra, Saggian, Faizpur, Bhadru, Bukanpura, Bohewala, Sharaqpur, Fatowala, Chakki ghara, Noorpur Arayan, faizpur Kala, Nawan pind, Nano Dogar.
Major Nullahs / Streams	Names along with length in the district Flood levels Upper Chanab Canal, BRB Canal, MR Link Canal, Nullah Hussry RD 0+000- 116+426 (23.29 mile) discharge 4435 Cs falls in District Gujranwala, Deg Nullah RD 0+000-183+900 936.78 miles) discharge 15320 Cs Muridke – Narowal to outfall (DDC Channel), Bhaid Nullah R.D 0=0000-261+000 (52.20 mile) discharge 1777 Cs, Laila Nullah R.D 0+000-114+000 (22.80 mile) discharge 300 Cs, falls in District Sheikhupura and Nikki Deg Drain R.D 0+000-233+278 (46.66 mile) R.D 0+000-149+578 (29.92 mile) discharge 8102 Cs falls in District Sheikhupura and R.D 149+578-233+278(16.74 mile) falls in District Gujranwala Jaranwala Drain, Marh Drain
Motorway/Highway	Vulnerable points of motorway/highway Motorway M2 at Khanqah Dogran Motorway M2at Muridke Kot Ranjeet Lahore Sialkot Motorway is new phenomena . in futre it is expected that the said motorway may be blocked the flood water and low areas may be adopt the shape of ponds.
Railways	Vulnerable points of Railway Safdarabad Railway Station to Lahore Faisalabad Section Sheikhupura to Nankana Track, Sheikhupura to Sargodha track
Geological features	e.g. fault line, mountainous areas etc. There is no fault line and mountain area in Sheikhupura

Dams (including small dams)

Name of Dam	Location	GPS Coordinates	Capacity	High Flood Level	Critical Points, if any	Remarks
		X: Y:				
		X: Y:				

Major Embankments/Bunds

Name of Embankment	Length (km)	Starting Point (Revenue Estate /Tehsil Name)	Ending Point (Revenue Estate /Tehsil Name)	Name of Critical/ vulnerable Points	GPS Location of Critical/ Vulnerable Points	Remarks
Upper Chanab Canal	200	Gujrat	Sultanpur Tehsil Sharaqpur, Sheikhupura	Village Noorpur	X:74.074770 Y:31.423532	
Bhownewal Bund	10	Village Ghazipur	Village Khokharan Da warra Sharaqpur		X:74.091845 Y:31.429107	
Farooqabad Flood Embankment	5.18	Village Jhamke	Village Muridke	R.D114-115 Village Nokhar	X:73..825981 Y: 31.758133	Satisfactory Condition
Sheikhupura Flod	4.15	Lhr/Skp Road	Jandiala Road	RD 80-81 DDC Bund	X:73.922412 Y: 31.818622	Constructed Metalled

Embankment						Road on Bank
DDC Bund	27.32	Khanpur Ferozewala	Noorpur Arrian Sharaqpur	RD 80-81 DDC Bund	X:74.080774 Y:31.42166	Satisfactory Condition

Breaching Section

Name of Bund/ Embankment	Name of Breaching Section	Location with GPS Coordinates	Likely Affected Population			Likely Affected Revenue Estate	Remarks
			Male	Female	Children		
Upper Chanab Canal	Village Noorpur	X: Y:	2000	1000	600	3	
		X: Y:					

Power Houses/Grid Station/Oil Depot/other sensitive installations

Name	Capacity	GPS Coordinates	Name	Capacity	GPS Coordinates
Sheikhupura	132-KV	X:73.9698 Y: 31.682	Muridke	132-KV	X: 74.25 Y: 31.79
Joyianwala Hydral Power House	66-KV	X: 74.1134 Y: 317967	Ittehad Chemical	132-KV	X:74.2562 Y: 31.7641
Ayesha	132-KV	X:74.0368 Y: 31.7012	Narang	132-KV	X:74.51 Y: 31.90
Industrial Baig Pur	132-KV	X:74.0433 Y:31.8281	Sharaqpur	132-KV	X:74.0243 Y:31.6561
Sharaqpur road SkP	132-KV	X:74.0705 Y:31.4553	Bhiki Power Plant	1230MW	
Atta Abad	132-KV	X:74.0855 Y:31.6813			
Blessed SkP	132-KV	X:73.855 Y:31.6			
ICI Public SkP	132-KV	X:74.043 Y:31.6957			
BhikhiSkp	132-KV	X:73.855003 Y:31.600083			
Farooqabad	132-KV	X:73.8242 Y:31.7505			
Khanqah Dogran	132-KV	X:73.6313 Y:31.8256			
Kala Shah Kaku	220/L132-KV	X:74.2639 Y:31.7412			
Shamke	132-KV	X:74.2697 Y:31.7061			
Saba Power Station Machike		X:73.8744 Y:31.7328			
Total Parco Oil Depot		N 31.7322 E73.8799			
Shell Oil Depot		N31.7335 E73.8900			
Attock Oil Depot		N 31.733 E73.8781			
Hascol Oil Depot		N31.732 E73.8817			
Admore Oil Depot		N31.736 E.73.8736			

PARCO Diesel Depot		N31.735 E73.8800			

Airport / Landing Strips

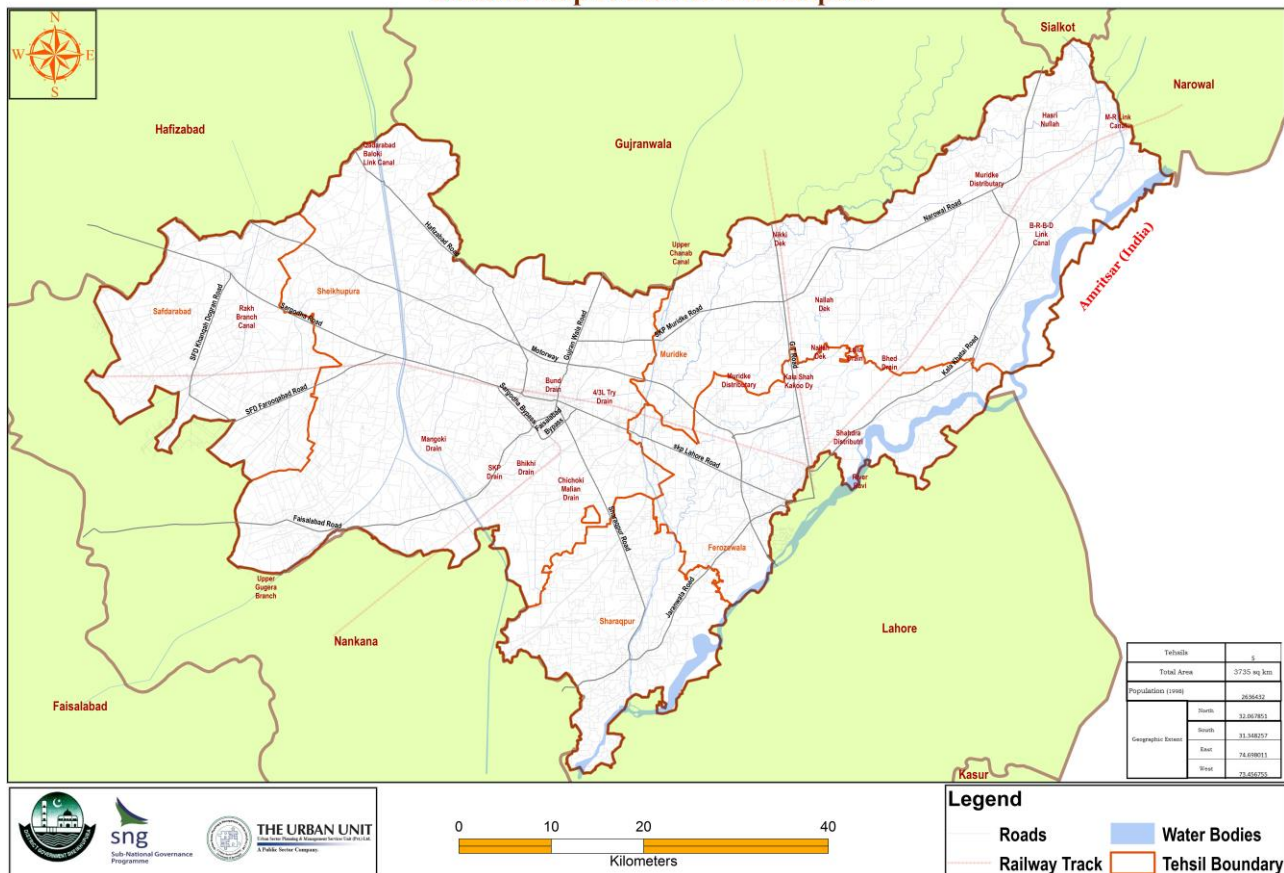
Type	Area Name	GPS Coordinates	Type	Area Name	GPS Coordinates
Helipad	Jamia High School	X:73.975788 Y: 31.720367			X: Y:
Helipad	Manawala Food Godown	X:73.691613 Y: 31.578995			X: Y:
Helipad	Farooqabad PC	X:73.825981 Y: 31.758133			X: Y:
Helipad	Jandiala Govt. School	X:73.922412 Y: 31.818622			X: Y:

Govt. storage facilities/warehouses in the district

Facility Type	Capacity	Location with GPS Coordinates	Facility Type	Capacity	Location with GPS Coordinates
Foods Godowns Muridke	500 Tons	Y: 31.79 X: 74.26	Food Godowns Narang	500 Tons	Y: 31.90 X: 74.51
Govt. House type Godown Safdarabad	Standar 4000M.T Operational 5500M.T	X:73.573789 Y: 31.728051	Govt. House Type Godown Khanqah Dogran	Standar 22500M.T Operational 30000M.T	X:73.580977 Y: 31.846980
Guest House Babakwal		X:74.365370 Y: 31.700950			X: Y:
Wandala Dyal Shah		X: 74.269433 Y: 31.632692			

District baseline/reference map

Baseline Map of District Sheikhupura



Source: District Government IT Section

Sheikhupura is an industrial city of "The Rice Valley" of Subcontinent and capital of Sheikhupura District in the province of Punjab about 40 km northwest of Lahore in Pakistan. It is the 16th largest city of Pakistan.

Elevation: 236 m

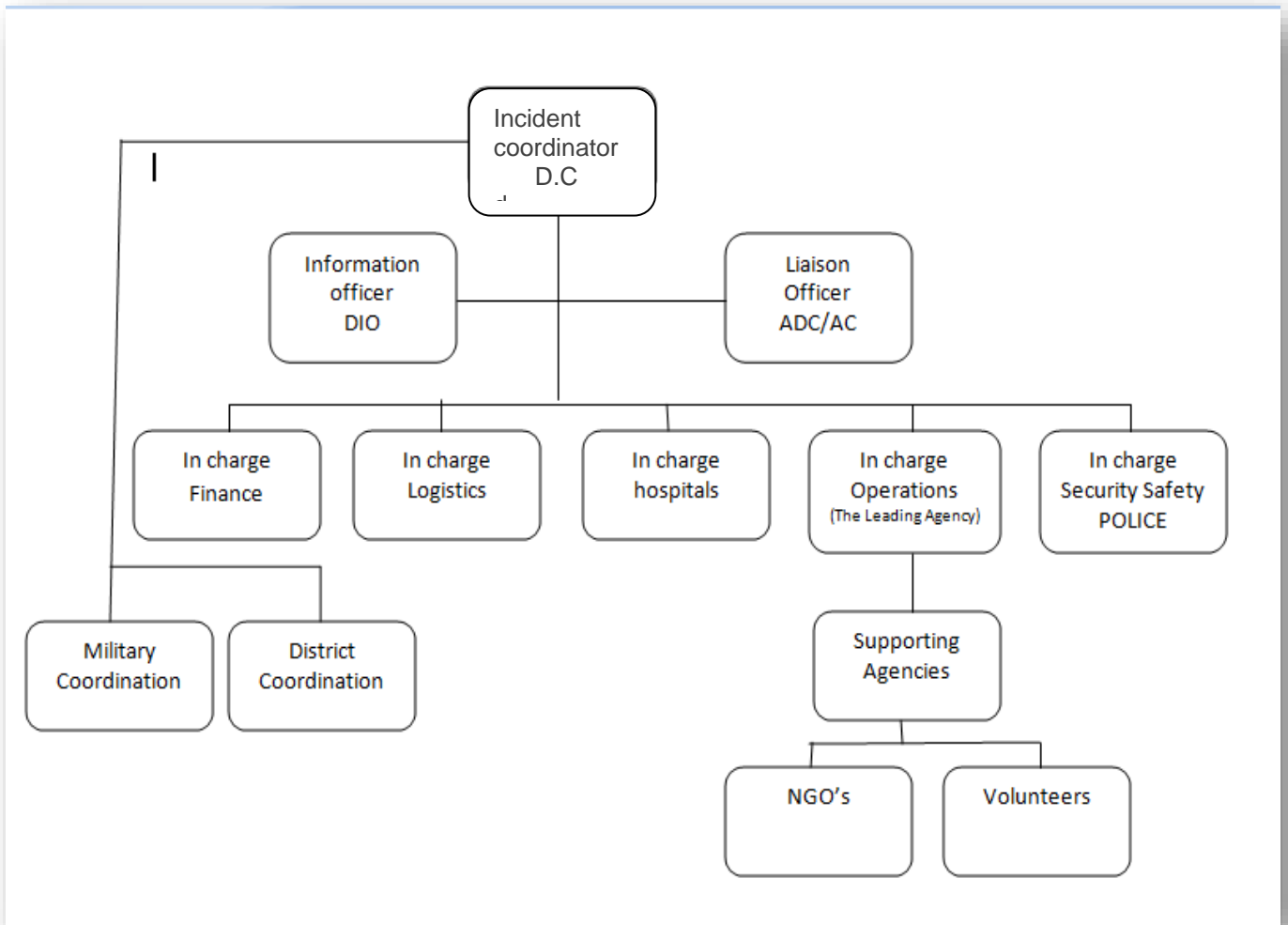
Area: 5,960 km²

Weather: 32°C, Wind W at 10 km/h, 24% Humidity

Province: Punjab, Pakistan

COORDINATION MECHANISM

Coordination Organogram (including Sector lead agencies/departments, Military, NGOs and Volunteers)



Powers and functions of District Disaster Management Authority under NDM Act 2010:

The District Authority shall be as the district planning, coordinating and implementing body for disaster management and take all measures for the purposes of disaster management in the district in accordance with the guidelines laid down by the National Authority and the Provincial Authority.

Without prejudice to the generality of the foregoing provisions, the District Authority may:

- a) prepare a disaster management plan including district response plan for the district;
- b) coordinate and monitor the implementation of the National Policy, Provincial Policy, National plan, Provincial Plan and District Plan;
- c) ensure that the areas in the district vulnerable to disasters are identified and measures for the prevention of disasters and the mitigation of its effects are undertaken by the departments of the Government at the district level as well as by the local authorities;
- d) ensure that the guidelines for prevention, mitigation, preparedness and response measures as laid down by the National Authority and the Provincial Authority are followed by all departments of the Government at the district level and the local authorities in the district;
- e) give directions to different authorities at the district level and local authorities to take such other measures for the prevention or mitigation of disasters as may be necessary;
- f) lay down guidelines for preparation of disaster management plans by the departments of the Government at the districts level and local authorities in the district;
- g) monitor the implementation of disaster management plans prepared by the departments of the Government at the district level;
- h) lay down guidelines to be followed by the departments of the Government at the district level;
- i) organize and coordinate specialized training programmes for different levels of officers, employees and voluntary rescue workers in the district;
- j) facilitate community training and awareness programmes for prevention of disaster or mitigation with the support of local authorities, governmental and non-governmental organizations;
- k) set up, maintain, review and upgrade the mechanism for early warnings and dissemination of proper information to public;
- l) prepare, review and update district level response plan and guidelines;
- m) coordinate with, and give guidelines to, local authorities in the district to ensure that pre-disaster and post-disaster management activities in the district are carried out promptly and effectively;
- n) review development plans prepared by the departments of the Government at the district level, statutory authorities or local authorities with a view to make necessary provisions therein for prevention of disaster or mitigation;
- o) identify buildings and places which could, in the event of disaster situation be used as relief centres or camps and make arrangements for water supply and sanitation in such buildings or places;
- p) establish stockpiles of relief and rescue materials or ensure preparedness to make such materials available at a short notice;
- q) provide information to the Provincial Authority relating to different aspects of disaster management;
- r) encourage the involvement of non-governmental organizations and voluntary social-welfare institutions working at the grass root level in the district for disaster management.
- s) ensure communication systems are in order and disaster management drills are carried out periodically; and
- t) perform such other functions as the Provincial Government or Provincial Authority may assign to it or as it deems necessary for disaster management in the district.

District Plan:

- a) There shall be a plan for disaster management for every district of the Province.
- b) The District Plan shall be prepared by the District Authority having regard to the National Plan and the Provincial Plan.
- c) The District Plan shall be reviewed and updated annually.

Additional Powers of District Authority:

For the purpose of assisting, protecting or providing relief to the community, in response to any disaster, the District Authority may:

- a) give directions for the release and use of resources available with any department of the Government and the local authority in the district;
- b) control and restrict vehicular traffic to, from and within, the vulnerable or affected areas;
- c) control and restrict entry of any person into, his movement within and departure from, a vulnerable or affected area;
- d) remove debris, conduct search and carry out rescue operations;
- e) provide shelter, food, drinking water and essential provisions, healthcare and services;
- f) establish emergency communication system in the affected area;
- g) make arrangements for the disposal of the unclaimed dead bodies;
- h) direct any department of the Government of the Province or any authority or body under the Government at the district level to take such measures as are necessary in its opinion;
- i) require experts and consultants in the relevant fields to advise and assist as it may deem necessary;
- j) procure exclusive preferential use of amenities from any authority or person;
- k) construct temporary bridges or other necessary structures and demolish structures which may be hazardous to public or aggravate the effects of the disaster;
- l) ensure that the non-governmental organizations carry out their activities in an equitable and non-discriminatory manner; and
- m) take such other steps as may be required or warranted to be taken in such a situation.

Revenue Department (Functions and Responsibilities)

In case of any disaster or calamity the head of the revenue department in the district i.e. the Deputy Commissioner should ensure that the following measures and steps have been taken:

- Taking everyone on board is perhaps the most important thing to do. Regular meetings of DDMA should be held to clearly highlight the roles and duties of DPOs, XENs etc.
- Pre-flood meeting should be held and duties of all concerned officers and departments should be clearly defined and assigned.
- A district disaster management plan should be prepared using the set template and updated regarding any disaster or emergency that may strike the district.
- A focal person for the disaster or calamity should be nominated and his/her number should be communicated to all concerned departments.
- Proper stock taking should be done regarding available stocks of food and rations. Similarly stock regarding machinery and equipment should also be taken and inventories should be prepared. Out of order machinery should be repaired or replaced.
- Committees should be formed and constituted which will deal with various functions during a flood or emergency. Purchasing of food items, food, and machinery should all be done through committees.
- Identification of Low lying, medium and high vulnerability levels with flood level
- In case of evacuation the district administration should be very clear about the places where the relief camps or shelters will be established. Teams should be formulated which will look after these camps and will be in-charge for provision of tents, food, water and maintaining general law and order. Provision of cooked food is also to be ensured.
- Proper ware houses and stores should be made available for storing of aid and donated items that may be received from authorities such as PDMA, WFP etc. A committee should be constituted to look after the record of all the items in the store.
- Proper crop surveys or girdawaris should be conducted through the revenue officials so that crop damage assessment can be made after disaster or flood affects the district. These surveys will also help in determining the identity of the true owners as well.

- Post damage assessment should be carried out by joint teams constituted of patwaris, teachers, and agriculture field assistants. Technology should be involved and android sets should be used to gather accurate data.
- Round the clock active control rooms should be set up and the numbers be circulated to all concerned. The control rooms should be equipped with wireless, telephones and computers. All info gathered or received should be conveyed to the concerned. The control room should have representatives of concerned departments such as police, health, 1122, and revenue.
- Early warning is critical in saving lives. The local revenue officials along with local police should be deployed to warn the people against the oncoming disaster and to urge them to vacate the disaster prone areas and villages. Loudspeakers, mosque speakers and word of mouth should be used. Banners and posters can also be used.
- Data collection is of prime importance and the senior network administrator should be declared as the focal person for collection of relevant information such as number of casualties, damages to infrastructure, injured, perished livestock etc. for onward submission to PDMA etc.
- Mock exercises should be carried out along with all concerned departments specially 1122, Police, civil defence and Pakistan army regarding the action plan during any emergency or flood. This will give a fair idea about the preparedness of the district.
- Availability of vehicles should be ensured for use during any emergency especially off road vehicles like jeeps.
- Suitable locations should be identified for accommodating armed forces like the Pakistan army. Normally schools, colleges or stadiums are allocated for the armed forces

Checklist for Revenue Department:

- Survey of entire District (Preparation of Village level information by Patwari)
- Identification of Low lying, medium and high: vulnerability levels with flood level
- Liaison of Patwari with Numberdars of their respective villages
- Contacts of all revenue staff posted near river belts and their output in floodprone areas
- List of Numberdars with their contacts, volunteer from low lying settlements with contact numbers
- Prepare list of vulnerable villages and make an estimate of likely affected population in such villages in the event of flood
- Name and contact numbers of private boat owners and operators Announcement of Flood Warning at settlement level – Patwari responsible Forced evacuation with police
- Rapid assessment for relief goods and ration provision Coordination and reporting
- Carry out survey of entire flood affected areas to assess losses in collaboration with Agriculture, Livestock and Education Department
- Conduct crop damaged/ house damaged surveys

Cooperations, M.C, Town committees, and Tehsil Councils.

- Local Bodies plays an important role of providing municipal services in the district including clean drinking water, sanitation facilities, maintenance of parks and removal of encroachment etc.
- Local Bodies will provide assistance to the District Government for setting up and management of relief camps/ operations.
- Administrators Local Bodies are responsible for provision & restoration of water and sanitation facilities in their jurisdictions besides disposal of waste or rain water/sewerage.
- Local Bodies are equipped with trucks, water bowsers, tractors, dewatering sets, bulldozers, loaders and dump trucks. All of these equipment are utilized to restore proper sanitary facilities, ensure the delivery of clean water and remove debris or excess water.
- Local Bodies sanitary workers can be employed for cleaning relief camps, or other such areas which has been affected by any disaster.
- Local Bodies employ de-watering sets to remove excess water. All Administrators Local Bodies are required to ensure the maintenance of all dewatering sets prior to the monsoon season. The

Administrators Local Bodies maintains a list of all the choking points where rainy water accumulates as a result of heavy storms which can cause urban flooding.

- Administrators of Local Bodies should ensure supply of clean drinking in overhead reservoirs and ensure supply to the affected areas or relief camps through water bowsers. Clean drinking water is a major issue and requirement during any disaster.
- In case of any disaster that requires people to be relocated, the Administrators Local Bodies will assist in the migration of the affected people.
- During the relief effort and subsequent rehabilitation effort , the local Municipalities manpower can be effectively used for the distribution of food and essential commodities among evacuated people or any other relief activity such as provision of cash compensation.

District Disaster Management Authority (DDMA)

- DDMA's are created under the NDM Act 2010 under Chapter IV Section 18 and the law defines their composition and also outlines their functions, duties and powers.
- District Disaster Management Authorities are the first line of defense and the implementing arm of the government policy and plans. Within the district there are three to four key players/departments that have to put up a joint and coordinated effort in order to fight with and handle any disaster under the leadership and coordination of the DC. The office of the DC fully supported by the DPO and line departments such as Health, Agriculture, Livestock, Civil Defence, 1122, Local Bodies and the Revenue Department form the main disaster management team within any given district. This plan is an effort to highlight their sets of responsibilities followed by the role of provincial departments.
- All district administrations had prepared a detailed contingency plan to face any disaster or hazard specially floods which until recently have become an annual affair for some districts.
- The district administration will divide the area as per district division with the Assistant Commissioner as in charge of his her tehsil. All disaster related activities in a said tehsil will be coordinated through the concerned AC.
- On receipt of a flood warning, immediate warning will be conveyed to all the concerned officers. Immediate action will be taken in each sector / sub sector for evacuation of the population from risk prone areas to safer places or to Relief Camps, Assistant Commissioner will ensure that announcements are made through loudspeakers of the mosques utilizing the services of the Revenue department. Each Patwari will inform the Numbardar, Headmaster of the School and Imam Masjid to make announcements etc.
- The tactical operations would be headed by the Additional Deputy Commissioner (Rev). The ADC(R) would be responsible for coordinating and supervising the disaster control and relief measures in the district.
- Provincial government was notified the following composition of DDMA's for whole of the province but the notification for new committee has not been received:
 - i. **Deputy Commissioner (Chairperson)**
 - ii. District Police Officer
 - iii. Additional Deputy Commissioner (Rev)
 - iv. Two Elected Representatives to be nominated by the Chair
 - v. Representative of Pak Army
 - vi. Two Representatives of NGOs/Civil Society to be nominated by the Chair
 - vii. Additional Deputy Commissioner (Gen)
 - viii. Additional Deputy Commissioner (Finance)
 - ix. Executive Engineer (Highway)

- x. Executive Engineer (Building)
- xi. Chief Executive Officer (Health)
- xii. Chief Executive Officer (Education)
- xiii. Deputy Director (Social Welfare)
- xiv. SP Special Branch
- xv. XEN Irrigation / Public Health
- xvi. District officer Civil Defense
- xvii. Chairman Municipalities
- xviii. All Chief Officers of MCs in the District
- xix. District Emergency Officer, Rescue 1122 (Secretary)
- xx. Representative of Red Crescent
- xxi. Such other District level Officers to be appointed by District Government

- District Governments must establish a Disaster / Flood control room at the DC's office, the numbers of which will be circulated to all concerned. The Disaster / Flood Control Room has to maintain updated information regarding the threat of disaster and statistics post disaster. The center will maintain a regular communication with the Flood Forecasting Division or the dam authorities up stream in case of a flood.
- The District Government would immediately mobilize the equipment needed to tackle the challenges created by a disaster. The District Governments will provide a comprehensive list of flood fighting equipment to PDMA as part of their flood contingency plans.
- Chief Executive Officer (Health) will ensure the availability of adequate medicines for treatment of common issues, particularly for snake and dog bite cases and general vaccines at each relief camp.
- Deputy Director Agriculture (Extension) and Additional Director Livestock would arrange fodder and feed supplement for livestock and animals displaced.
- District Regional Transport Authorities (DRTA) in all 36 districts of Punjab are managed by Secretaries who would coordinate with local transporters to arrange for arranging transport required for evacuation of people from affected areas. In case of shortfall in transport in a particular district, the adjoining district would mobilize the transporters in his district to assist with the evacuation of people.

Role of Rescue 1122 in districts during disaster

- The immediate evacuation of people from the disaster prone and vulnerable areas.
- Provision of immediate medical aid during any emergency and at the same time transporting the injured or sick to the nearby hospital through their team of ambulances.
- In flood situations rescuing people from drowning in the strong currents is a specialty of 1122 as it has its own set of divers and boats. Similarly in case of collapsed buildings or structures the 1122 is equipped with heavy machinery to cut through heavy debris.
- Apart from that responsible deployment of fire fighters, cordoning of hazardous areas, provision of first aid and medical treatment, immediate search and rescue of victims and management of the pre-hospital emergency system.
- Rescue 1122 is well trained in setting up medical camps for provision of emergency medical treatment. These camps are setup by Rescue 1122's doctors and paramedic staff.

Pre-disaster Check list for DDMA

- Meeting of DDMA held
- Identification of vulnerable areas
- Identification of Safe places
- Preparation of contingency plan

- Bunds and encroachments visited
- Sites identified for relief camps Evacuation routes/plan
- Safe custody of Government records and essential equipment and their shifting to safer areas on receipt of flood warning
- Enlistment of department wise available resources
- Preparation of list of required relief goods/ items
- Involvement of Volunteers, NGOs and other CSOs
- Designation of Focal Person
- Preparation of District vulnerability map with varying degrees of floods
- Evacuation well in time from vulnerable areas
- Establishment of Camps – All services under one roof
- Flood warning and weather forecast: Loudspeakers announcements
- Establishment of control rooms
- Cancellation of all type of leaves of all employees Designation of Focal Persons
- Assignment of duties and responsibilities of all officers for flood emergency
- Preparation of Telephone Directories with the cell numbers of all the members of DDMA's and volunteers
- No leave during flood days; No official will leave station

Disaster Emergency Control Room (functions and responsibilities)

A Disaster Emergency Control Room working around the clock during the emergency will be established in the IT Lab of the Deputy Commissioner Sheikhupura for effective coordination among the different departments & agencies.

The functions and responsibilities of the Disaster Emergency Control Room is as under

- (i) The control room is the center in terms of disaster management.
- (ii) To monitor, coordinate and implement the actions for disaster management.
- (iii) Periodic check to ensure that all warnings, communication systems and instruments are in working condition.
- (iv) To receive reports on the preparedness of the district level departments and the resources at their disposal to arrange and meet their requirements.
- (v) To maintain an inventory of all resources.
- (vi) To give warning signals as per the need of the hour.
- (vii) To collect and transmit information concerning natural calamities and relief at all levels.
- (viii) To make arrangements for dissemination of information to all vulnerable places.
- (ix) To brief the media of the situations and furnish the day-to-day reports to the State Disaster Management Committee during disasters.
- (x) To report the ground situation and the action taken by the District Administration accordingly.

Checklist for Control Room:

- Dedicated Staff as per magnitude of the disaster
- Duty roaster of the staff
- 2 Dedicated telephone lines
- Dedicated Fax
- Wireless
- Internet and Email or any other source of communication
- Power backup

Checklist for Relief Camp Incharge:

- List of staff displayed with name and department teams will work in shifts
- Presence of representatives of all service providers i.e. Health, livestock, Rescue 1122, Civil Defence etc.
- No movement without the permission of Centre Incharge
- Each shift in-charge to contact District Control Room on arrival and then on departure
- In-charge will keep close liaison with SHO of the respective area
- No of affectees in camp (sick, aged and children) shall be communicated daily
- Availability of at least one emergency vehicle at center be ensured
- Keep record of private boat owners and their contacts details
- List of Doctors and private hospital in the vicinity
- List and contact of philanthropists in the vicinity
- Keeping record of donations coming directly to Centre and report the same to Tehsil and District Incharge.
- Centre Incharge shall ensure vaccination of animals and humans against Communicable diseases
- List of missing persons must be displayed at all Relief Camps

Role of Health Department

The public sector health delivery system comprises of four tiers and as such will continue to provide services at these four tiers during and after any disaster:

Outreach and Community Based Activities, which focus on immunization, sanitation, malaria control, maternal and child health, and family planning. Primary care facilities include BHUs, RHCs. THQs and DHQs provide inpatient and outpatient care. Tertiary care hospitals located in the major cities for more specialized care.

In case of any disaster or calamity the health department will ensure that the following measures are in place;

- To provide first aid to the injured people and arrange evacuation of patients for further assistance.
- Medical camps and mobile health teams should be arranged for prevention and control of communicable diseases, immunization and provision of essential drugs.
- Health department would make a roster of all medical officers and paramedics that would be deployed to these camps and teams.
- Drugs and other medical equipment should be available at all these camps and with mobile teams. The medicine should be for relevant flood related issues, **particularly Anti-snake venom, Anti-rabies.**
- The shelters or relief camps established by the district administration should have medical centers with ambulances and special facilities for women and children.
- An emergency control room will be established in the office of Directorate General Health Services and a representative of this emergency control room would be designated to PDMA's control room.
- A list of essential medicines would be prepared by the Health department and it would ensure that medicines and other resources are present in sufficient stocks in hospitals in disaster hit areas.
- Medical colleges may be involved to create Emergency Response teams
- Health department would also coordinate with international organizations such as WHO and UNICEF.
- Extensive disease surveillances in the disaster hit areas should be carried out warnings if needed be issued through the Disease Early Warning System.
- Medical teams and paramedic staff should be mobilized and deployed for rapid assessment and quick response in the affected areas.

- A contingency plan will be prepared and submitted regarding preparedness for any disaster or calamity.
- The National Disaster Management Authority has designated WHO as the key organization that will fill the gaps in the supply of medicines, rapid diagnostic kits, and vaccinations etc.
- The department would employ female health workers in emergency areas specially, for spreading awareness regarding health risks in a disaster and for any vaccination or immunization programme that may be needed during any emergency.
- A Health and Nutrition Cluster for overall management and oversight of Health department's disaster response would be formed at the Directorate General Health office.
- In case the medicine stocks or even the infrastructure is damaged due to floods, the department would draw up a plan for early recovery of health infrastructure and service delivery.

Civil-Military Coordination Mechanism

The Pakistan army's resources are employed for immediate search, rescue and evacuation. The Army is called in the 'Aid of Civil Power' only when a disaster overwhelms the resources at the disposal of the Government of Punjab. The Deputy Commissioner of the affected district would request the relevant Army Authorities for aid of Army upon the approval of the Home Department. The Standard Operating Procedure of requesting the support of the Army is to route the DC's request through Home Department, and the Ministry of Defense.

The Army plays a substantial role in the opening of breaching sections. The Irrigation department is responsible for the maintenance of manageable discharge rates in the major rivers of Punjab. If the water flow exceeds a set discharge rate, the breaching section is opened with the help of explosives and excessive water is diverted into a designated area.

Volunteer Network

E.g. how many registered volunteers, how to activate them, who will coordinate with them etc.

The office of Civil Defence assists in the evacuation of people and their household properties from the disaster affected areas. The office engages a large number of volunteers for search, rescue, evacuation and disbursement of relief goods. These volunteers generally known as "Razakars" are usually trained in swimming, basic rescue techniques, first aid etc. Razakars build their skills in simulation and mock exercises. The Civil Defence collaborates with Punjab Emergency Services (Rescue 1122) in sophisticated search, rescue and evacuation operations.

The District officer organizes mobile squads of Razakars and scouts in collaboration with local wardens and scout organizations to assist local administration/army, Rescue 1122 in evacuation and other disaster response activities. Razakars manage and utilize generators, search lights, and other life saving equipment. Razakars that know how to swim and dive are utilized for specialized water rescue. Razakars provide first aid to injured victims before transporting them to hospitals. These volunteers also assist the fire brigade in rescue, and Health department's representatives in the treatment of injured victims. The Civil Defence also assists the District Administration and Police in setting up information system for members of public, whose relatives, friends and family members are missing

Detail is as under:-

1. Registered Volounteers	: 300
2. Activated Volunteers	: 150
2. Coordinated with the Deptt.	: 300

RISK ANALYSIS

1. Potential hazards of the district

Hazards	Likelihood (Score 1-5)	Impact (Score 1-5)	Risk
Floods	2	4	8
Urban Flooding	2	1	2
Flash Floods	2	4	8
Hill Torrent			
Glacial Lake Outburst Flood (GLOF)			
Landslide			
Tornado			
Earthquake			
Drought			
Epidemic (COVID-19)	3	3	3
Fire Incidents	3	3	9
Other Major Accidents (Building Collapse, road traffic accidents, train accident, Stampede, plane crash)	3	3	9
Environmental Hazards (industrial accidents, severe pollution etc.)	2	3	6

Risk = Impact x Likelihood

Low : 1-7

Medium : 8-14

High : 15-25

2. Hazards

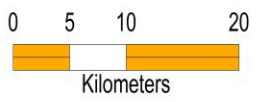
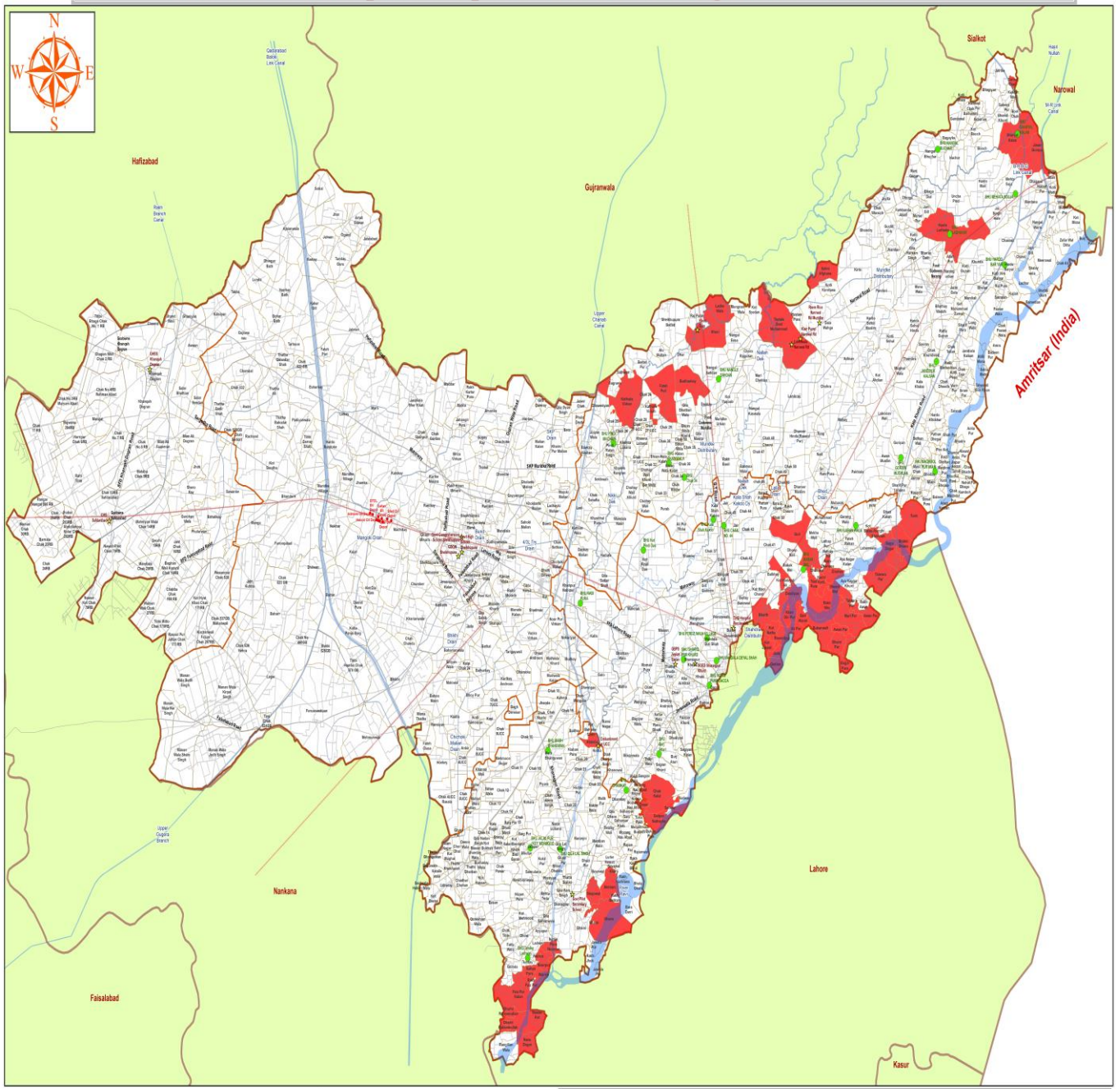
- *Disasters occurred over the past two to three decades and their impact on communities and development sectors*
- *Provide a brief description of the hazards being planned for (medium and high risks), including potential location that could be affected;*
- *Briefly outline the triggers*
- Sheikhupura District had experienced worst flood during the year 1959. Drains in the area over flew and floodwater entered into Sheikhupura City causing devastation. Other high floods had been faced during 1973 and 1976, damaging the crops badly and human settlements. In 1988, exceptionally high flood in the River Ravi threatened the life and property of inhabitants of Sheikhupura District, especially Tehsil Ferozewala. During 1997, the area received heavy downpour to the extent of 283mm within 48 hours in the last week of August, created havoc in the entire District due to newly constructed Motorway, which erupted the natural flood plain, causing heading up of the surface run off and inundated vast area and was alarmed to human life. Accumulative surface run off found its way through the drains, which had lost their carrying capacity due to deferred maintenance for the last couple of years.
- In year 2013, 40711 Cs discharge was recorded on 15-8-2013. This flood water inundated vast areas of Tehsil Muridke and Ferozewala along with the Nullah results in damages of the properties, infrastructure and social life badly. This situation has to face due to inadequate capacity of the Nullah Deg to accommodate such exceptional high floods.
- During September, 2014 Sheikhupura district witnessed one of the most extensive floods in its recent history. This was mainly caused by heavy rains in the catchment area / excessive water flow in drains passing through it particularly Deg Nullah, SKP Drain, Bhed Nullah, Laila Drain etc. These hit large parts of Muridke & Ferozewala Tehsils.
- **Deg Nullh Surrounding vulnerable Villages Detail:-**
Following villages are surrounding near the deg Nulla.
Tapailya dost Muhammad, Chora Rajputan, Marri, Nangal kasowala, Bhamnawala, Ithad Chemical, Shamkay, Kallar, Misson Kallar, Mandiyali, Bhattian wala, Kot Pindi Das, Hadyala, Kalla, and Khan Pur Nabi Pur.
- **Nikki Deg Nullah Surrounding vulnerable Villages Detail:-**
Ladaky Virkan, Khorri, Raj pura, Dahar, Sheikhupura bedad, Fateh Puri, Khatyla virka, Khana libana, Khana Rangra, Sikham, Khushal Pura, Wandal Nasir, Dhau Ki malliya, Khan pur, Nokrian, and Ghalow.
- **Bhed Nulla Surrounding vulnerable Villages Detail:-**
Hardo laday kay, Burray oth, Pandori, Allah pur Syeddan, Qila Harnam Singh, Kotli sahuel, Rakh Ahdian, Natt, Darorh Muslim, Kot Abdul Malik, Momin Pura, and Bhansi Nagar.
- **Laila Nulla Surrounding vulnerable Villages Detail:-**
Mahay, Darorr Hindh, Chak no 49, Ratan Pura, Jeer, Rana Town, Gulfishan Town.

Triggers Factors:-

1. Due to illegal encroachment and construction of the buildings on the water way of Nullah Deg its existing capacity is decreased
2. Flood situation faced due to inadequate capacity of Nullah to accommodate exceptional high flood.
3. Nullah Deg channelized from BRB Canal to Muridke Narowal Road (Typyala Dost Muhammad Bridge) upstream BRBD and downstream of Muridke Narowal up to its out fall where Nullah is not channelized especially this is the point from where the water become rebelliously damage the crops and population in Muridke & Ferozewala

District detail map with vulnerable points, hazards, planned camps, health facilities, warehouses etc.

DISTRICT SHEIKHUPURA MAP FOR DISASTER MANAGEMENT PLAN



Legend			
	Ware Houses		DP Camps
	Oil Depots		Water Bodies
	Vulnerable Health Facilities		Railway Track
	Roads		Revenue Estate Boundary
	Flood Prone Revenue Estates		Tehsil Boundary

Source: District Government IT Section

3. Response & Operational Capacity

Briefly describe the existing response capacities in District (including government and NGO partners)

1. The main capacity of the district for handling any disaster is the Rescue 1122 department which has been declared Punjab Disaster Response Force by the PDMA.
2. There are almost 318 trained Rescuers who can handle drowning emergencies, fire incidents, road traffic accidents, other major incidents and disasters like floods, environmental disaster, building collapse etc.
3. Another main capacity of the district is the police department. The police staff deputed in any disaster is the key element for the evacuation of the victims to the safe places/ relief camps. The police department is also responsible for provision of security to staff of other agencies working in the disaster area.
4. Civil Defense with its volunteers is another strong capacity of the district during the disaster.
5. Health department is responsible for providing first aid facility to victims alongwith the Rescue 1122.
6. Education department provides the buildings of schools situated in the disaster areas for relief camps.
7. Irrigation department with its heavy machinery & equipment provides the service of strengthening of embankments, construction of usable routs within flooded areas and it continuously keeps any eye on the water level in rivers and canals.
8. Revenue department with other government departments look after the provision of food, drinking water etc to the victims and for the assessment of damages resulted by the disaster to the disaster prone areas.

Total NGOs working in the District: 44

4. Strategic Reserves

Items	Available	Functional	Non-Functional	Extra Demand
Boats	21	21	0	0
OBM	19	19	0	0
De-watering sets	99	89	10	0
Navigators	0	0	0	0
GIS devices	0	0	0	0
Life Jackets	180	160	20	50 (adult)
Life Ring	78	78	0	0
Life Lines	0	0	0	0
Scuba diving suit with complete accessories	2	2	0	0
First Aid Kits	79	50	29	30
Rescue Bag	3	3	0	0
Safety Harnesses	6	6	0	0
Ambulances	22	22	0	0
Fire Brigade	8	8	0	0
Water Tanks / Bouzers	15	15	0	0
Extendable Ladders	0	0	0	0
Hydraulic Cutter	2	2	0	2
Sonar Rader	0	0	0	0
Jumping Sheet	1	1	0	20
Dumpers	0	0	0	0
Excavators	0	0	0	0
Cranes	0	0	0	0
Bulldozer	7	7	0	0
Boat Carrier/Trolleys	4	3	1	0
Pickups/Jeeps/4x4 vehicles/Mini Trucks	3	3	0	0
Searchlight	0	0	0	50
Tent	80	50	30	0
Mosquito Net	0	0	0	0
Plastic Mat	10	10	0	10
Blanket	100	100	0	0
Any other main relief/rescue equipment	4	4	0	0
Generator Sets	3	3	0	7
Gas-Cutters	0	0	0	0
Sonar Radars	0	0	0	0
Scuba Diving Set	6	6	0	0
Navigator/GPS Tracker	0	0	0	0
Floating Rope	0	0	0	0

5.Gaps and Constraints

- *Briefly outline the capacity gaps in the provision of rescue and response;*
- *Describe major obstacles to providing humanitarian assistance (security, access constraints, administrative obstacles, logistics, etc.)*
 - ✓ 1- Insecurity of workers working during disaster.
 - ✓ 2- Lack of knowledge of other agencies role & responsibilities
 - ✓ 3- Lack of inter agency coordination.
 - ✓ 4- Recognition of different obstacles associated with different locations.
 - ✓ 5- Water rescue operation is allowed in day light only.
 - ✓ 6- Lack of information sharing.

MITIGATION STRATEGY

- ✓ Briefly describe what measure could be taken to reduce the impact of the potential disasters.
- ✓ Strategic pre-positioning of available relief stocks
- ✓ Public education and community awareness

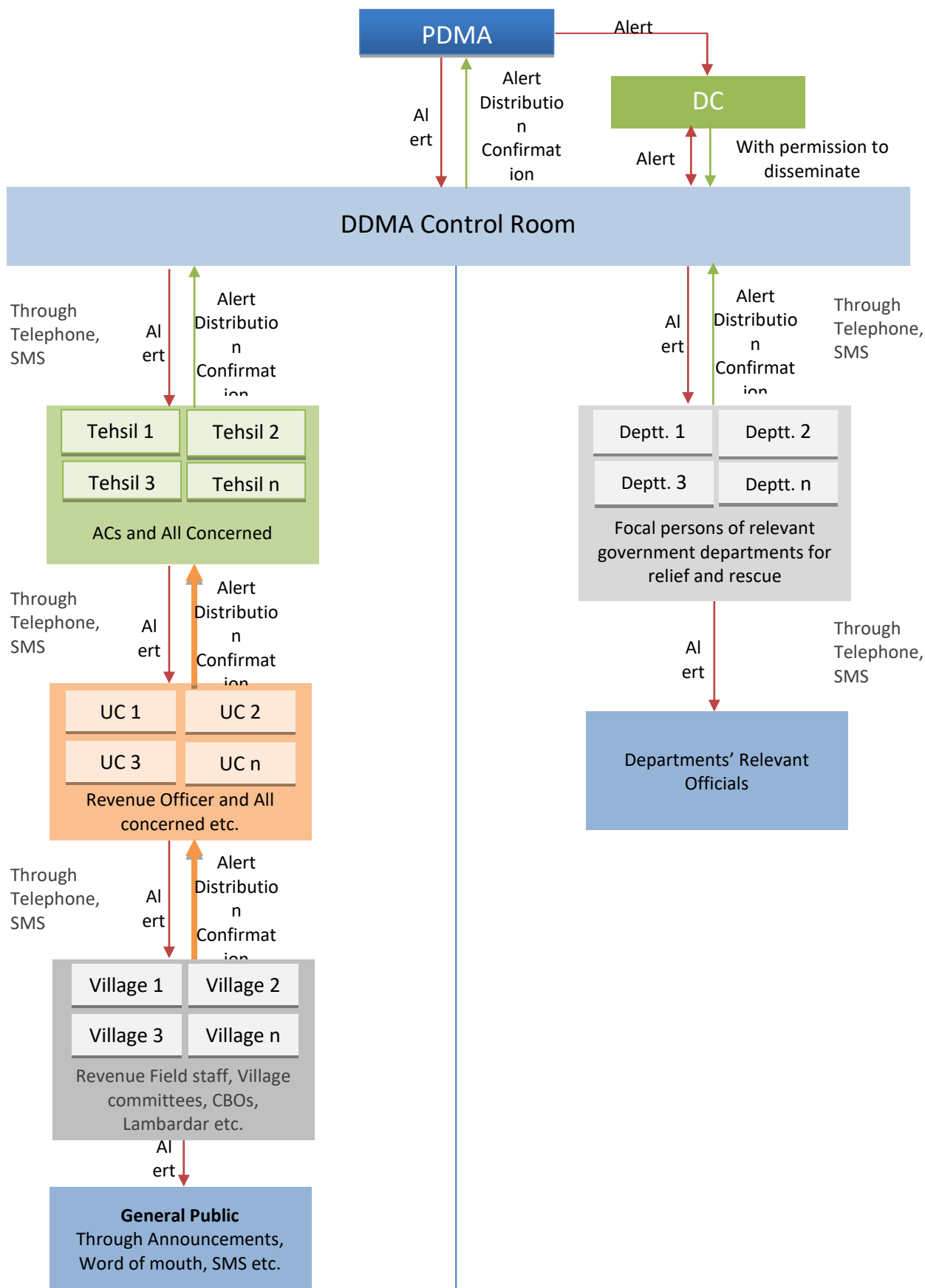
Hazards	Mitigate Actions	Responsible Department
Floods	<ul style="list-style-type: none"> • Strengthening of embankment with stone pitching and repair of embankment where local people cut down the embankment for ways or any other purpose. • An awareness campaign regarding different measures to meet the flood situation details of low lying areas, Flood Forecasting and Warning System, Hazards Map, Detail of Flood Relief Centers/ Evacuation Centers, Evacuation Procedure and other preventive and precautionary measures etc. has been scheduled 	Irrigation District Govt
Urban Flooding	<ul style="list-style-type: none"> • Cleaning of sewerage • Community awareness • A Flood evacuation drill/Mock exercise shall be conducted under the supervision of Deputy Commissioner, Sheikhupura before monsoon season 	District govt Rescue 1122 All Local Bodies
Flash Floods	<ul style="list-style-type: none"> • Construct surrounding bunds around vulnerable areas • Don't allow people to construct their houses at vulnerable areas. • The de-silting of nullahs, canals and rivers. • Diverting water of nulluh and canals. • All Local Bodies, Rescue 1122, Civil Defence, Volunteer Organization, Community and other concerned departments with the help of multimedia presentations and especially designed documentary on Flood Risk Management as prepared by the Task Force on Flood Risk Management 	Irrigation District Govt Rescue 1122 All Local Bodies.
Hill Torrent	Nil	
Glacial Lake Outburst Flood (GLOF)	Nil	
Landslide	Nil	

Tornado	Nil	
Earthquake	<ul style="list-style-type: none"> • Assesment of dangerous buildings • Constructing earthquick resistance buildings 	Executive Engineer (Building) and other concerned departments
Drought	Nil	
Epidemic	<ul style="list-style-type: none"> • Awareness regarding personal and environmental hygiene during Covid-19 • Quick approach to the health facilities for rapid response and treatment of the diseases accordingly. • Relevant medical camps in the prone areas. 	District Administrations and Health Department
Fire Incidents	<ul style="list-style-type: none"> • Survey of vulnerable buildings • Survey of vulnerable factories • Implementation of building codes. • Training of employeeed staff. • Community awarenness • Handling of Proper disposal material 	Civil defesnce & building department labour department All Local Bodies Environment
Other Major Accidents (Building Collapse, road traffic accidents, train accident, Stampede, plane crash)	<ul style="list-style-type: none"> • Identification & removal of black spots • Community awarenness • Implementation of traffic rules • Permanent Resetelment of vulnerable area 	Civil Defence Traffic police District Govt Rescue 1122

<p>Environmental Hazards (industrial accidents, severe pollution etc.)</p>	<ul style="list-style-type: none"> • Implementation of laws regarding usage of toxic gases. • Training of employed staff. • Community awareness • Survey of vulnerable buildings • Survey of vulnerable factories • Handling of Proper disposal material • Evacuation Drills • Evacuation Routes & Maps • Proper Working Systems and Machines - regularly Checked • Trees nearby - Provide Oxygen , Less Pollution 	<p>Labour Environment Industry Civil Defence All Local Bodies Rescue 1122</p>

EARLY WARNING

Information Flow Diagram



Alertness Levels

Following four levels alertness have been established:

<p>Level-D (Disaster threat is perceptible)</p>	<p>DDMA shall conduct monthly meetings besides atleast 2 mock exercises as per DDMP, well in time, to make the concerned officers/officials understand their role and responsibility for better coordination and testing of rescue and relief equipment. DDMA shall also ensure the physical presence of concerned staff deputed and availability of equipment/resources for all designated vulnerable sites within given time frame during disaster. Vulnerable site's inspections and necessary works/action shall be carried out as mitigation measures.</p>
<p>Level-C (Alert) (Warning issued but likelihood of occurrence is less than 100%)</p>	<p>Activities to be undertaken in level D DDMA shall issue "alert" to all concerned for the vulnerable area. DDMA and LDMA (tehsil level) control rooms be made operational 24/7 and ensure availability of all required (available and additional) resources for on call mobilization and monitor the situation 6 hourly. Only DC and DPO shall grant leave according to the situation.</p>
<p>Level-B (High Alert) (Disaster threat is imminent)</p>	<p>Activities to be undertaken in level C DDMA shall issue EW to all stakeholders and "High Alert" for the district to ensure that all additional HR and material resources including volunteers has reported to their assigned duties, and all resources for evacuation and disaster management have been mobilized as per DDMP. All emergency (health, fire, rescue 1122, MCs etc) facilities shall work 24/7 with full staff strength. DDMA shall monitor the situation on hourly basis.</p>
<p>Level-A (Red Alert) (Disaster is materialized)</p>	<p>Activities to be undertaken in level B + DDMA shall respond to the emergency immediately and shall carry out rescue and relief operation as defined in DDMP and shall continuously monitor the situation. Resources of adjoining districts shall be mobilized and Army may be called keeping in view the magnitude of the disaster.</p>

Early Warning

Briefly describe how the early warning will be received from provincial level?

Who is the focal person at district level?

Functions of District/Tehsil Emergency Control Rooms in early warning

How the early warning will be communicated to relevant departments for different disasters? What actions each relevant department should take after receiving the early warning e.g. evacuation.

How the early warning will be communicated to the relevant population? E.g. through Patwaris, SMS, Announcements, Media etc.

The information received at District control room is dispatched to the concerned department (focal person / district head) through email, sms or phone call depending upon the severity of the warning after getting clearance from chairman DDMA. The information to the relevant department is communication into three phases:

Level I

Notices are served through patwari and gardawar to the concerned vulnerable area regarding alternate arrangements for expensive in case of emergency evacuation.

Level II

Mock exercises and drills are conducted through relevant departments regarding evacuation.

Level III

In this phase the warnings are issued through sirens, announcements through loud speaker, mega phone and electronic media when DDMA issues high alert.

RESCUE STRATEGY

- *What actions will be taken as an immediate response to the situation? E.g. Evacuation, medical assistance*
- *Who does what and when? Responsible departments/agencies*
- *How and when Pakistan Army will be requested to support the rescue activities*
- *Camp sites identified? List at Annex I.*

The entire Machinery, Equipment, and staff of the District Administration shall be immediately mobilized the affected area. All allied departments will jointly handle the situation. If the high magnitude of the disaster occurred then neighboring district resources would be called to tackle the situation. In the high magnitude disaster Deputy Commissioner will also request to army for support in Rescue and relief operation.

Evacuation:

Emergency evacuation is the rapid removal of people from a threatened environment to a safer place. Punjab Emergency Services and Civil Defense, along with the implementing arms of the Home department are primarily responsible for evacuation of the affected people. Their key personnel should be trained in various evacuation techniques for the different types of disasters. The transportation plan for evacuation would be formulated in close consultation with Punjab Emergency Services, Punjab Police, the Construction & Works department and the Transport department. The department of Civil Defense along with the Education department would mobilize groups of Raskars and Scouts to assist the evacuation process. Evacuation is prioritized on a need basis. The first to be evacuated are seriously injured or bedridden patients followed by handicapped or disabled persons, pregnant women, elderly persons, children and women. The rapid evacuation of injured persons by the concerned agencies has to follow a simple color tagging process that prioritizes the patients that are in most urgent need of medical assistance. Evacuation would be coordinated by the PDMA & would be ordered DC considering the on-ground scenario. Forced evacuation can also be ordered by the DC in the face of clear and present danger.

Guidelines for Efficient Evacuation

Search & Rescue are the foremost activities of the evacuation process. Most of the resources would be dedicated to these activities during the initial 12 hours after the disaster. Alongside, relief camps would be set up in safe areas that are easily accessible from all sides. The locations of relief camps in districts have been duly indicated in the flood contingency plans issued by the District Governments. These camp sites would be equipped with proper medical, water and sanitation facilities by the District Governments. Evacuation routes to the identified camps would be rapidly planned and informed to the personnel undertaking the search and rescue operations. All efforts would also be made to engage Government and private transport vehicles for the evacuation of victims along these identified routes. The staff of Punjab Emergency Services is well trained in carrying out timely and effectively coordinated operations to locate and rescue persons in distress and deliver them to a place of safety. Any harm to a rescuer should be averted as he/she is the most important person in a rescue attempt.

Families would preferably be evacuated together as one unit, minimizing chances of separation in a family. Evacuation of children without families would only be undertaken as a last resort and with the ultimate goal of earliest reunification. The best interest of the child would be considered while making the decision to evacuate. **Medical Assistance:**

The victims of a disaster would most probably require immediate medical assistance due to injury, psychological trauma or general health problems such as diarrhea, cholera, high fever, flu, cough, eyes infection etc. Mobile clinics would immediately be setup in the affected areas. These clinics would be equipped with both clinical and human resource to enable them to cater to medical needs of a large number of victims. The Health Department would be the lead agencies in this regard. However, the assistance of NGOs would also be solicited. The clinics and hospitals in the vicinity of the affected area would maintain a record of all patients to be able to identify any epidemic outbreaks that would further increase the spread of disease. The Social Welfare department would take all measures to rehabilitate orphans, destitute women and other vulnerable elements of the affected population.

Pakistan Army:

The Pakistan Army's resources are employed for immediate search, rescue and evacuation. The Army is called in the 'Aid of Civil Power' only when a disaster overwhelms the resources at the disposal of the District Government. Search, rescue and evacuation are the primary responsibilities of the 'Disaster Response Force' so if the resources of this force fall short, the Army is immediately called in.

HUMANITARIAN ASSISTANCE

- *How damage and losses data will be collected and communicated to higher level?*
 - *How the priority needs (e.g. food, shelter, health etc.) will be determined?*
 - *What activities will be carried-out to provide assistance to the affected population and by whom?*
 - *What assistance will be provided?*
 - *Standardization of different packages/kits e.g. food, tents*
 - *Humanitarian Assistance monitoring mechanism – to avoid duplication and identify gaps*
 - *Minimum standards for camps, if camps are established*
 - *What is the current capacity in the district? Enough for how much caseload?*
 - *Explain how protection, gender and age, environment and other relevant cross-cutting issues that will be addressed or mainstreamed into the humanitarian assistance strategy*
-
- All departments will report about damage of the disaster related to their respective department to the District Disaster Control Room. The district control room in the supervision of System Network Administrator will prepare the damage assessment reports and will submit to the Deputy Commissioner office.
 - Keeping in view the livelihood of natives in the disaster area the priority based need assessment will be determined by the Revenue department.
 - Disaster Response Force, Rescue 1122 will provide medical first aid to the victims of the disaster with the collaboration of Health department. The evacuation of victims from disaster areas to the relief camps established by the Revenue and Education departments, will be the responsibility of Rescue 1122 and Police department. Pak army will be called for rescue & relief assistance by the Deputy Commissioner if required.
 - Assistance regarding livelihood of victims, construction/ repair of damaged houses, medical advice, cattle handling will be provided by the concerned departments as required.
 - Relief packages will be standardized according to the gender and age wise needs of the victims. Liquid diet for infants, soft diet for aged people and necessary supplements for pregnant females and ailed persons will be provided. Tent packages will comprise necessary household items e.g. mats, blankets, mosquito nets, necessary crockery (bucket cooking pans) etc.
 - Social welfare department will depute different NGOs in specific disasterous areas for provision of humanitarian assistance. Each NGO will work in its allocated areas and will not touch the areas assigned to other NGO or working group to avoid any duplication in the collected data.
 - If relief camps are established, the residents will be provided with drinking water and food in sufficient amount, mobile toilets. Mobile health centers and basic schools for displaced children will also be established within the camps.
 - The current capacity of manpower, equipment, rescue machinery, boats, provision of food and life saving drugs is not up to the mark.

ANNEX I: IDENTIFIED SITES FOR DISPLACED PERSONS

S#	Location	No. of persons which can be accommodated	GPS Coordinates	S#	Location	No. of persons which can be accommodated	GPS Coordinates
1	Govt High School Sheikhupura	2000	X: 73.975665 Y:31.710396	16	Fateh PuriSKP Road Muridke	200	X: 74.20 Y:31.82
2	Govt. Comprehensive School	1500	X: 73.975788 Y:31.720367	17	Govt. Pilot Secondary School	2000	X: 74-6-15.4 Y: 31-28-10
3	Govt Degree collge for women Sheikhupura	2000	X: 73.971572 Y:31.707690	18	Govt. Girls High School	150	X: 74-1-36.7 Y: 31-24-5.3
4	THQ Sheikh Hospital Ferozewala	1000	X: 74.285133 Y:31.658927	19	Embankment at upper Chanab Canal Tentage	500	X:74-7-53.1 Y:31-34-29
5	Govt. Middle School for Girls Ferozewala	200	X: 74.279368 Y:31.653841	20	Govt. H.S for boys Safdarabad	500	X: 73.57 Y:31.72
6	Govt. Girls School, Murad Town St#7	250	X: 74.272028 Y:31.677143	21	Govt. GHSS Khanqah Dogran	500	X: 73.61 Y:31.83
7	Govt. Girls Elementary School, Sharapur Khurd	500	X: 74.242191 Y:31.633583	22			
8	BHU Jamal Town Sharaqpur Khurd	300	X: 74.228684 Y:31.636480	23			
9	Govt. Boys Primary School Jhugian Sialan	250	X: 74.219457 Y:31.633081	24			
10	Reem Rice Narowal Road Muridke	200	y: 31.87 x: 74.38	25			X: Y:
11	Klair Pump Narowal Road	200	y: 31.86 x: 74.36	26			
12	Lohrawala Narowal Road Muridke	200	y: 31.86 x: 74.35	27			
13	Noorpura	200	y: 31.86	28			

	Narowal Road Muridke		x: 74.35				
14	Baway Wala G.T Road Muridke	200	y: 31.86 x: 74.35	29			
15	Khori Stop G.T Road Muridke	200	y: 31.87 x: 74.24	30			

ANNEX II: LIST OF HAZARD PRONE VILLAGES/REVENUE ESTATE (NAMES REQUIRED)

Hazards	Tehsils	Names of Revenue Estates	Names of Villages
Floods	1. Sharaqpur	Mehtam	Mehtam
		Dhana	Dhana
		Sehjowal	Sehjowal
		Noorpur	Noorpur
		Sultanpur	Sultanpur
		Garhi Rahimullah	Garhi Rahimullah
		Faizpur Kalan	Faizpur Kalan
		Vains	Vains
		Thatha Bamian	Thatha Bamian
		Abdalia	Abdalia
		Nano Dogar	Nano Dogar
		Nawan Kot	Nawan Kot
		2. Muridke	Gharyal Kalan
	Surmay Dani		Surmay Dani
	Jewan Gorya		Jewan Gorya
	Tipiala Dost Muhammad		Deera Noor Pur
	Tipiala Dost Muhammad		Deera Islambad
	Tipiala Dost Muhammad		Sehni Afghna
	Sehni Afghna		Chak Rajpootan
	Tipiala Dost Muhammad		Deera Ba way wala
	Tipiala Dost Muhammad		Herdo Ladhke
	Tipiala Dost Muhammad		Khori
	Tipiala Dost Muhammad		Bhuddankey
	Herdo Ladhke		Ladhaywala Virkan
	Khori		Fatehpuri
	Buddankey		Khatiala Virkan
	Ladhaywala Virkan		
	Fatehpuri		
	Khatiala Virkan		
	Ferozewala		
			Bheikhi Dana
			Talwar Par
			Awan Par
			Bhani Par
			Gujar Pura
			Marl Par
		Rakh Donoya	

			<p>Goel Yaar Pura Dandian Bukanwal Bharath Kot Nathu Kot Barlas Kot Jaspat Jada Rasool Pur Ali Pur Qadian Kachi Kotli Chohan Qazi Marali Ratni Wal Shedi Wal Jhangi Sheikhan Gago Dogar Khair Din Pur Saad Par Natheyka Dosair Chak Kalal</p>
Urban Flooding			<ul style="list-style-type: none"> • Tehsil Ferozewala (Haider Road, Rachna Town, Pathan Colony, Gulfashan Town) • Tehsil Sheikhupura, Safdarabad, Sharaqapur (Nil) • Tehsil Muridke
Flash Floods			<ul style="list-style-type: none"> • Tehsil Muridke (Gharyal Kalan) • Surmay Dani • Jewan Gorya • Deera Noor Pur • Deera Islambad • Sehni Afghna • Chak Rajpootan • Deera Ba way wala • Herdo Ladhke • Khori • Bhuddankey • Ladhaywala Virkan • Fatehpuri • Khatiala Virkan) • Tehsil Ferozewala (Haider Road, Rachna Town,

			Pathan Colony, Gulfashan Town)
Hill Torrent			
Tornado			
Earthquake			
Drought			
Epidemic			
Environmental Hazards (industrial accidents, severe pollution etc.)			

ANNEX III: LIST OF HEALTH FACILITIES AND THEIR VULNERABILITY TO HAZARDS

S#	Name and Location	GPS Coordinates	Health Facility Type (Primary, Secondary, Tertiary)	Name and Contact No of Focal Person	Hazard Vulnerability (Floods, Earthquake etc.)
1	Lubanwala	X: 31.716 Y:73.984	BHU Lubanwala	Dr. Farrukahh Javed (0334-4565652)	Flood
2	Barth	X: 31.71679 Y:73.98495	BHU Babakwal	Dr. Sehar Sarwar (0334-9765652)	Flood
3	Burj Attari	X: 31.573 Y:74.195	BHU Burj Attari	Dr. Fakher Un Nisa (0324-2323531)	Flood
4	Faizpur Khurd	X: 31.590 Y:74.217	BHU Nizampur Daccar	Dr. Shamsa Malik (0332-6325505)	Flood
5	Ferozewala Village	X: 31.661 Y:74.273	BHU Ferozewala	Dr. Tayyba Rashid (0332-6290616)	Flood
6	Gharyal Kalan	X: 32.013 Y:74.604	BHU Gharyal Kalan	Dr. Muhammad Basit (0343-6768474)	Flood
7	Mehta Suja	X: 31.967 Y:74.600	BHU Mehta Suja	Dr. Ali Raza (0307-6110166)	Flood
8	Merowal	X: 31.716 Y:73.984	BHU Hardo Baryar	Dr. Shahbaz Ali (0333-4643363)	Flood
9	Kala Khatai	X: 31.825 Y:74.501	BHU Ghorian Mughlan	Dr. Aroosa Tahir (0332-4366422)	Flood
10	Jandiala Kalsan	X: 31.850 Y:74.516	BHU Jandiala Kalsan	Dr. Syeda Fatima Nisar (0321-4334124)	Flood
11	Nangal Sadhan	X: 31.716 Y:73.984	BHU Nangal Sadhan	Dr. Tanveer Shabir (0301-4743523)	Flood
12	Ladhkey	X: 31.716 Y:73.984	BHU Ladakey	Dr. Usman Munir (0343-4059291)	Flood
13	Nangal Bucher	X: 32.00 Y:74.519	BHU Nangal Butcher	Dr. Muhammad Atif (0321-4314825)	Flood
14	Dhamkey	X: 31.538 Y:74.158	BHU Dhamkey	Dr. Amber Farid Awan (0308-4726376)	Flood
15	Sehjuwal	X: 31.476 Y:74.124	BHU Qila Lal Singh	Dr. Ali Usman (0331-4404637)	Flood
16	Faiz pur Kalan	X: 31.716 Y:73.984	BHU Tenday Ladhway	Dr. Asim Azam (0321-5141115)	Flood
17	Shamke	X: 31.710 Y:74.231	RHC Kala Shah Kaku	Dr. Fahad Iqbal (0334-6183034)	Flood
18	Kot Pindi Das	X: 31.706 Y:74.181	BHU Kot Pindi Das	Dr. Muzhar Hussain (0332-99859)	Flood
19	Sharaqpur Khurd	X: 31.695 Y:74.002	BHU Sharaqpur	Dr. Saad Maqsood (0313-4260151)	Flood

S#	Name and Location	GPS Coordinates	Health Facility Type (Primary, Secondary, Tertiary)	Name and Contact No of Focal Person	Hazard Vulnerability (Floods, Earthquake etc.)
20	Kot Mehmood	X: 31.450 Y:74.064	BHU Kot Mehmood	Dr. Hafiz Muhammad Umar Khan (0334-7679213)	Flood
21	Chak No. 34	X: 31.764 Y:74.224	BHU Chak 34	Dr. Muhammad Minahil (0331-4324334)	Flood
22	Bhianwala	X: 31.460 Y:73.147	BHU Bhianwala	Dr. Muhammad Usman (0301-8443535)	Flood
23	Wandala Diyal Shah	X: 31.716 Y:73.984	BHU Vandyala Dyal Shah	Dr. Muhammad Adil (0331-4291948)	Flood
24	Khanpur	X: 31.458 Y:74.260	BHU Khanpur	Dr. Arooba Saeed (0321-487405)	Flood
25	Marbhangwan	X: 31.716 Y:73.984	BHU Marh Bhangwan	Dr. Samar Fatima (0332-4497588)	Flood
26		X: Y:			
28		X: Y:			
29		X: Y:			
30		X: Y:			
31		X: Y:			
32		X: Y:			
33		X: Y:			
34		X: Y:			
35		X: Y:			
36		X: Y:			
37		X: Y:			
38		X: Y:			
39		X: Y:			
40		X: Y:			

S#	Name and Location	GPS Coordinates	Health Facility Type (Primary, Secondary, Tertiary)	Name and Contact No of Focal Person	Hazard Vulnerability (Floods, Earthquake etc.)
41		X: Y:			
42		X: Y:			
43		X: Y:			
44		X: Y:			
45		X: Y:			
46		X: Y:			
47		X: Y:			
48		X: Y:			
49		X: Y:			
50		X: Y:			
51		X: Y:			
52		X: Y:			
53		X: Y:			
54		X: Y:			
55		X: Y:			
56		X: Y:			
57		X: Y:			
58		X: Y:			
59		X:			

S#	Name and Location	GPS Coordinates	Health Facility Type (Primary, Secondary, Tertiary)	Name and Contact No of Focal Person	Hazard Vulnerability (Floods, Earthquake etc.)
		Y:			
60		X: Y:			
61		X: Y:			
62		X: Y:			
63		X: Y:			
64		X: Y:			
65		X: Y:			
66		X: Y:			
67		X: Y:			
68		X: Y:			
69		X: Y:			
70		X: Y:			
71		X: Y:			
72		X: Y:			
73		X: Y:			
74		X: Y:			
75		X: Y:			
76		X: Y:			
77		X: Y:			

S#	Name and Location	GPS Coordinates	Health Facility Type (Primary, Secondary, Tertiary)	Name and Contact No of Focal Person	Hazard Vulnerability (Floods, Earthquake etc.)
78		X: Y:			
79		X: Y:			
80		X: Y:			
81		X: Y:			
82		X: Y:			
83		X: Y:			
84		X: Y:			
85		X: Y:			
86		X: Y:			
87		X: Y:			
88		X: Y:			
89		X: Y:			

ANNEX IV: LIST OF VULNERABLE EDUCATIONAL INSTITUTIONS

S#	Name	Institute type (School, College etc.)	GPS Coordinates	Enrolment	Incharge Name	Contact Number
1	GPS Kot Yaqoob	School	X: 74.27 Y:31.81	231	Mustafa Ali	03008124842
2	GPS Tung	School	X: 74.38 Y:31.79	51	Maleeha Ajmal	03338295015
3	GPS Nangal Kasowala	School	X: 74.29 Y:31.81	136	Muhammad Hussain	03014600282
4	GPS Kot Faqir Muhammad	School	X: 74.32 Y:31.81	173	Gulzar Ahmad	03334575306
5	GPS Kot Nazir	School	X: 74.33 Y:31.81	82	Muhammad Ali	03320847638
6	GPS CHak 47	School	X: 74.31 Y:31.77	134	Rana Muhammad Mushtaq	03328031947
7	GPS Chak 48	School	X: 74.31 Y:31.79	49	Rana Sikandar Ali	03009437014
8	GES Chak 49	School	X: 74.33 Y:31.76	275	Mehmboob Hussain	03474865885
9	GES Dharoor Muslim	School	X: 74.38 Y:31.76	180	Azhar Hussain Tahir	03004085765
10	GGPS Amin Shah	School	X: 74.64 Y:31.97	50	Muhammad Rafiq	03008862441 PEF
11	GGPS Marri Khurd	School	X: 74.65 Y:31.90	71	Ishrat Bibi	03454977224 PEF
12	GGPS Jatrike	School	X: 74.58 Y:32.05	72	Nighat Qudsia	03004349567
13	GGPS Surmaydani	School	X: 74.60 Y:32.04	142	Muhammad Sarwar	03456769778
14	GGES Jeeto Gala	School	X: 74.52 Y:31.89	132	Bushra Azam	03014453566
15	GGES Pakhiala	School	X: 74.43 Y:31.76	130	Sajida Yasmin	03364488850
16	GGPS Makku Ana	School	X: Y: 	80	Sadia Ramzan	03127732466

S#	Name	Institute type (School, College etc.)	GPS Coordinates	Enrolment	Incharge Name	Contact Number
17	GGPS Kotli Karotana	School	X: 74.39 Y:31.90	40	Sadaf Yousaf	03319605698 PEF
18	GGES Kot Nazir	School	X: 74.33 Y:31.81	101	Zainab Khatoon	03334260474
19	GGPS Rustam Pura	School	X: 74.36 Y:31.88	41	Tanvir Ch	03214824808
20	GGCMS Marri Chehllan	School	X: 74.30 Y:31.84	163	Shamim Ashraf	03454458296
21	GGHS Bhago Dial	School	X: 74.49 Y: 31.96	351	Farzana Kokab	03328030228
22	GGES Dharor Muslim	School	X: 74.36 Y: 31.76	142	Shamshad Zubair	03004408218
23	GGES Qila Satar Shah	School	X: 74.13 Y:31.69	270	Anam Saleem	03324495024
24	GGES Chohy Wali Kalan	School	X: 74.18 Y:31.74	93	Naheed Akhtar	03066328921
25	GGES Nangal Sadhan	School	X: 74.27 Y:31.83	505	Razia Jabeen	03318454046
26	GGPS Dhaar	School	X: 74.21 Y:31.84	13	Rubina	03044351953 PEF
27	GGPS Khushal Pura	School	X: 74.12 Y:31.73	106	Bushra Perveen	03017433703
28	GGPS Leel	School	X: 73.11 Y:31.74	27	Jaweria Zafar	03344964017 PEF
29	GGPS Chak 48	School	74.317494 31.793413	27	Shaheen khausar	03314078165
30	GGPS Nangal Waris Khan	School	74.632624 31.947725	50	Zaibul Nisa	03348065578
31	GGPS Chak Dheedo	School	74.530015 31.832498	48	Jaweria naseer	03456287574 PEF
32	GGPS Rajpura	School	74.587134 31.903458	67	Shafufta Riasat	03434474584 PEF
33	GGPS Baryar kohna	School	74.603175 31.909194	42	Kubra Bibi	03549699194 PEF
34	GGES Chakrali	School	74.600756 31.934713	200	Shela Rubina	03367406559
35	GGES Meero wal	School	74.613631 31.935859	128	Iqra Idrees	03444384434
36	GES Malik Pur	School	74.647950 31.955408	78	Nasreen Akhtar	03014142788
37	GGPS Dheegana	School	74.633660 31.970023	81	Adnanul haq	03348244956
38	GPS Kajle	School	74.600864	97	Muhammad	03328032006

S#	Name	Institute type (School, College etc.)	GPS Coordinates	Enrolment	Incharge Name	Contact Number
			31.903157		Imran	
39	GPS Rajpura	School	74.587136 31.903181	56	Muhammad Afzal	03436072361
40	GPS Paslanwala	School	74.583260 31.889819	131	Faryad hussain	0301-4456298
41	GPS hardo bauryar	School	74.596172 31.918321	97	Muhammad Ishaq	03424265900 PEF
42	GPS Kot Bhlan	School	74.570951 31.903789	25	Mushtaq Ahamad	03007776490 PEF
43	GPS Mandiali	School	74.556428 31.891925	360	M. Saleem	03024406583
44	GPS Jeongoria No.1	School	74.626847 31.994010	57	Karamat Ali	03344146310PEF
45	GPS No. 2	School	74.626987 31.985970	35	Ejaz Ahmad	03419785421 PEF
46	GPS No. 3	School	74.619825 31.997699	131	Riaz	0303-4498027
47	GPS uncha Pind	School	74.537534 31.959744	280	Nasir Ali	03456362169
48	GPS Dera Arrian	School	74.537057 31.952476	67	Niamat Ali	03007770416
49	GPS Khunda Ladheke	School	74.551822 31.938488	165	Rabia Atiq	03334810134
50	GPS Katibrahim	School	74.548371 31.947943	97	Aslob Khan	03324763794 PEF
51	GPS Jeto Gala	School	74.588000 31.901830	121	M. Azam	03044383657
52	GPS Gharang Wala	School	74.408417 31.736776	96	Hafiz Khaliq ur rehman	03467618588
53	GPS Chak 41	School	74.322079 31.718294	120	M. Shafiq	03064712377
54	GPS Muslim Legue	School	74.340853 31.717908	110	Qasim Hussain	03121488373
55	GPS Ragian Jangian	School	74.234375 31.666249	156	Syed Muzammil Hussain	03004212711
56	GES Dorgi Gill	School	74.261661 31.681776	180	Care	0300-4518502 03004001710
57	GPS Rana Town	School	74.271579 31.680343	215	Rana Manzoor Ahmad	0301-2160530
58	GPS Bashir Modle	School	74.275609 31.686522	85	Badar Hussain	0306-4474412
59	GPS Kala Gaon	School	74.105143 31.664785	60	Karamat Ali	03424280075
60	GPS Chak 38	School	74.269407 31.719162	140	Amanat Ali	03444950960
61	GPS Chak 37	School	74.261793 31.711573	120	Shahzad Ahnad Butt	03378057887
62	GPS Shamke	School	74.228323 31.711086	95	Muhammad Afzal	03234112502
63	GPS Aman Pura	School	74.257447 31.706202	120	M. umar	03323777792

S#	Name	Institute type (School, College etc.)	GPS Coordinates	Enrolment	Incharge Name	Contact Number
64	GPS Ratan Pura	School	74.3131.8 31.747272	90	Adil Shoukat	03447861580
65	GPS Saray Kam	School	74.342019 31.750952	86	Yasir Ali	03424455384
66	GPS Jamal Pura	School	74.443058 31.749603	83	M. Waqas Ali	0331-4072171
67	GPS Nano dogar Nawulan	School	74.062253 31.358215	151	Muhammad Mansha	03334117330
68	GES Nano Dogar Araian	School	74.062858 31.358062	244	M. Imran	03334822815
69	GGHS Bhago Dial	School	74.497811 31.966775	382	Afza Afzal	03454975917
70	GGHS Mardana	School	74.616453 31.958090	60	Tanzeela Rasheed	03077134686
71	GGHS Gharyal Kalan	School	74.606864 32.009799	190	Misbah	03237707548
72	GHS Gharyal Kalan	School	74.608846 32.010087	190	Sarfraz Ahmad	03137717907
73	GGHS Noon	School	74.246137 31.746245	725	Misbah-ul-Haq Bajwa	03066770406
74	GGHS Nangal Kaswal	School	74.295023 31.814405	203	Abeera Sharif	03228915519

ANNEX V: LIST OF INDUSTRIES WITH THEIR RISK LEVEL

S#	Industry Name	Location	GPS Coordinates	Risk Type (Chemical, Biological, Radiological, Nuclear)	Name and Contact of Focal Person	Risk Level (low, medium, high)	Prone to Hazard? Fire/ Floods/ Earthquake
1.	Nimir Chemicals Ltd., Faisalabad Road, Sheikhupura	Faisalabad Road	N31.61090 E073.89050	Chemicals	Aahad Shah 030-4440010	High	Fire
2.	Nimir Industrial Chemicals Ltd. Faisalabad Road, Sheikhupura	Faisalabad Road	N 31.60965 E073.88884	Chemicals	Imran 0300-8469646	High	Fire
3.	Synergy Paper Board Mills Ltd., Faisalabad Road, Sheikhupura	Faisalabad Road	N31.64426 E073.92783	Paper Chemicals	Aalam	High	Fire
4.	Umar Farms (Pvt.) Ltd, Faisalabad Road, Sheikhupura	Faisalabad Road	N31.60106 E073.85815	Biological	Tahir Amin 0322-6304375	Low	
5.	PSO Oil Depot, Sheikhupura Sargodha Road	Sargodha Road	N 31.7322 E73.8799	Chemicals	Khawaja Haris 0321-4338673	High	Fire
6.	TOTAL Parco Oil Depot, Sheikhupura Sargodha Road	Sargodha Road	N 31.7322 E73.8799	Chemicals	Azam 0300-8405790	High	Fire
7.	SHELL Oil, Sheikhupura Sargodha Road	Sargodha Road	N31.7335 E73.8900	Chemicals	Khawar 0336-2375258	High	Fire
8.	Attock Oil Depot, Sheikhupura Sargodha Road	Sargodha Road	N 31.733 E73.8781	Chemicals	Rihan 0307-7775446	High	Fire
9.	Hascol Oil Depot, Sheikhupura Sargodha Road	Sargodha Road	N31.732 E73.8817	Chemicals	Aurang Zaib 0333-4411459	High	Fire
10.	Admore Oil Depot, Sheikhupura Sargodha Road	Sargodha Road	N31.736 E.73.8736	Chemicals	Waqas Ahmad 0301-4283559	High	Fire
11.	PARCO Diesel Depot, Sheikhupura Sargodha Road	Sargodha Road	N31.735 E73.8800	Chemicals	Muhammad Zaheer 0333-5229282 056-3540113	High	Fire
12	Olympia Industries Ltd.,	Chichoki Malian Road, Sheikhupura		Chemical, Biological, Radiological, Nuclear	Abdul Raug	High	Fire
13	ICI Polyester,	Sheikhupura Lahore Road.	N31.69181 E074.05421	-do-	Nisar Dogar	Low	Fire

S#	Industry Name	Location	GPS Coordinates	Risk Type (Chemical, Biological, Radiological, Nuclear)	Name and Contact of Focal Person	Risk Level (low, medium, high)	Prone to Hazard? Fire/ Floods/ Earthquake
14	Rupali Polyester	30-K.M. Lahore Road, Sheikhupura	N31.690896 E74.053792	-do-	Muhammad Farooq	Low	Fire
15	Rupafil Ltd.,	Sharaqpur Road, Sheikhupura	N31.624914 E74.043001	-do-	Ejaz Khan	Low	Fire
16	Qadria Board Mills	Lahore Sheikhupura Road.	N31.689694 E74.041697	-do-	Malik Sajjad	High	Fire
17	Premier Paper Mills,	Lahore Sheikhupura Road.	N31.694520 E74.043513	-do-	Rana Saeed	High	Fire
18	Flying Paper Mills	Lahore Sheikhupura Road.	N31.400915 E740530.50	-do-	Muhammad Qasim	High	Fire
19	Fatima Fort	Lahore Sheikhupura Road.	N31.682027 E74.081155	-do-	Zahid Rafique	High	Fire
20	Sohail Textile	Sargodha Road, Sheikhupura	N31.636340 E73.081468	-do-	Tahir Shah	High	Fire
21	Qutab Textile	Sargodha Road, Sheikhupura	N31.732885 E73.915623	-do-	Muhammad Hassan	High	Fire
22	Prosperity Weaving Mills	32-K.M. Sharaqpur Road	N31.602108 E74.058893	-do-	M.Imran	High	Fire
23	Olympia Blanded No. 1	Chichoki Malian	N31.707213 E74.092260	-do-	Aslam Randhawa	High	Fire
24	Olympia Blanded No. 2	Chichoki Malian	N31.707213 E74.092260	-do-	Muhammad Majeed	High	Fire
25	Rawal Textile Mills	Chichoki Malian, Sheikhupura	N31.705917 E74.092131	-do-	Mustansar	High	Fire
26	Shahzad Textile	Lahore Road, Sheikhupura	N31.702362 E74.027286	-do-	Abdul Qayyum	High	Fire
27	Ayesha Spinning Mills	Lahore Road, Sheikhupura	N31.697070 E74.038106	-do-	Anza	High	Fire
28	Spincot Textile	Sargodha Road	N31.738885 E73.874520	-do-	Malik Mahboob	High	Fire
29	Noorani Spinning	Lahore Road Sheikhupura	N31.692593 E74.047601	-do-	M. Idrees	High	Fire
30	Muhammadia Paper Board	Lahore Road Sheikhupura	N31.683200 E74.057208	-do-	M. Ali	High	Fire
31	Anwar Rashid Industry	Chichoki Malian, Sheikhupura	N31.700496 E74.067401	-do-	Aurang Zaib	High	Fire
32	Inam Paper Mills	Barianwala Sheikhupura	N31.685358 E74.035472	-do-	Riasat Ali	High	Fire
33	Panther Sports	Chichoki Malian, Sheikhupura	N31.700861 E74.067477	-do-	Zafar Iqbal	High	Fire
34	Easter Cone Supplier	Lahore Road Sheikhupura	N31.695567 E74.036355	-do-	Naeem Riasat Virk	High	Fire
35	Arsam Pulp & Paper Board	Barianwala, Skp	N31.687676 E74.039288	-do-	Tallat	High	Fire
36	Panther Tyre	Lahore Road	N31.688046	-do-	Zulifqar	High	Fire

S#	Industry Name	Location	GPS Coordinates	Risk Type (Chemical, Biological, Radiological, Nuclear)	Name and Contact of Focal Person	Risk Level (low, medium, high)	Prone to Hazard? Fire/ Floods/ Earthquake
		Sheikhupura	E74.062005				
37	Ayesha Spinning (Socks)	Lahore Road Sheikhupura	N31.697608 E74.036545	-do-	Tanveer	High	Fire
38	Elahi Paper Board	Marade Road, Sheikhupura	N31.678925 E74.206841	-do-	M.Amin	High	Fire
39	Fazal Chemicals	Mannopur	N31.708883 E74.092045	-do-	Sarfraz Ahmad	High	Fire
40	Mehtabi Spinning	Sargodha Road, Skp.	N31.738708 E73.875288	-do-	Farooqi	High	Fire
41	Al-Karam Paper Mills	Baddo Maradi, Skp	N31.679956 E74.02779	-do-	Muhammad Ahsan	High	Fire
42	Kamran Spinning	Baddo Maradi, Skp	N31.680921 E74.029668	-do-	Manzoor	High	Fire
43	Al-Mizan Board Mills	Saim Park Rd. Skp.	N31.678884 E74.026835	-do-	M.Sarwar	High	Fire
44	Sumeria Industries	Lahore Road, Skp.	N31.696209 E74.035596	-do-	Ejaz Ahmad	High	Fire
45	Al-Barkat Spinning	Baddo Maradi, Skp		-do-	Shabir Hussain	High	Fire
46	AA Paper (Pvt.) Ltd.	5-K.M. Sharapqpur Road	N31.668707 E74.012818	-do-	Humayon	High	Fire
47	Model Paper Board Mills	5-K.M. Sharapqpur Road	N31.670287 E74.014025	-do-	Abdul Hussain	High	Fire
48	Hassan Board,	22-K.M. G.T. Road, Muridke	N31.769404 E74.260063	Paper Chemicals	Amjad Bokhari 0321-9492025	High	Fire
49	Touheed Packages	12-K.M. G.T. Road, F/wala	N31.671087 E74.278806		Abid Hussain 0322-4404702	Medium	Fire
50	Al-Aziz Paper Mills	Narowal Road, Muridke	N31.862742 E74.315467	Paper Chemical	Rana Riaz 0300-9486022	Low	Fire
51	Dream Wood Industries	G.T. Road, Kala Shah Kaku	N31.725676 E74.258470	Chip Board	Muzaffar Ahmad 0315-9400094	High	Flood
52	Fynk Pharma	G.T. Road, Kala Shah Kaku	N31.725756 E74.260626	Medicine Chemical	Kashif Ali 0300-0998898	Low	Flood
53	Hamza Flour Mills	G.T. Road, F/wala	N31.676225 E74.279587	Flour	Mian Farooq	High	Flood
54	Ittehad Chemicals	G.T. Road, Kala Shah Kaku	N31.742119 E74.264990	Chemical	Ashiq Ahmad 0321-4230231	Medium	Chemical (Chlorine Leakage)
55	Leiner Pak Gellatine	G.T. Road, Kala Shah Kaku	N31.735141 E74.266248	Chemical	Col. Waseem Abbas 0302-8464893	High	Flood
56	Lustre Paint Inn	G.T. Road, F/wala	N31.667341 E74.273554	Paper Chemical	Wasif Siddique 0300-8488837	Low	Fire
57	Pakistan Drums	G.T. Road	N31.666348 E74.280799		Sh. Ilyas	Medium	Flood
58	Sadiq paper Mills	G.T. Road	N31.672855 E74.278514	Paper Chemical	Ghulam Fareed 0300-8818908	Low	Fire

S#	Industry Name	Location	GPS Coordinates	Risk Type (Chemical, Biological, Radiological, Nuclear)	Name and Contact of Focal Person	Risk Level (low, medium, high)	Prone to Hazard? Fire/ Floods/ Earthquake
59	Total Marketing Oil depot (Caltex Chevron Pakistan Oil)	Sargodha Road Sheikhupura	-	Chemical	Hammad 0300-8326489	High	Fire
60	Bakri Oil trading Company	Sargodha Road Sheikhupura	-	Chemical	Muhammad Shahbaz 0333-4349187	High	Fire

Annex VI:List of NGO working in the District

S#	NGO Name	NGO Type (Local, National, International)	Location where they are working	Sector/Cluster of work (e.g. WASH, Health, Education)	Focal Person Name	Contact No.
1	District Anti T.B ssociation	Local	Opposite National Modal School Saargodha Road SKP	Health	Mr. Ghulam Nabi	056-3784039 0333-4294262
2	Anjuam Khana Dar Khawateen	Local	Opposite Goal Masjid Khalid Road Social Welfare Complex Sheikhupura	Vocational Training	Mst. Naheed Ch.	0345-6280052
3	Noor Foundation	Local	DHQ Hospital Sheikhupura	Health	Afzal Sultan Dogar	0300 4507262
4	Umeed Welfare Society	Local	Salaho Din Road Mohalla Choree Gharan SKP	Education	Mst. Binish Qamar Dar	0321-4205129
5	Idara Tul Falah	Local	Housing Colony Block X City Sheikhupura	Health	Shukat Hussain	0333 4020616
6	Al Mustafa Welfare Society	Local	Liberty Market City Sheikhupura	Vocational Training	Mr. Majid Sulehri	0333-4242029
7	Social Welfare Foundation	Local	Nawan Khuo Chichoo ki Mallian SKP	Education	Quban Ali	0322-7946989
8	United Human Rights Association	Local	Shah Colony Road Rasool Nagar Skp	General Welfare	Bashir Ahmad	0331-4848009
9	Al Basar Welfare Foundatin	Local	Near old Taxi Stand SKP	Health	Dr. Zahid	0300-8431989
10	Bazam Welfare Foundation	Local	Nashaman Park Housing Colony SKP	Health	Mr. Masadiq Virk	0321-4402966 0321-4242141
11	Fatima Welfare Foundastion	Local	Jandiala Road SKP	Health	Sh. Muzafar	0322-5890147
12	Ehsas Welfare Foundation,	Local	Akbar Tawar Regal Chowk SKP	Vocational Training	Haji Asghar Ali Virk	0333-4293340 0333-4840940
13	Al-Nisa Welfare Society	Local	Kot Ranjeet Gujranwala Road SKP	General Welfare	Mst. Nazia Latief	0333- 41140610333- 4303736
14	Patient Welfare Society	Local	DHQ Hospital Sheikhupura	Health	Malik Arfan Islam	0321-4170200
15	Prisoners Welfare Society	Local	District Jail Sheikhupura	Welfare of Female &Children	Malik Muhammad Yaseen	056-9239217

S#	NGO Name	NGO Type (Local, National, International)	Location where they are working	Sector/Cluster of work (e.g. WASH, Health, Education)	Focal Person Name	Contact No.
				Prisoners		
16	Pukar welfare Foundation	Local	Loona Park, Gujranwala Road Sheikhupura	Health	Muhammad Raza Mughal	0300-4378054
17	Social Welfare Society	Local	Kot Hussain Gujranwala Road Sheikhupura	Health	Mr. Afzal Nizami	0321-7269855
18	Rural Development Organization	Local	Al Shifa Trust Eye & General Hospital Muhallah Chisht Nagar Farooqabad	Health	Mr. Abrar Ahmad	0300-8145733
19	Pak Development Organization	Local	Mohallah Tanki Wala Muridke Road Farooqabad Distt. Sheikhupura	Vocational Training	Muhammad Maqsood Ahmad	0300-4903717
20	Anjumn e Tahafiz e Ghurba	Local	Muhallah Guru Nanak Pura Farooqabad	Vocational Training	Mr. Muhammad Hanif	0300-9495463 0300-8476699
21	Social Welfare Society	Local	Dera Gujran Buttar	Health	Rana Nabeel Azmat	0300-4768174
22	Al-Rehman Welfare Society	Local	Dera Mallah Singh Farooqabad	Religious Education Industrial Center	Hafiz Muhammad Sarwar	0333-4021874
23	Human Rights Welfare Foundation	Local	Mohallah Shah Abad Farooqabad	Education	Syed Rizwan Haidar Gillani	0315-4100318 0305-4344815
24	Sacha Sodha Welfare Society	Local	UC 94 Farooqabad	Health	Munawar Hussain	0300-4847786
25	Al Raza Welfare Society	Local	Manawala Town Tehsil & Distt SKP	Health	Mr. Yasin	0321-7269635 0345-4834037
26	Muhammad Sadiq Hajra Bibi Memorial Welfare Society	Local	Nawan Kot Head Roshan Din 18- Km Fasilabad Road Skp	Health	Adil Mehmood	056-3879181
27	Social Welfare Society	Local	Ghulla Wattwan Tehsil & District Sheikhupura	Education	Bushra Kokab	0302-4451546
28	Human Development	Local	Tehsil Safdarabad	Education	M. Mustafa	0345-7840414

S#	NGO Name	NGO Type (Local, National, International)	Location where they are working	Sector/Cluster of work (e.g. WASH, Health, Education)	Focal Person Name	Contact No.
	Organization		Distt. Skp			
29	Khawateen Welfare Society	Local	Bariyanwala Tehsil & District Sheikhupura	Vocational Training	Khalida Perveen	0307-2009876
30	Anjumn e Razzay Habib Welfare Society,	Local	Tehsil Muridke Distt. Skp	Vocational Training	Malik Zulfiqar Ahmad	0321-3178909
31	Shaheen Welfare Society	Local	Hussain Town Tehsil Muridke Distt. Sheikhupura	Vocational Training	M.Anwar Khokhar	0321-7900033
32	Al Jaza Welfare Society	Local	Ravi Rian Tehsil Muridke Distt. Sheikhupura	Education	Fiaz Hussain Faizi	0323-7041714
33	Special People Welfare Society,	Local	Tehsil Muridke Distt. Sheikhupura	Disability	M.Akram	0321-7996779
34	Patient Welfare Society	Local	Tehsil Head Quarter Hospital Muridke District Sheikhupura	Health	Mst. Nazia Mumtaz	0300-4258938 0300-4233446
35	Health Education & Literacy Programme	Local	Tehsil Sharaqpur District Sheikhupura	General Welfare	Aukhtar Ali Monga	0345-8469270 056-2592763
36	Umme-Habiba Welfare Foundation	Local	Javed Nagar Tehsil Ferozwala Distt.Skp	General Welfare	Syed Iftikhar Bashir	0300-4790086 0321-4467176
37	Khatoon Welfare Society	Local	Kala Shah Kaku Ferozwala Distt. Sheikhupura	Health ,Religious Education	Bashir Ahmad	0300-4437849 0331-5969093
38	Social Welfare Society	Local	Kot Abdul Malik Tehsil Ferozwala District SKP	General Welfare	Mian Muhammad Riaz	0300-4349920
39	Awami Social Welfare Committee	Local	Rana Town Tehsil Ferozwala District Sheikhupura	Health	Syed Shamsheer Ali Shah	0306-4230653 0304-4170308
40	Peoples Welfare Society	Local	Tehsil Ferozwala District Skp	General Welfare	Ch. Abdul Sattar	0300-4232149 0300-4971422
41	Sher-e-Bangal Welfare Society	Local	Sher-e-Bangal Colony Tehsil Ferozwala District Skp	Health	M.Mehboob Alam Awan	0321-4134735 0323 6285168
42	Nai Umeed Welfare Soceity	Local	Hakimpura Ferozewala District Sheikhupura	Education	Venus Hameed	0306-4700654 0344-4733543

S#	NGO Name	NGO Type (Local, National, International)	Location where they are working	Sector/Cluster of work (e.g. WASH, Health, Education)	Focal Person Name	Contact No.
43	Nai Raah Welfare Society	Local	76-KM Khuda Ki Basti Kala Shah Kaku Ferozewala	Education	Abdul Shereen	0321-4797667
44	True Belief Welfare Foundation	Local	Khan Building near Gulshan marriage hall Ferozwala District Sheikhupura	General Welfare	Sakina Shaheen Khan	0333-8309124

Annex VII: Contact list of main stakeholders/ departments

S#	Designation	Person Name	Telephone (Office)	Telephone (Residential)	Mobile
1.	Deputy Commissioner, SKP	Rana Shakeel Aslam	056-9200150-1	056-9200153-54	0304-0920061
2.	District Police Officer, SKP	Faisal Mukhtar	056-9200104-7	056-9200105	0300-4911922
3.	Addl. Deputy Commissioner (Rev)	Sarmat Taimoor	056-9200163	-	0300-4333295
4.	Addl. Deputy Commissioner (Gen)	Mr. Ehsan ul Haq Zia	056-9200156	-	03146525991
5.	Assistant Commissioner (HR & Coord)	Madam Sadia Jamal	056-9200157	-	0332-4443354
6.	DEO (1122), Rescue, Sheikhupura	Rana Muhammad Ijaz	056-3543079 0304-9270193	-	0336-4441122
7.	System Network Administrator, SKP	Syed Aqeel Abbas	056-9200155	-	0333-4327680
8.	Assistant Commissioner, SKP	Mian Muhammad Jameel	056-9200165	-	0321-4285591
9.	Assistant Commissioner, Ferozewala	Sharina Janjua	042-37930777	-	0300-8881813
10.	Assistant Commissioner, Muridke	Ibrahim Rubab	042-37951200	-	0301-5947688
11.	Assistant Commissioner, Sharaqpur	Muzzamal Ilyas	056-2590215	-	0333-4286904
12.	Assistant Commissioner, Safdarabad	Miss Laraib Aslam	056-3861563	-	03244971919 0320-5828084
13.	Chief Executive Officer, (Edu), SKP	Malik Manzoor	056-9200020/21	056-9239012	0321-6616987
14.	Chief Executive Officer, (Health), SKP	Dr. Roy Samee Ullah	056-3810303	-	0300-9638292
15.	Deputy Director, (Agri), SKP	Khalid Khan	056-9200291	-	03007507852
16.	Add. Deputy Commissioner, (F&P), SKP	-	056-9200145-6	-	-
17.	XEN, Highway, SKP	Mian Arshad	056-9200063-4	-	0300-2795585
18.	SE LESCO (WAPDA), Sheikhupura	Asif Nadeem	056-9200200	-	0320-0521600
19.	XEN, (UCC), Sheikhupura	Jaffar Sahib	056-9200253	-	0346-4132454
20.	XEN, (UGD), Sheikhupura	Ali Hussnain	056-9200255-6	-	0347-6104059
21.	XEN, (UCC), Gujranwala	Usman Shehzad	055-9200199	-	0344-4132393
22.	XEN, (Drainage), Sheikhupura	Shaban Ghulam Nabi	056-9200250	-	0321-4402800
23.	XEN Highway (M&R)	Rafaqat Ali	042-99263000	-	03005642002
24.	XEN (Building)	Saqib Raheem	056-9239028	-	0302-4748153
25.	Deputy Director (NHA), GT Road	Javid Ali	042-99232556	-	0345-5974735
26.	Assistant Director (NHA), Lahore	Sohail Ahmad	042-99232556	-	0321-4127500
27.	XEN Public Health, Sheikhupura	Naeem	056-3793938	-	0321-3933392

S#	Designation	Person Name	Telephone (Office)	Telephone (Residential)	Mobile
28.	Secretary (DRTA), Sheikhupura	Asma Naz	056-3611022	-	0300-5569203
29.	DMO, Sheikhupura	Mian Nazir	056-9200177	-	0308-3361070
30.	District Food Controller	Mazhar Balooch	056-9200197	-	0308-7677710
31.	Civil Defence Officer, SKP	Mehmood Anjam	056-9239036 056-9200048	-	0300-7938406
32.	Addl. Director (Live Stock)	Iftikhar Ahmad Arqam	056-9200053	-	0302-8650681
33.	General Assistant Revenue	Mian Nazir	056-9200162	-	0308-3361070
34.	OS/AOA, Deputy Commissioner, SKP	Azhar Abbas Gilani	056-9200160	-	0321-4193292
35.	Deputy Director (Social Welfare), SKP	M. Nawaz	056-9200027	-	0300-4238341
36.	Tehsildar, Sheikhupura	Ghulam Mustafa Gujjar	-	-	0300-9634087
37.	Tehsildar, Ferozewala	Shukat Altaf Khagha	042-37918864	-	0300-6903569
38.	Tehsildar, Sharaqpur	Syed Akmal Hadir Shah	-	-	0333-4232477
39.	Tehsildar, Muridke	Khawaja Nadeem	042-37990071	-	0300-8478288
40.	Tehsildar, Safdarabad	Zafarullah Malik	-	-	0300-4999753
41.	CO, Municipal Corpotation, SKP	Ahsan Inyat Sindhu	056-9200174	-	0342-7777200
42.	CO, Municipal Corpotation, Ferozewala	CH: Farhan Bhadar	-	-	0333-4085015
43.	CO, Municipal Corpotation, Muridke	Muhammad Mansha	-	-	0321-8484847
44.	CO, Municipal Committees, Farooqabad	Javed Chohan	-	-	0333-8300465
43.	CO, Municipal Committee, Safdarabad	Rana Muhammad Aslam	-	-	0344-4084845
45.	CO, Municipal Committee, Sharaqpur	Muhammad Mansha Ashan	-	-	0300-9420927
46.	CO, T.C, Manawala	Mian Usman	-	-	0322-5734508
47.	CO, Town Committee, Narang	Muhammad Khalil	-	-	0300-4370115
48.	CO, Town Committee, Nangal Shadan/ CO, Tehsil Council, Muridke	M. Sardar Ali	-	-	0302-6193255
49.	CO, Town Committee, Khanpur Nabi pur	M. Naveed Haider ADLG	-	-	0333-6986326
50.	CO, Town Committee, Kot Pindi Das	M. Naveed Haider ADLG	-	-	0333-6986326
51.	CO, Town Committee Khanqa Dogran	MuhammadIqbal	-	-	0300-4119685
52.	CO, Town Committee, Jabran	Tariq Mehmood	-	-	03228422455
53.	CO, Town Committee, Ferozewattwan	A.D Chann	-	-	0300-4786424
54.	CO, Town Committee, Saccha Soda	Malik Mansha	-	-	0300-4099725

Annex VIII: List of volunteers

S#	Volunteer Name	CNIC	Address	Contact Number and Email	Blood Group	Time Required to be on-board
1	Mr. Imran Ali	35404-3219262-1	Dera Safanwala Jewanpura city Skp.	0342-4552916		4 hors.
2	Mr. Dilawar Hussain	35404-5066070-7	Bhikhi Road Mohallah Rafaqatabad city Skp.	0308-4627117		4 hors.
3	Mr. Zahid Hussain	35404-5793332-9	Mohallah Muhammad Pura Janidiala Road Skp.	0304-5700412		4 hors.
4	Mr. Basharat Ali	35404-5673630-1	Mirajpura Jandiala Road Skp.	0322-7949349		4 hors.
5	Mr. Asghar Ali Naeemi	35404-1502244-1	Chak No.9 Tehsil & Distt. Skp.	0300-8124832		4 hors.
6	Mr. Hanif	35404-7153367-5	Mirajpura Janidiala Road city Skp.	0322-7913213		4 hors.
7	Mr. Muhammad Yousaf	35404-1838520-1	Muhammad Pura Bhikhi	0345-4653604		4 hors.
8	Mr. Qasam Ali	35404-7762167-3	Gopi Rai P/o Same Tehsil & Distt. Skp.	0307-8821367		4 hors.
9	Mr. Asghar Ali	35402-0346121-3	Chah Waris P/o Ali Pur Tehsil & Distt. Nankana	0309-4545282		4 hors.
10	Mr. Muhammad Amin	35401-0465413-7	Bhikhi Road city Sheikhupura	0302-4286892		4 hors.
11	Mr. Azam Aslam	35404-5355385-9	Bharrianwala P/o Jetah Tehsil & Distt. Skp.	0303-4183859		4 hors.
12	Mr. Shahbaz Ali	35404-2809731-9	Sirrianwala P/o Malowal Tehsil & Distt. Skp.	0304-4505818		4 hors.
13	Mr. Muhammad Ali	35404-8980566-9	Miyana Thatha P/o Hohike Tehsil & Distt. Skp.	0333-6578775		4 hors.
14	Mr. Abdul Ghafoor	35402-0107166-3	Kot Ismail P/o Bhikhi Tehsil & Distt. Skp.	0344-6642613		4 hors.
15	Mr. Sajid Ali	35404-0560924-3	Therrian P/o Ali Pur Tehsil & Distt. Skp.	0342-4718370		4 hors.
16	Mr. Pervaiz Masih	35404-1662237-9	Therrian P/o Ali Pur Tehsil & Distt. Skp.	0343-6065253		4 hors.
17	Mr. Bashir Ahmed	35501-0205578-5	Chah Waris P/o Ali Pur Tehsil & Distt. Nankana	0322-4923104		4 hors.
18	Mr. Shahid Iqbal	35404-7081932-9	Wara Mala Singh P/o Nawan Kot	0301-4735237		4 hors.
19	Mr. Rafaqat Ali	35404-3315835-7	Dera Mamana Bhikhi Tehsil & Distt. Skp.	0301-6438349		4 hors.
20	Mr. Muhammd Ashfaq	35401-0213612-1	Chah Waris P/o Ali Pur Tehsil & Distt. Nankana	0343-1620226		4 hors.
21	Mr. Muhammad Asif	35404-8704099-9	Mehoonwali Tehsil & Distt. Skp.	0301-4119682		4 hors.
22	Mr. Nouman Zafar	35404-8784405-9	Wara Mala Singh P/o Nawan Kot	0302-4357544		4 hors.
23	Mr. Muhammad Asif	35404-6778876-3	Mehoonwali Tehsil & Distt. Skp.	0308-4552832		4 hors.
24	Mr. Imdad Hussain	35404-0820532-9	Chak No. 418 GB, Tandalianwala Faisalabad	0303-4291847		4 hors.
25	Mr. Zafar Iqbal	35404-9826011-7	Wara Mala Singh P/o Nawan Kot	0301-4618429		4 hors.

S#	Volunteer Name	CNIC	Address	Contact Number and Email	Blood Group	Time Required to be on-board
26	Mr. Tahir Mehmood	35404-9412356-7	Nawan Kot P/o Same Tehsil & Distt. Skp.	0301-4946290		4 hrs.
27	Mr. Daniyal	35404-4942381-1	Alamgir Road Shama Chowk city Skp.	0306-2503411		4 hrs.
28	Mr. Raja Qaisar	35404-1412857-1	-do-	0344-9161432		4 hrs.
29	Mr. Muhammad Anees	35404-1641747-3	Mohallan Hujranwala Nishter Road old city Skp.	0300-8865611		4 hrs.
30	Mr. Muhammad Husnain	35404-6310788-5	-do-	0306-4910800		4 hrs.
31	Mr. Ghalib Khalid	35404-0702081-1	-do-	0333-4152702	-	4 hrs.
32	Mr. Ahsan Khaliq	35404-4709013-5	-do-	0324-8436515	-	4 hrs.
33	Mr. Tayyab Ali	35404-	Sheesh Mohal Sko	0314-4085516	-	4 hrs.
34	Mr. Mehmood Ahmed	35404-6582276-3	Usman Nagar Jandiala Road	0302-4056007	-	4 hrs.
35	Mr. Kashif Adeel	35404-1534846-9	Nai Abadi Arrianwala	0300-8064911	-	4 hrs.
36	Mr. Muhammad Naeem	35404-1098812-1	Rafaqat arrianwala Abad	0300-8064911	-	4 hrs.
37	Mr. Bilal Ahmed Khan	35404-8905222-1	Kharrianwala	0300-4695860	-	4 hrs.
38	Mr. Haider Ali	35404-5069063-5	Civil Line Skp.	0300-9814730	-	4 hrs.
39	Mr. Hamad Naseem	35404-6342797-5	Khokhar Town Skp.	0300-4474494	-	4 hrs.
40	Ch. Manzar Saeed	35404-1933377-5	Jadiala Sher Khan	0300-7777608	-	4 hrs.
41	Mr. Nadeem Arshad	35404-6270002-7	Mohallah Farooq Gunj Skp.	0300-4582947	-	4 hrs.
42	Rana Anwaar ul Haq	35404-1581444-5	Khalid Road Skp.	0312-1400424	-	4 hrs.
43	Mr. Babar Naseer	35404-8236578-1	Mohallah Hanjuranwala	0304-4313223	-	4 hrs.
44	Mr. Malik Asif Abbas	35404-8861644-7	Jandila Roade Hussain Pura	0323-4694860	-	4 hrs.
45	Rana Ghulam Shabbir	35401-5087503-1	Nagal Sadaan Muridke	0311-4694860	-	4 hrs.
45	Mr. Zulfiqar Ali	35404-0678595-7	Old City Skp.	0305-6207752	-	4 hrs.
47	Mian Shabbir Hussain	35404-7524758-7	-do-	0321-4239835	-	4 hrs.
48	Mr. Amjid Ali	35404-502550-9	Machali Fram Skp.	0341-4100385	-	4 hrs.
49	Mr. Qaisar Mehmood	35404-6404204-3	Mohallah Hussainpura Skp.	0300-4694860	-	4 hrs.
50	Mr. Muhammad Shakil	35404-5182163-3	Mohallah Mambanwala Skp.	0301-4424229	-	4 hrs.
51	Mr. Ali Shahzad	35404-1100680-9	Hujranwala Skp.	0322-7277011	-	4 hrs.
52	Mr. Ali Asghar Malik	35404-3406379-3	Machali Park Skp.	0317-4134734	-	4 hrs.
53	Mian Naveed ur	35404-	Citi Kothi Road Skp-	0322-6402748	-	4 hrs.

S#	Volunteer Name	CNIC	Address	Contact Number and Email	Blood Group	Time Required to be on-board
	Reham	6404204-3				
54	Mr. Muhammad Awais	35404-3544620-1	-do-	0324-4899112	-	4 hrs.
55	Mr. Muhammad Imran	35404-7583287-5	Hussain Pura Skp.	0311-4336175	-	4 hrs.
56	Mr. Muhammad Irfan	35404-5320956-5	Farooqabad	0302-4836477	-	4 hrs.
57	Mr. Rustam Ali	35404-7241795-1	Mohallah Farooq Gunj	0312-4374153	-	4 hrs.
58	Mr. Shabbir Gull	35404-1612674-1	Old City Skpo.	0333-4733811	-	4 hrs.
59	Mr. Muhammad Kamran nkazir	35404-4429934-7	Usman Nagar Skp.	0341-4265952	-	4 hrs.
60	Mr. Waseem Abbas	35404-1853559-9	-do-	0302-0432890	-	4 hrs.
<u>Tehsil Muridke</u>						
1	Mr. Muhammad Waqas	35405-0428225-5	Kareempura Muridke	Mr. Muhammad Waqas	-	4 hrs.
2	Mr. Muhammad Zubair	35405-0502466-5	Manoabad Muridke	Mr. Muhammad Zubair	-	4 hrs.
3	Mr. Muhammad Usman Butt	35401-3227725-1	Manoabad Muridke	Mr. Muhammad Usman Butt	-	4 hrs.
4	Mr. Usman Mehboob	35405-0470582-3	Manoabad Muridke	Mr. Usman Mehboob	-	4 hrs.
5	Mr. Ali Raza	34102-3472650-0	Manoabad Muridke	Mr. Ali Raza	-	4 hrs.
6	Mr. Fazal Muhammad	35405-0459023-5	Manoabad Muridke	Mr. Fazal Muhammad	-	4 hrs.
7	Mr. Sheroz Ahmed	35405-0651142-9	Manoabad Muridke	Mr. Sheroz Ahmed	-	4 hrs.
8	Mr. Furqan Ali Butt	35401-4116093-3	Manoabad Muridke	Mr. Furqan Ali Butt	-	4 hrs.
9	Mr. Nasar Ali	35405-0380514-1	Zafraan Park, Muridke	Mr. Nasar Ali	-	4 hrs.
10	Muhammad Usman	35401-1733479-7	Zafraan Park, Muridke	Muhammad Usman		4 hrs.
11	Mr. Muhammad Tayyab	35401-5152421-5	Ravi Reyman Muridke	Mr. Muhammad Tayyab		4 hrs.
12	Mr. Mudassar Shehbaz	35405-0553551-5	Ahmedpura Muridke	Mr. Mudassar Shehbaz		4 hrs.
13	Mr. Abdul Qadoos	35401-3415698-7	Rehmanpura Daoke Muridke	Mr. Abdul Qadoos		4 hrs.
14	Mr. Muhammad Sardar	35405-0364140-7	Adda Chorra Rajputan Muridke	Mr. Muhammad Sardar		4 hrs.
15	Mr. Ghulam Muheyuddin	35401-0568427-5	Ravi Yayan muridke	Mr. Ghulam Muheyuddin		4 hrs.
16	Mr. Umer Hayat	35405-0431737-7	Zafar ParkMuridke	Mr. Umer Hayat		4 hrs.
17	Mr. Suleman Ahmed	35401-9968911-9	Aadian Road Muridke	Mr. Suleman Ahmed		4 hrs.

S#	Volunteer Name	CNIC	Address	Contact Number and Email	Blood Group	Time Required to be on-board
18	Mr. Muhammad Adnan	35405-0564662-9	Kot Yaqoob Muridke	Mr. Muhammad Adnan		4 hrs.
19	Mr.Fakhar	35401-4972892-5	Behrwana Muridke	Mr.Fakhar		4 hrs.
20	Mr. Muhammad Shabir	35405-0509740-9	Hardoke Muridke	Mr. Muhammad Shabir		4 hrs.
Tehsil Ferozewala						
1	Malik Sheraz Abbas	35202-8779391-3	Qaisar Town, H. Block Imamia Colony Ferozewala	0307-6838435		4 hrs.
2	Faisal Nadeem	35202-0685090-7	Qaisar Town, H. Block Imamia Colony Ferozewala	0310-4563054		4 hrs.
3	Kashif Munir	35401-6455164-9	40 Feet Bazaar Kot Abdul Malik	0321-4848405		4 hrs.
4	Qasim Razzaq	35401-793047-3	40 Feet Bazaar Kot Abdul Malik	0324-7631763		4 hrs.
5	Sheraz Imran	35401-5940256-9	Haji Street Kot Abdul Malik	0306-4672505		4 hrs.
6	Imran Anwar	35401-1762086-9	Haji Street Kot Abdul Malik	0321-4082186		4 hrs.
7	Usama Yaseen	35401-8381261-7	Jhogian Sialan Kot Abdul Malik	0324-4273843		4 hrs.
8	Ali Hussnain	35401-4341411-5	Main Sheikhupura Road Kot Abdul Malik	0323-6463230		4 hrs.
9	Usman	35401-3360791-1	Al- Hamad Garden Kot Adul Malik	0304-4886544		4 hrs.
10	Faisal Ali	35401-4021217-7	Near Main Easa Markaz Sharaqpur Bazaar Kot Abdul Malik	0301-4612348		4 hrs.
Tehsil Sharaqpur Sharif.						
1	Mr. Muhammad Ayub	35401-3419054-9	Madar Sharif, Sharaqpur shrif.	0302-4331175		4 hrs.
2	Mr.Muhammad Qalib Abbas	35401-1907999-9	Madar Sharif, Sharaqpur shrif.	0305-4521628		4 hrs.
3	Mr. Muneeb Ahmed	35402-3900575-9	Madar Sharif, Sharaqpur.	0309-1429675		4 hrs.
4	Mr.Sadaqat Husain	35401-0872831-7	Madar Sharif, Sharaqpur shrif.	0302-4090274		4 hrs.
5	Mr.Muhammad Sajid	35401-5190214-1	Madar Sharif, Sharaqpur shrif.	0304-0493415		4 hrs.
6	Mr.Nadeem Husain	35401-4227505-7	Madar Sharif, Sharaqpur shrif.	0306-6520098		4 hrs.
7	Mr.Abdul Majeed	35401-0191399-5	Madar Sharif, Sharaqpur shrif.	0307-4021343		4 hrs.
8	Mr.Khadim Hussain	35401-5614067-1	Madar Sharif, Sharaqpur shrif.	0305-2458724		4 hrs.
9	Mr.Mujahid Ali	35402-9673957-1	Madar Sharif, Sharaqpur shrif.	0308-4320857		4 hrs.
10	Mr.Muhammad Iqbal	35402-7989591-3	Madar Sharif, Sharaqpur shrif.	0303-6437232		4 hrs.

S#	Volunteer Name	CNIC	Address	Contact Number and Email	Blood Group	Time Required to be on-board
Tehsil Safdarabad.						
1	Mr. Zamir ul Hassan	35403-8691973-5	Ghali Hakeem Hanif Wali Safdarabad	0307-6225350		4 hrs.
2	Mr. Waqas Ghani	35504-0356867-3	Mohallah Saeed Nagar Safdarabad	03-5-7449852		4 hrs.
3	Mr. Bilal Ahmed	35403-9313313-3	Mohallah Mandi Link Road Safdarabad	0347-7788993		4 hrs.
4	Mr. Sher Yar	35403-3273253-5	Mohallah Saeed Nagar Safdarabad	0341-4605638		4 hrs.
5	Mr. Muhammad Nadeem	35403-4258712-9	Mohallah Kashiri Safdarabad	0340-4809445		4 hrs.
6	Mr. Muhammad Raza	35403-2894003-7	Mohallah Kashiri Safdarabad	0300-8804048		4 hrs.
7	Mr. Ibrar Hussain	35504-0381480-9	Ghali Baba Rehmat Wat Safdarabad	0344-6588814		4 hrs.
8	Mr. Muhammad Naeem	35403-9231389-9	Mohallah Shafique Nagar Safdarabad	0341-7764408		4 hrs.
9	Mr. Ali Asghar	35403-6062123-7	Railway Road Safdarabad	0343-6629528		4 hrs.
10	Mr. Muhammad Zaheer Shahid	35403-7385844-9	Mohallah Shafique Nagar Safdarabad	0341-5684500		4 hrs.

ANNEX IX: POLITICAL CONSTITUENCIES

National Constituencies				Provincial Constituencies			
Name of constituency	Name of Sitting Parliamentarian	Portfolio	Contact Number	Name of constituency	Name of Sitting Parliamentarian	Portfolio	Contact Number
NA-119	Mr. Rahat Aman Ullah Bhatti	MNA	03234760306	PP-135	Mr.Umar Aftab Khurram Ijaz	MPA	03014104982
			03219447259	PP-136			03214427915
NA-120	Rana Tanveer Hussain	MNA	03466339220	PP-137	Pir M. Ashraf Rasool	MPA	03218493721
			03218442255	PP-138			03413487132
NA-121	Mian Javed Latif	MNA	03008442255	PP-139	Mian Jalil	MPA	03008575164
			03008438700	PP-140			03218444940
NA-122	Sardar Irfan Dogar	MNA	03227270872	PP-141	Mian Khalid Mehmood	MPA Minister Disaster Management	0345-4001818 PA
			03018468684	PP-142			0300-8414634
			03218468684		Khan Sher Akbar Khan	MPA	0300-4300786

ANNEX X: LOCAL GOVERNMENT

District and Tehsil Level

S#	Designation	District/Tehsil Name	Name	Contact Number	Mobile Number
1	Deputy Commissioner/Administrator Municipal Corporation	Sheikhupura	Rana Shakeel Aslam	0569200153-4	0304-0920061
2	Chief Officer, M.C SKP	Sheikhupura	Ahsan Anyat Sandhu	-----	03426667200
3	Deputy Commissioner/Administrator Tehsil Council	Sheikhupura	Rana Shakeel Aslam	0569200153-4	0304-0920061
4	Chief Officer, Tehsil Council	Sheikhupura	M. Mansha Javed	----	0300-4099725
5	Administrator Municipal Committee, Farooqabad	Sheikhupura	Ghulam Mustafa (Tehsildar, SKP)	-----	0300-9634087
6	Chief Officer, M. C Farooqabad	Sheikhupura	Javed Iqbal Chohan	056-9200174	0300-9444303
7	Administrator Town Committee Ferozwattwan	Sheikhupura	M. Azam Virk, ADLG	-	0320-631680
8	Chief Officer, T.C Ferozwatwan	Sheikhupura	Allah Ditta Chan	-	0300-4786424
9	Administrator Town Committee, Manawala	Sheikhupura	M. Azam Virk, ADLG	-	0320-631680
10	Chief Officer, T.C Manawala	Sheikhupura	Mian Usman Ashraf	-	0300-5734508
11	Administrator Town Committee, Sucha Soda	Sheikhupura	M. Azam Virk, ADLG	-	0320-631680
12	Chief Officer. T.C Sucha Soda	Sheikhupura	Muhammad Mansha Javed		0300-4099725
13	Administrator T.C Jhabbran	Sheikhupura	M. Azam Virk, ADLG	-	0320-631680
14	Chief officer, T.C Jhabbran	Sheikhupura	Tariq Mehmood Sidhu	-	0300-8422455
15	Administrator Municipal Coporation, Muridke	Sheikhupura	M. Sarmad Tamoor Bhatti, A.C Mdk	-	0300-4244985
16	Chief Officer, M.C Muridke	Sheikhupura	Ria M.Mansah Tahir	-	0321-8484247
17	Administrator Tehsil Council Muridke	Sheikhupura	Ria M.Mansah Tahir	-	0321-8484247
18	Chief Officer T.C Muridke	Sheikhupura	Sardar Ali	-	0302-6193255
19	Administrator Town Committee, Narang	Sheikhupura	M. Shahid Iqbal, ADLG Mdk	-	03077684610
20	Chief Officer, T.C Narang	Sheikhupura	Khalil Ahmad	-	0300-4370115
21	Administrator Town Committee Nangal Sahdhan	Sheikhupura	M. Shahid Iqbal, ADLG Mdk	-	03077684610
22	Chief officer, T.C Nangal	Sheikhupura	Sardar Ali	-	0302-6193255

S#	Designation	District/Tehsil Name	Name	Contact Number	Mobile Number
	Sahdhan				
23	Administrator Muncipla Corporation Ferozewala	Sheikhupura	Syeda Tehniyat Bukhari A.C Ferozewala	-	0337-7908077
24	Chief Officer M.C Ferozewala	Sheikhupura	Usman Liaqat	-	0300-4642171
25	Administratro Tehsil Council Ferozewala	Sheikhupura	Syeda Tehniyat Bukhari A.C Ferozewala	-	0337-7908077
26	Chief Officer T.C Ferozewala	Sheikhupura	Asad Abbas		0300-4166377
27	Administratro Town Committee Khanpur	Sheikhupura	M. Naveed Haider, ADLG Ferozewala		03333-6986326
28	Chief Officer T.C Khanpur	Sheikhupura	Muhammad Ashraf		0300-4211007
29	Administrator Town Committee , Kot pindi Dass	Sheikhupura	M. Naveed Haider, ADLG Ferozewala		03333-6986326
30	Chief Officer , T.C kot Pindi Dass	Sheikhupura	Muhammad Attique Ashiq		0304-8188887
31	Administrator Muncipal Committee, Sharaqpur Sharif	Sheikhupura	Mazhar Ali Sarwar,A.C Sharaqpur		0321-4019194
31	Chief Officer , M.C Sharaqpur	Sheikhupura	Muhammad Mansha Asim		0300-9420927
33	Administrator Tehsil Council Sharaqpur	Sheikhupura	Mazhar Ali Sarwar,A.C Sharaqpur		0321-4019194
34	Chief Officer, T.C Sharaqpur	Sheikhupura	Tanveer Iqbal Baloch		0333-4548091
35	Administrator Muncipal Committee Safdarabad	Sheikhupura	Qurat-ul-An Zafar , A.C Safdarabad		0300-8889858
36	Administrator Tehsil Council Safdarabad	Sheikhupura	Qurat-ul-An Zafar , A.C Safdarabad		0300-8889858
37	Administrator , Town Committee Khanqa Dogran	Sheikhupura	Muhammad Shahid Iqbal (ADLG Safdarabad)		0307-7684610
38	Chief Officer, T.C Khanqa Dogran	Sheikhupura	Muhammad Iqbal		0300-4119686

ANNEX XI: DATA COLLECTION PERFORMAS

P1: House Damage Assessment

District: _____

Date: _____

S#	Name	Father Name	CNIC	Address	Revenue Estate	Union Council	Tehsil	Partially/Completely	Katcha/Pakka	%age of Damage	Contact No.	GPS Coordinates	Picture Taken (Y/N)
----	------	-------------	------	---------	----------------	---------------	--------	----------------------	--------------	----------------	-------------	-----------------	---------------------

P2: Deceased Person Reporting Performa

District: _____

Date: _____

S#	Name of deceased	Father' s name	Address	Domicile	Gender	Age	CNIC	Cause of death	Date of death	Place of death	Marital status	Next of kins (Name and Contact and CNIC etc.)	Verifying Officer (Name, Designation and Contact)	Compensation Paid or not
----	------------------	----------------	---------	----------	--------	-----	------	----------------	---------------	----------------	----------------	---	---	--------------------------

P3: Injurd Person Reposrting Performa

District: _____

Date: _____

S#	Name of injured	Father' s name	Address	Domicile	Gender	Age	CNIC	Cause of injury	Date of injury	Injury Type (Permanent or Temporary)	Compensation Paid or not
----	-----------------	----------------	---------	----------	--------	-----	------	-----------------	----------------	--------------------------------------	--------------------------

P4: Cattle Head Perished

District: _____

Date: _____

S#	Name of Farmer	Father Name	CNIC	Mauza	Tehsil	Type of Animals	Number of Animals (Cow, sheep etc.)	Vaccinated/ Unvaccinated	Witness 1 name and contact No.	Witness 2 Name and Contact No.
----	----------------	-------------	------	-------	--------	-----------------	-------------------------------------	--------------------------	--------------------------------	--------------------------------

P5: Crop Damages

District: _____

Date: _____

S#	Tehsil	Qanoongoi	Union Council	Mauza	Farmer Name	Land owner/Tenant	CNIC of farmer	Contact number	Type of Crops	Total land affected (acres)	% of mauza affected
----	--------	-----------	---------------	-------	-------------	-------------------	----------------	----------------	---------------	-----------------------------	---------------------

P6: Relief Distribution Tracking Performa

District: _____

Date: _____

S#	Location/ Destination	Arrival Date and time	Items	Quantity	Items short (if any)	Items sent by	Driver name	Received by	Bilty no
----	-----------------------	-----------------------	-------	----------	----------------------	---------------	-------------	-------------	----------

P7: Private Machinery (Boats, Bulldozers, cranes etc.)

In case of mega disaster that overwhelms the resources of the Government in certain area, the equipment of private owners are engaged to continue with evacuation, rescue or relief services. The following template is filled to maintain a record of boat owners that might be engaged at the time of a disaster.

District: _____

Date: _____

S#	Name of boat owner	Father name	Contact Number	Age	CNIC	Location of boat/Machinery	Type of Machinery (Boat, Bulldozers, Cranes etc.)	Engine type	Boat capacity	Equipment Condition	Number of Machinery
----	--------------------	-------------	----------------	-----	------	----------------------------	---	-------------	---------------	---------------------	---------------------

P8: Relief camp registration Performa

New entrants in the relief camps should be documented on a weekly basis by utilizing the following template:

District: _____

Date: _____

S#	Nationality	Domicile	Male	Female	Age	Children Under 12	Infants under 3	Sick	Injured	Pregnant
----	-------------	----------	------	--------	-----	-------------------	-----------------	------	---------	----------

P9:NGOs registration performa

All the Non-Governmental Organizations operating in the disaster affected areas should register themselves at PDMA's website. The following template has been developed for NGOs assisting the Government in disaster response.

District: _____

Date: _____

S#	Name of NGO	Local /INGO	Relief activity	Relief camp if any	Focal person in the district	Registered with PDMA	Foreigners to be visiting or not.
----	-------------	-------------	-----------------	--------------------	------------------------------	----------------------	-----------------------------------

P10: Control Room

PDMA requires all districts to setup a control room at the incidence of a disaster. This control room would plan and execute a well-knit Governmental disaster response by bringing together all representatives of the various Governmental departments. This control room would be operational around the clock and PDMA must be informed about its operation and in-charge by filling the following template:

District: _____ Focal Person: _____ Date: _____

S#	Location of control room	Shift I Incharge Name and Contact	Shift II Incharge Name and Contact	Shift III Incharge Name and Contact	Phone Numbers	Fax Numbers	E- Mail Address
----	--------------------------	-----------------------------------	------------------------------------	-------------------------------------	---------------	-------------	-----------------

ANNEX XII: CAMP MANAGEMENT SOPS

- Camps would be established in areas accessible by metalled roads so that provision of essential facilities is not difficult
- Basic facilities such as food, clean drinking water, health, hygiene and sanitation should be available at these shelters.
- Proper registration mechanism should be in place to differentiate between those actually affected and cunning opportunists
- Proper security system should be in place in coordination with the local police as the presence of police always acts as deterrence for criminals who may be attracted to such places.
- Emergency medical care should be available as well as a proper firefighting system as fire out breaks are common in such tents
- Proper camp management should be announced and notified and there should be a complaint cell as well
- A proper distribution mechanism should be in place to ensure that the needy get what they deserve.
- Scattered camps should be catered for and encouraged to join the main camp.
- At times shallow hand pumps are not safe for drinking as the water underground has been affected. In such cases clean medicated water should be provided through water bowsers.
- Vector control is an essential part of the camp management and steps should be taken to remove rats, snakes and mosquitoes etc.
- Un-accompanied and missing children shall be placed separately with proper care and fulfilment of their physical and psycho-social needs.
- Needs of women as per local and cultural environment shall be considered for establishing separate relief camps for ladies with provision of proper security and light arrangements.

Land	3.0-4.5 square meter per person
Shelter	3.5 square meter per person
Water	15-20 liters per person per day
Food	2100 kcal per person per day
Toilet	One per family of 6-10 persons
Health Centre	One per 20,000 persons
Child Friendly Spaces	2-4 year olds- 15 children:2 facilitators
	5-9 year olds-20 children : 2 facilitators
	10-18 year olds- 30 children :2 facilitators
Hospital	One for as many as 200,000 persons

ANNEX XIII: FLOOD BUNDS

INFORMATION REGARDING FLOOD BUND CATEGORY A

SR:#	NAME OF DIVISION	NAME OF EMBANKMENT / BUND	LENGTH (ft)
SARGODHA ZONE			
1	Rasul Head works Division	Right Guide Bund	2,121
2	-do-	Left Guide Bund	3,360
3	-do-	Right Guide Spur	2,762
4	-do-	Left Marginal Bund	17,170
	Total in feet.		25,413
	Total in Miles.		4.81
PMO BARRAGES			
1	Kalabagh H/Works Division	Jinnah Barrage	25,080
	Total in feet.		25,080
	Total in Miles.		4.75
FAISALABAD DIVISION			
1	Khanki Division	Left Marginal Bund	21,000
2	-do-	Right Marginal Bund	29,000
3	Jhang Division	Jhang Flood Protection Bund	43,875
4	Qadirabad Barrage Division	Left Marginal Bund	20,000
5	-do-	Right Marginal Bund	20,000
	Total in feet.		133,875
	Total in Miles.		25.36
BAHAWALPUR ZONE			
1	Punjnad Head works Division	Right Marginal Bund	15,000
2	-do-	Left Marginal Bund	15,000
3	-do-	Colony Protection Bund	15,000
4	Khanpur Canal Division	Minchin Flood Bund	10,000
	Total in feet.		55,000
	Total in Miles.		10.42
MULTAN ZONE.			
1	Trimmu Division	Right Marginal Bund	20,000
2	-do-	Left Marginal Bund	20,000
3	Sulemanki Division	Left Marginal Bund	10,000
4	-do-	Right Marginal Bund	10,000
5	Shuja Canal Division	Right Bank of Shujabad Branch	10,000
6	-do-	Akbar Flood Bund	10,000
	Total in feet.		80,000
	Total in Miles.		15.15
D.G.KHAN ZONE			
1	Taunsa Barrage	Right Guide Bund Upstream	15,000
2	-do-	Left Guide Bund	20,000
3	-do-	Shahwala Groyne	10,000
4	Muzaffargarh Canal Division	Muzaffargarh Flood Bund	50,000
5	-do-	Doaba Flood Bund.	5,000
6	-do-	Khargarh Flood Bund	5,000
7	-do-	Khanwah Flood Bund	5,000
8	Jampur Construction Division	Jampur Flood Bund	5,000
9	-do-	Rojhan Flood Bund	20,000
	Total in feet.		1,35,000
	Total in miles		25.57
LBDC(IP)			

1	Balloki Head works Division	Left Marginal Bund	15,000
2	do	Right Marginal Bund	15,000
Total in Feet			30,000
Total in miles			6
LAHORE ZONE			
1	FLOOD Bund Division Narawal	Jassar Highway Bund	10,000
2	do	Rayya flood Bund	5,000
3	Pasrur Link Division Sialkot	City Flood Protection Bund along Aik Nullah	7,340
4	do	Hajoipur Flood Protection Bund along Aik Nullah	86,00
5	do	Left Flood Protection Bund over deg Nullah from defence embankment to Zafarwala Kingra road	10,000
6	Marala Division UCC	Left Marginal Bund	50,000
7	do	Right Marginal Bund	10,000
8	Lahore Drainage Div.	Shahdara Flood Protection Bund	15,000
Total in Feet			115,940
Total in miles			22
Grand total in miles			114

INFORMATION REGARDING FLOOD BUND CATEGORY B

S#	Name of Division	Name of Embankment / Bund	Length (ft.)
SARGODHA ZONE			
1	Rasul Headworks Division	Important / Vulnerable Reaches	10,000
2	Bhakkar Division	-do-	10,000
3	Layyah Division	-do-	10,000
4	Jhelum Division	-do-	5,000
Total in feet.			35,000
Total in miles			6.63
FAISALABAD ZONE			
1	Khani Division	-do-	20,000
2	Jhang Division	-do-	50,000
3	Qadirabad Barrage Division	-do-	60,000
4	Burla Division	-do-	35,000
Total in feet.			165,000
Total in miles			31.25
BAHAWALPUR ZONE			
1	Punjad Headworks Division	-do-	90,000
2	Khanpur Canal Division	-do-	100,000
3	Bahawalpur Canal Division	-do-	50,000
4	Rahimyar Canal Division	-do-	50,000
Total in feet.			290,000
Total in miles			54.92
MULTAN ZONE			
1	Trimmu Division	-do-	80,000
2	Suleimanki Division	-do-	50,000

3	Shujabad Canal Division	-do-	60,000
	Total in feet.		190,000
	Total in miles		35.98
D.G.KHAN ZONE			
1	Taunsa Barrage	-do-	80,000
2	Kot Adu Canal Division	-do-	90,000
3	Muzaffargarh Canal Division	-do-	180,000
4	River Diversion Division	-do-	80,000
5	Jampur Construction Division	-do-	140,000
6	D.G.Khan Construction Division	-do-	60,000
	Total in feet.		630,000
	Total in miles		119.32
LBDC (IP)			
1	Balloki Headworks Division	-do-	40,000
2	Okara Division	-do-	40,000
3	Sahiwal Division	-do-	20,000
	Total in feet.		100,000
	Total in miles		18.94
LAHORE ZONE			
1	Flood Bund Division Narowal	-do-	40,000
2	Pasrur Link Division Sialkot	-do-	10,000
3	Chakbandi Division	-do-	20,000
4	Marala Division UCC	-do-	50,000
5	Lahore Drainage Division	-do-	80,000
6	Kasur Division	-do-	80,000
7	Gujranwala UCC	-do-	100,000
8	Rachna Drainage	-do-	42,000
	Total in feet.		422,000
	Total in miles		79.92
PMO BARRAGES			
1	Jinnah Barrage	-do-	20,000
	Total in feet.		20,000
	Total in miles		3.79
	Grand Total (in miles)		350.76

ANNEX XIV: RIVER DISCHARGE RATES

River	Gauge Site	Designed Capacity (lac Cs)	Flood Limits in Lac Cs.				Exp. High
			Low	Med:	High	Very High	
INDUS	Kalabagh	9.5	2.5	3.75	5	6.5	8
	Chashma	10	2.5	3.75	5	6.5	8
	Taunsa	10	2.5	3.75	5	6.5	8
JHELUM	Kohala	12	1	1.5	2	3	4
CHENAB	Mangla	10.6	0.75	1.1	1.5	2.25	3
	Rasul	8.5	0.75	1.1	1.5	2.25	3
	Marala	11	1	1.5	2	4	6
	Khanki	8	1	1.5	2	4	6
	Qadirabad	9	1	1.5	2	4	6
	Trimmu	6.45	1.5	2	3	4.5	6
RAVI	Punjnad	7	1.5	2	3	4.5	6
	Jassar	2.75	0.5	0.75	1	1.5	2
	Ravi Syphon	4	0.4	0.65	0.9	1.35	1.8
	Shahdara	2.5	0.4	0.65	0.9	1.35	1.8
SUTLEJ	Balloki	2.25	0.4	0.65	0.9	1.35	1.8
	Sidhnai	1.5	0.3	0.45	0.6	0.9	1.3
	G.S.Wala	10 ft.	19.5	21.5	23.3	25.3	
	Suleimanki	3.25	0.5	0.8	1.2	1.75	2.25
	Islam	3	0.5	0.8	1.2	1.75	2.25
	Mailsi Syphon	4	0.75	1.1	1.5	2.25	3

ANNEX XV: LIST OF BASIC TERMS

Acceptable risk

The level of loss a society or community considers it can live with and for which it does not need to invest in mitigation

Biological hazard

Biological vectors, micro-organisms, toxins and bioactive substances, which may cause the loss of life or injury, property damage, social and economic disruption or environmental degradation.

Capacity

A combination of all the strengths and resources available within a community, society or organization that can reduce the level of risk, or the effects of a disaster.

Capacity may include physical, institutional, social or economic means as well as skilled personnel or collective attributes such as leadership and management. Capacity may also be described as capability.

Capacity building

Efforts aimed to develop human skills or societal infrastructure within a community or organization needed to reduce the level of risk. In extended understanding, capacity building also includes development of institutional, financial, political and other resources, at different levels of the society.

Climate change

The climate of a place or region is changed if over an extended period (typically decades or longer) there is a statistically significant change in measurements of either the mean temperature or variability of the climate for that region.

Coping capacity

The means by which people or organizations use available resources and abilities to face a disaster. In general, this involves managing resources, both in normal times as well as during crises or adverse conditions.

Disaster

A serious disruption of the functioning of a community or society causing widespread human, material, economic or environmental losses which exceed the ability of the affected community or society to cope using its own resources. It results from the combination of hazards, conditions of vulnerability and insufficient capacity to reduce the potential negative consequences of risk.

Disaster risk management (DRM)

The comprehensive approach to reduce the adverse impacts of a disaster. DRM encompasses all actions taken before, during, and after the disasters. It includes activities on mitigation, preparedness, emergency response, recovery, rehabilitation, and reconstruction.

Disaster risk reduction/disaster reduction

The measures aimed to minimize vulnerabilities and disaster risks throughout a society, to avoid (prevention) or to limit (mitigation and preparedness) the adverse impacts of hazards, within the broad context of sustainable development.

Early warning

The provision of timely and effective information, through identified institutions, to communities and individuals so that they could take action to reduce their risks and prepare for effective response.

Emergency management

The management and deployment of resources for dealing with all aspects of emergencies, in particularly preparedness, response and rehabilitation

Forecast

Estimate of the occurrence of a future event (UNESCO, WMO). This term is used with different meanings in different disciplines.

Geological hazard

Natural earth processes that may cause the loss of life or injury, property damage, social and economic disruption or environmental degradation. For example earthquakes, tsunamis, volcanic activity and emissions, landslides, rockslides, rock falls or avalanches, surface collapses, expansive soils and debris or mud flows.