



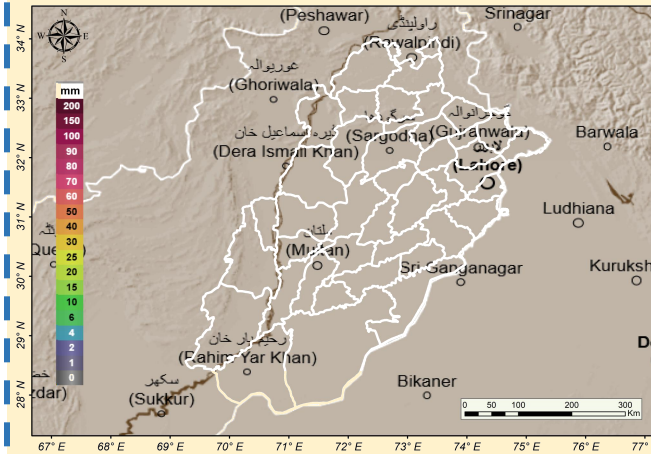
PROVINCIAL DISASTER MANAGEMENT AUTHORITY

DAILY SITUATION REPORT



LAST 24 HOURS WEATHER SITUATION

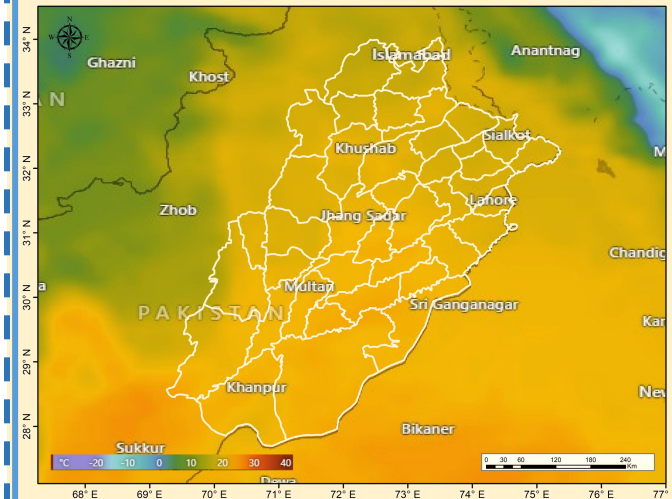
MAXIMUM PRECIPITATION (mm) LAST 24 HOURS



**Maximum Rainfall (mm) recorded
(last 24 Hours)**
8 AM (30.11.2025) till 8 AM (01.12.2025)

NO RAIN IS REPORTED IN THE DISTRICTS

MAXIMUM TEMPERATURE (°C) LAST 24 HOURS

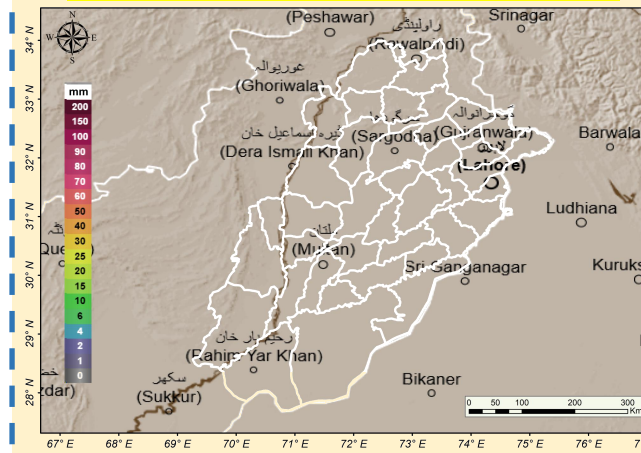


**Maximum Temperatures recorded
in last 24 hours**

- Bahawalpur = 27°C
- Bahawalnagar = 26°C
- Jhang = 26°C
- Khanpur = 26°C
- RY Khan = 26°C
- Bhakkar = 25°C
- Joharabad = 25°C
- Sahiwal = 25°C
- Sargodha = 25°C

NEXT 24 HOURS WEATHER SITUATION

MAXIMUM PRECIPITATION (mm) NEXT 24 HOURS



WEATHER FORECAST (24 HOURS)

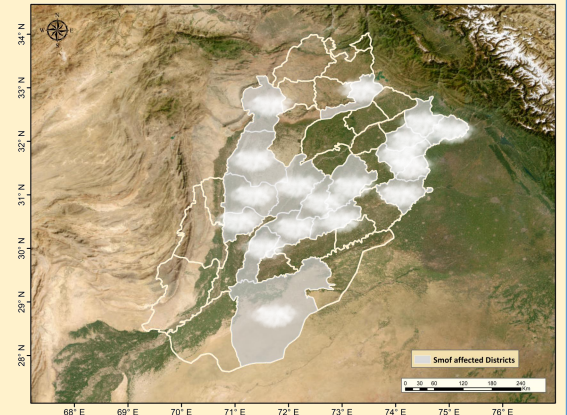
Monday

- Cold and dry weather is expected over most districts of the province.
- Cold and dry weather is likely in Murree and Galliyat and surroundings.
- Smog/fog may develop in Sialkot, Narowal, Lahore, Sheikhupura, Gujranwala, Gujrat, Jhelum, Faisalabad, Jhang, Toba Tek Singh, Sahiwal, Multan, Khanewal, Layyah, Kot Addu, Bahawalpur and surrounding areas during morning and night hours

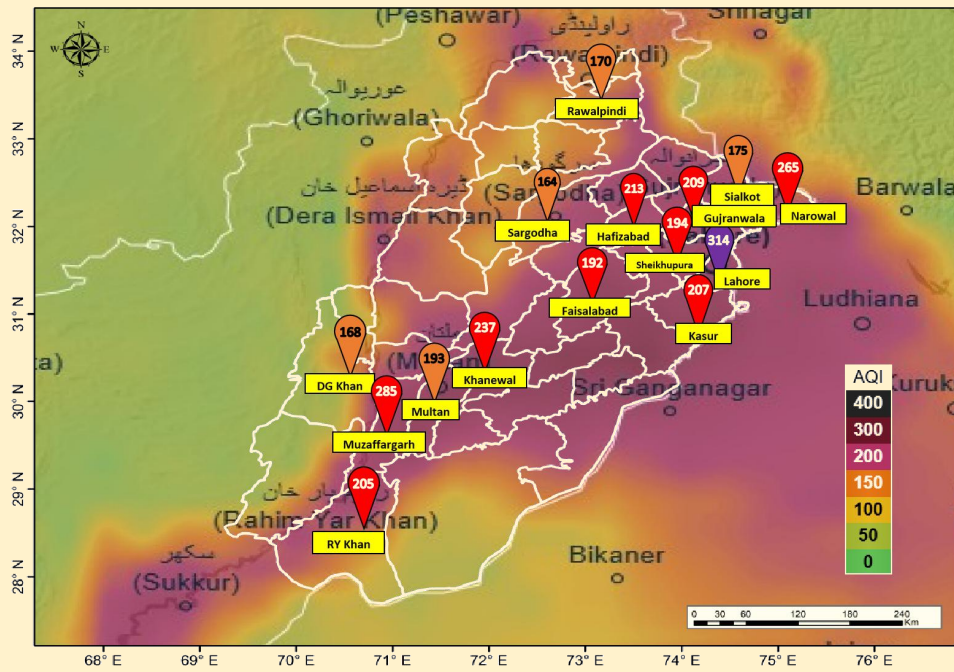
WEATHER ADVISORY

SMOG/ FOG CONDITIONS ARE LIKELY TO CONTINUE WITH INCREASING TENDENCY OVER PLAIN AREAS OF THE PROVINCE IN COMING DAYS

Due to persistent dry weather, **Smog/Fog conditions** are likely to increase over northeast and southern parts of Punjab (**Sialkot, Narowal, Lahore, Kasur, Sheikhupura, Gujranwala, Jhelum, Bhakkar, Mianwali, Faisalabad, Jhang, Toba Tek Singh, Sahiwal, Multan, Khanewal, Layyah, Kot Addu, Bahawalpur and surroundings**) especially during morning hours.



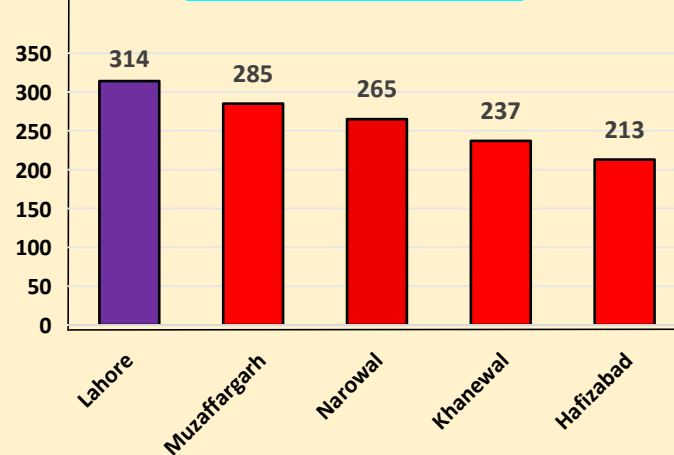
LAST 24 HOURS AVERAGED AQI SITUATION



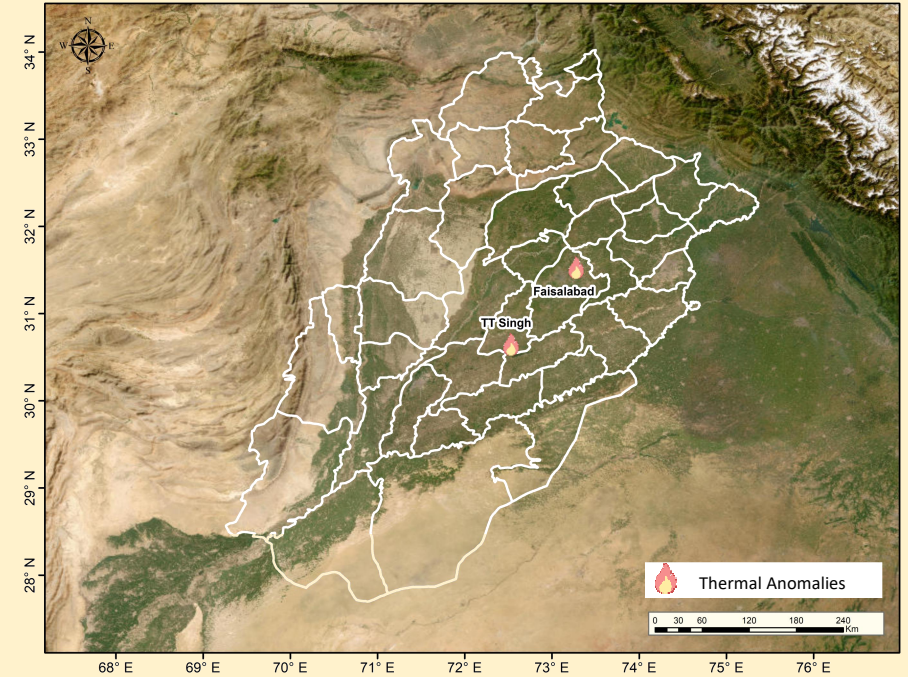
AQI Limits

0 - 50	Good
51 - 100	Satisfactory
101 - 150	Moderate
151 - 200	Unhealthy for sensitive group
201 - 300	Unhealthy
301 - 400	Very Unhealthy
401 - 500	Hazardous

Cities With Highest AQI



THERMAL ANOMALIES IN LAST 24 HOURS



Thermal Anomlies reported in districts during 24 hours

Sr. No.	Districts	Total Count
1	Faisalabad	1
2	TT Singh	2
Total		3