

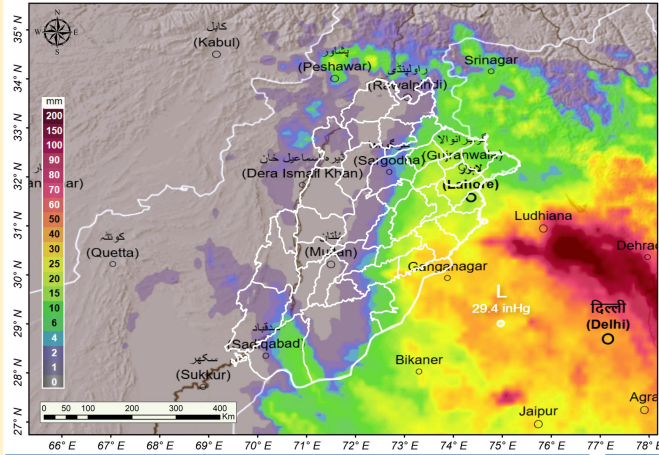


PROVINCIAL DISASTER MANAGEMENT AUTHORITY MONSOON/FLOOD FACT SHEET



LAST 24 HOURS WEATHER SITUATION

MAXIMUM PRECIPITATION (mm) LAST 24 HOURS



Maximum Temperatures recorded in last 24 hours

- Attock = 36.5 °C
- DG Khan = 35.3 °C
- Khanpur = 35.1 °C
- Bhakkar = 35.0 °C
- Noor pur thal = 35.0 °C
- RY Khan = 34.6 °C
- Bahawalpur City = 34.4 °C
- Karor (Layyah) = 34.2 °C
- Kot Addu = 34.0 °C

Maximum Rainfall (mm) recorded (last 6 Hours) (8 AM (1.09.2025) till 2 PM (1.09.2025))

Narowal = 4
Murree = Trace

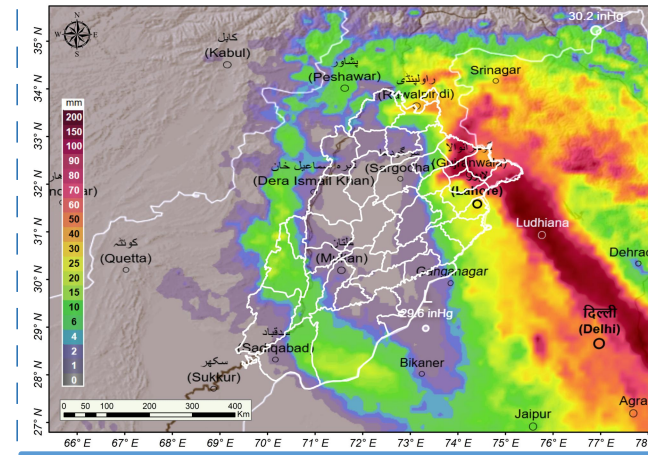
WEEKLY RAINFALL OUTLOOK (2nd September to 8th September)

WARNING

A well-marked monsoon low is present over southwest Haryana and adjoining Area, while a strong trough of a westerly wave lies over the northern parts of the country. As a result of the combined effect of these significant weather systems, Widespread Heavy to Very Heavy rainfall, along with Torrential downpours at scattered places, is expected over the upper catchments of Rivers Sutlej & Beas (Upstream of Ganda Singh Wala), Ravi, and Chenab, as well as in Lahore and Gujranwala divisions, during 1st to 3rd September 2025. Scattered thunderstorm rain with HEAVY TO VERY HEAVY RAINFALL is also expected in the upper catchments of river Jhelum and Gujrat division during the period.

NEXT 24 HOURS WEATHER SITUATION

MAXIMUM PRECIPITATION (mm) NEXT 24 HOURS



WEATHER FORECAST (24 HOURS)

MONDAY

- Widespread rain-wind/thundershower is likely in Sialkot, Narowal, Gujranwala, Gujrat, Mandi Bahauddin, Lahore, Kasur, Okara, Sheikhupura, Hafizabad, while at isolated places in Murree, Galliyat, Rawalpindi, Jhelum, Attock, Chakwal, Khushab, Noorpur Thal, Sargodha, Faisalabad, Jhang, Bhakkar, Mianwali, Bahawalnagar, Rahim Yar Khan, Taunsa, Kot Addu, Rajanpur, Bahawalpur, Layyah, Multan and Dera Ghazi Khan.
- Isolated heavyfalls is also expected in northeastern districts.

TUESDAY

- Widespread rain-wind/thundershower is likely in Sialkot, Narowal, Gujranwala, Gujrat, Mandi Bahauddin, Lahore, Kasur, Okara, Sheikhupura, Hafizabad, while at isolated places in Murree, Galliyat, Rawalpindi, Jhelum, Attock, Chakwal, Khushab, Noorpur Thal, Sargodha, Faisalabad, Jhang, Bhakkar, Mianwali, Bahawalnagar, Rahim Yar Khan, Taunsa, Kot Addu, Rajanpur, Bahawalpur, Layyah, Multan and Dera Ghazi Khan.
- Isolated heavyfalls is also expected in northeastern districts.

WEATHER ADVISORY

MORE RAIN WITH WIND/THUNDERSHOWER PREDICTED IN UPPER AND CENTRAL PARTS FROM 29TH AUGUST TO 2ND SEPTEMBER WITH OCCASIONAL GAPS

Met office informed on 27th August that strong monsoon currents from Arabian Sea & Bay of Bengal are likely to penetrate upper parts of the country from 29th August. A westerly wave is also likely to approach upper and central parts from 30th August. Under the influence of these meteorological conditions.

- Widespread rain-wind/thundershower (with scattered heavy falls at times very heavy) is expected in Rawalpindi, Murree, Galliyat, Attock, Chakwal, Jhelum, Mandi Bahauddin, Gujrat, Gujranwala, Hafizabad, Wazirabad, Lahore, Kasur, Sheikhupura, Sialkot, Narowal Mianwali, Khushab, Sargodha, Jhang, Toba Tek Singh, Nankana Sahib, Chiniot, Faisalabad and Sahiwal from 29th August to 2nd September with occasional gaps.
- Rain-wind/thundershower (with isolated heavy falls) is also likely in D.G. Khan, Bhakkar, Layyah, Multan, Bahawalpur, Bahawalnagar, Rajanpur and Rahimyar Khan from 29th (night) August to 2nd September.

LAST 24 HOURS HYDROLOGICAL SITUATION

DAMS	Located at River	Full Reservoir level (ft)	Current Reservoir level (ft)	Storage %
Mangla (Pakistan)	Jhelum	1242	1225.90	82.80
Tarbela (Pakistan)	Indus	1550	1550.06	100.00
Bhakra (India)	Sutlej	1680	1672.00	84.59
Pong (India)	Beas	1390	1393.57	98.08
Thein (India)	Ravi	1732	1724.66	92.06



FFD Discharge Report

Recorded at: 01-Sep-2025 12:00 PST

River	Site	Inflow	Outflow	Status	
Indus دریائے سندھ	Tarbela	187,000	155,300	NORMAL	
	Kalabagh	254,366	247,277	NORMAL	
	Chashma	237,167	232,217	NORMAL	
	Taunsa	221,176	206,676	NORMAL	
	Guddu	326,242	311,981	LOW	
	Sukkur	285,487	234,717	LOW	
Kabul دریائے کابل	Kotri	273,844	244,739	LOW	
	Nowshera	33,000	33,000	NORMAL	
	Jhelum دریائے جہلم	Mangla	30,000	8,000	NORMAL
		Rasul	10,541	5,341	NORMAL
	Chenab دریائے چناب	Marala	91,940	90,940	NORMAL
		Khanki	154,339	154,339	MEDIUM
Q.Abad		175,326	175,326	MEDIUM	
Chiniot		132,675	132,675	LOW	
Ravi دریائے راوی	Trimmu	550,965	550,965	VERY_HIGH	
	Panjnad	123,717	109,747	NORMAL	
	Jassar	69,552	69,552	LOW	
	Shahdara	66,020	66,020	MEDIUM	
Sutlej دریائے ستلج	Balloki	156,180	156,180	VERY_HIGH	
	Sidhnai	86,922	78,222	HIGH	
	Sulemanki	127,021	127,021	HIGH	
	Islam	84,889	84,889	MEDIUM	

WEEKLY OUTLOOK

(2nd September to 8th September)

- Very high to Exceptionally High Flows (subject to releases from Indian reservoirs) in Rivers Sutlej, Ravi, and Chenab are expected, along with the associated nullahs of Rivers Ravi and Chenab during 2nd to 4th September (then continue downstream onwards). Urban flooding is also expected in Lahore, Gujranwala and Gujrat Divisions during next 72-hours.
- EXCEPTIONALLY High Flood level will continue in river Sutlej at Ganda Singh Wala.
- River Chenab at Panjnad is expected to attain Very High to Exceptionally High Flood during 4th to 5th September.

HYDROLOGICAL SITUATION AT 1500 PST

- The water flow in RIVER RAVI at JASSAR is in **LOW FLOOD LEVEL**, at SHAHDRA it is in **MEDIUM FLOOD LEVEL**, at BALLOKI, it is at **VERY HIGH FLOOD LEVEL**, and at SIDHNAI, it is in **HIGH FLOOD LEVEL**.
- The water flow in RIVER CHENAB at KHANKI and QADIRABAD is at **MEDIUM FLOOD LEVEL** and TRIMMU is at **VERY HIGH FLOOD LEVEL**.
- The water flow in RIVER SUTLEJ at SULEMANKI, it is in **HIGH FLOOD LEVEL**, whereas at ISLAM, it is in **MEDIUM FLOOD LEVEL**.
- The water flow in NULLAH AIK (URA, SIALKOT) is in **LOW FLOOD LEVEL, 4255 cs** (Low level range limits: 2000 to 9000 cs).
- The water flow in NULLAH PALKHU (CANTT, SIALKOT) is in **LOW FLOOD LEVEL, 888 cs** (Low level range limits: 500 to 1000 cs).
- The water flow in NULLAH PALKHU (WAZIRABAD, SIALKOT) is in **HIGH LEVEL, 7420 cs** (High level range limits: 5000 to 10,000 cs).
- The water flow in NULLAH BASANTAR (NAROWAL) is in **LOW FLOOD LEVEL, 2908cs** (Low level range limits: 700 to 4700 cs).
- All other Major Rivers, Nullahs and Hill Torrents are flowing at Normal levels.

LOSS/DAMAGE SITUATION

LATEST FLOOD SITUATION

CUMULATIVE RELIEF AND RESCUE ACTIVITIES (RIVER RAVI, CHENAB & SUTLEJ)

MOUZAS AFFECTED	POPULATION AFFECTED	ESTABLISHED RELIEF CAMPS	ESTABLISHED MEDICAL CAMPS	ESTABLISHED VETERINARY CAMPS	PERSONS EVACUATED/ TRANSPORTED	ANIMALS EVACUATED /TRANSPORTED
3129	2,408,012	390	389	335	932,323	648,062

CUMULATIVE LOSS/DAMAGE SITUATION (RIVER RAVI, CHENAB & SUTLEJ)

DIVISION	DEATHS	INJURED	infra-structure collapse
GUJRANWALA/ GUJRAT	37	8	BUND 1 Breaching section at Qadirabad upstream breached (MB Din) 1 Breaching section breached at Rivaz bridge (Jhang) 1 Breach/ road cut near Garh Maharaja Tehsil AP Sial (Jhang) BRIDGE 1 Bridge on Minor Canal near Kajla Village (Sheikhupura) BUILDINGS 3 Building collapses (Narowal) ROADS Village kot Ishaq vanike tarar (Hafizabad)
FAISALABAD	2	-	BUND 1 Breaching section breached at Rivaz bridge 1 Breach/ road cut near Garh Maharaja Tehsil AP Sial.
SARGODHA	1	-	BRIDGE Left Guide Bund of River Ravi Qutab Shahana bridge
SAHIWAL			ROADS 500 feet partially damaged Sayed Wala Road Near Ravi Moza Jehdu (Okara) Left Guide Bund of River Ravi Qutab Shahana bridge (Sahiwal)
LAHORE	1		
TOTAL	41	8	

MONSOON RAINS LOSS/DAMAGE SITUATION

LOSS/DAMAGES REPORTED IN LAST 6 HOURS



- Structural Collapse
- Skylightening
- Drowning
- Electrocution

TOTAL LOSS/DAMAGES COUNTS FROM 16.06.2025 to 1.09.2025 (1600 HRS)

- Deaths = 182
- Injured = 640
- House damages = 233
- Cattle perished = 121