



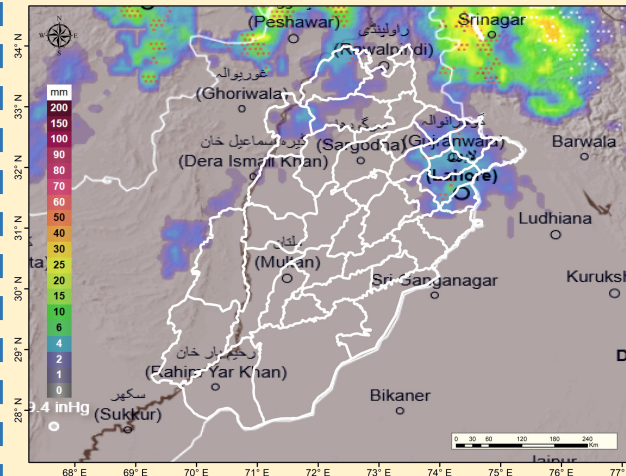
# PROVINCIAL DISASTER MANAGEMENT AUTHORITY

## DAILY SITUATION REPORT



### LAST 24 HOURS WEATHER SITUATION

#### MAXIMUM PRECIPITATION (mm) LAST 24 HOURS

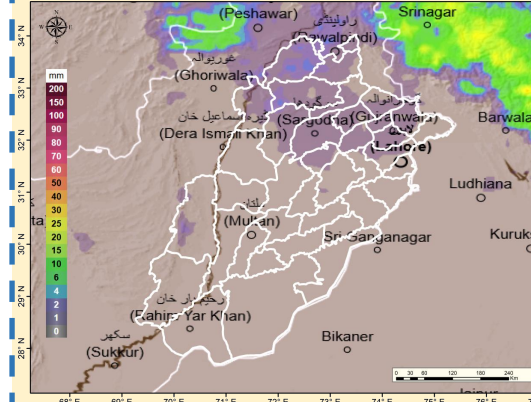


#### Maximum Rainfall (mm) recorded (last 24 Hours) 08 AM (21.05.2026) till 08 AM (22.05.2026)

- Murree = 20
- DG Khan (Vehova) = 09
- Mangla = 07
- Rawalpindi
- Chaklala = 06, Gawalmandi = 05
- Shamsabad = 03, Pirwidahi = 02
- New Kattarian = 01
- Narawal = 06
- Bhakkar = 04
- TT Singh = 02
- Lahore Airport = 01, City = Trace
- Chakwal & Kasur = 01
- Joharabad, Okara, Layyah (Karor), Jhelum = Trace

### NEXT 24 HOURS WEATHER SITUATION

#### MAXIMUM PRECIPITATION (mm) NEXT 24 HOURS

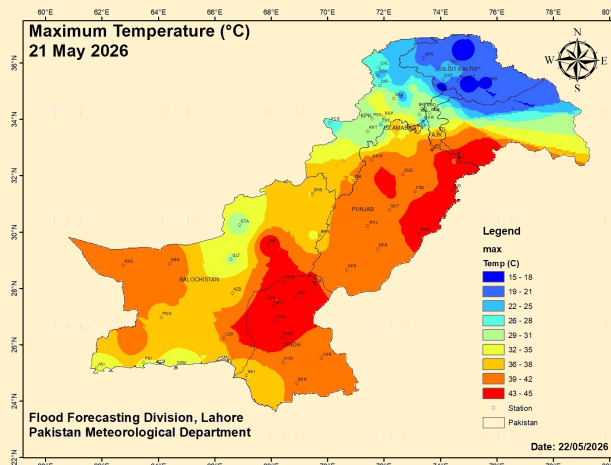


#### WEATHER FORECAST (24 HOURS)

Friday

- Mainly hot and dry weather is expected in most districts of the province.
- Partly cloudy weather accompanied with windstorm-rain/thunderstorm (isolated hailstorm) is expected at isolated places in Rawalpindi, Jhelum, Chakwal, Attock, Murree, Galiyat, Mandi Bahauddin, Gujrat, Sialkot, Gujranwala, Sargodha, Noorpurthal, Jhang, Faisalabad, Khushab, Mianwali, Bhakkar and surroundings.

#### Maximum Temperatures recorded in last 24 hours



- DG Khan = 45°C
- Lahore = 44°C
- Sahiwal = 44°C
- Multan = 44°C
- Sargodha = 44°C
- Jhelum = 44°C
- Faisalabad = 44°C
- Bahawalpur = 43°C
- Attock = 41°C
- Chakwal = 41°C
- Rawalpindi = 40°C
- Murree = 29°C

#### Weekly Dams Situation

##### CATCHMENTS RESERVOIRS - WEEKLY STATUS UPDATES

RIVERS	DAMS	MCL* (Feet)	Current Year		Current Status
			Filled Status	Trend	
INDUS	Tarbela Dam	1550.00	19%	Decreasing	Normal
JHELUM	Mangla Dam	1242.00	31%	Increasing	Normal
SUTLEJ	Bhakra Dam	1680.00	30%	Decreasing	Normal
BEAS	Pong Dam	1390.00	36%	Decreasing	Normal
RAVI	Thein Dam	1732.00	64%	Decreasing	Normal

MCL\* = Maximum Conservation Level

## WEATHER ADVISORY - HEATWAVE

### DUST-THUNDER/RAIN WITH OCCASIONAL GAPS PREDICTED IN UPPER PARTS IN COMING DAYS. A TEMPORARY RELIEF FROM VERY HOT WEATHER IN UPPER PARTS

Met office has informed that a westerly wave is likely to approach northwestern parts of the country on 18th May (Night) and likely to persist in upper parts till 23rd May. Under the influence of this weather system:

- **Dust-thunderstorm/rain with isolated hailstorm** is expected in **Murree, Galiyat, Rawalpindi, Attock, Chakwal, Jhelum, Khushab, Joharabad, Bhakkar, Layyah, Sargodha, Mianwali, Faisalabad, Jhang, Lahore, Sheikhpura, Okara, Gujranwala, Hafizabad, Mandi Bahuddin, Sialkot, Narowal** from **18th (Night) to 23rd May** with occasional gaps.

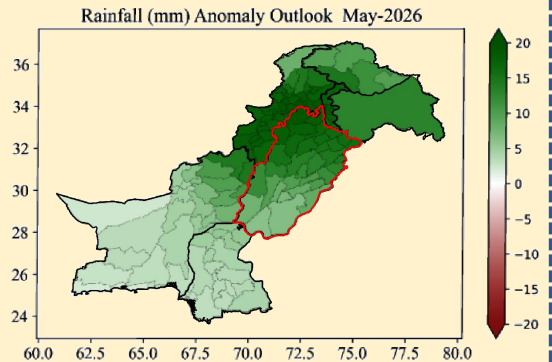
### IMPACTS & PREVENTIVE MEASURES

- Windstorm and lightning may **damage weak structures** (electric poles, bill boards, solar panels etc.) during the forecast period.
- **Very hot weather** is likely to continue in southern parts of the province in coming days.
- Farmers are advised to **manage their crop activities** in accordance with the dust storm and rain prediction.
- Tourists and travelers are advised to remain cautious and **avoid unnecessary travelling** during the forecast period.

## MONTHLY RAINFALL OUTLOOK - MAY

### According to Met Department;

- A general tendency for **above-normal rainfall** is anticipated across the country during May 2026, with the most pronounced positive anomalies concentrated over the northern half of the country, particularly **adjoining areas of northern Punjab**.
- Whereas **slightly above-normal rainfall** is expected over **Southern Punjab** during the forecast month.
- Overall, the **wet conditions** are expected to persist with a clear north-to-south weakening gradient



### POSSIBLE IMPACTS

- **Above-normal rainfall** in northern areas of Punjab is likely to improve water availability, reducing reliance on stored water for agriculture.
- **The increased rainfall** may fulfill the irrigation need for seasonal vegetables and newly sown Kharif crops in Punjab.
- **Above-normal temperatures** may support harvesting of remaining Rabi crops.
- **Spatial temperature gradient** may cause strong winds, dust storm, and hailstorm which may affect the seasonal crops, vegetables and orchard; therefore, timely harvesting of Rabi crops is advised to minimize potential losses.
- **Above-normal temperatures** in May could increase the potential for heat spikes and heatwave conditions especially over the plain areas of Punjab; despite the expected above-normal rainfall, these regions may still experience heat-like conditions between rainfall spells.
- **The rising temperatures** particularly over southern regions, may increase vector-borne disease risk like Dengue.
- **Above-normal rainfall** may increase the risk of flash floods and landslides, particularly in mountainous and flood-prone areas.
- Additionally, this could also raise the likelihood of localized urban flooding in major cities, especially in poorly drained and low-lying areas.
- **Heavy rainfall** along with the hailing and windstorm may damage public property (electric poles, bill boards and solar panels etc.)
- **Above-normal rainfall** is expected to enhance runoff in the upper Indus basin.