



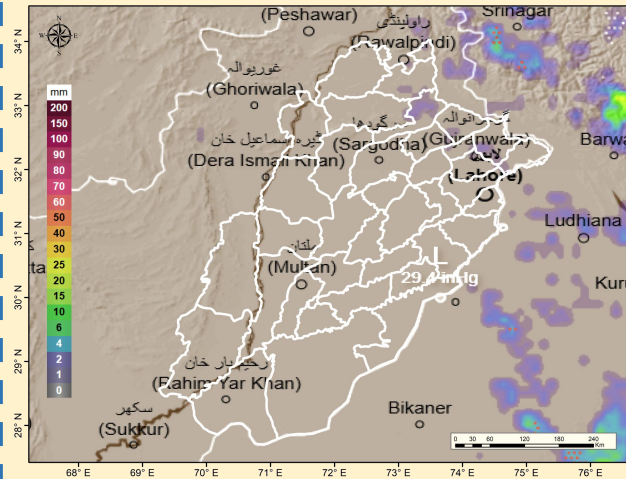
# PROVINCIAL DISASTER MANAGEMENT AUTHORITY

## DAILY SITUATION REPORT



### LAST 24 HOURS WEATHER SITUATION

#### MAXIMUM PRECIPITATION (mm) LAST 24 HOURS

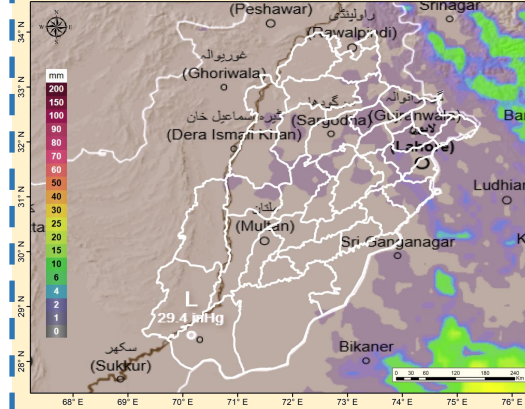


#### Maximum Rainfall (mm) recorded (last 24 Hours) 08 AM (28.05.2026) till 08 AM (29.05.2026)

➤ Jhelum & Sialkot (Airport & City) = Trace

### NEXT 24 HOURS WEATHER SITUATION

#### MAXIMUM PRECIPITATION (mm) NEXT 24 HOURS



#### WEATHER FORECAST (24 HOURS)

Friday

- Hot and dry weather is expected over most districts of the province.
- However, partly cloudy weather is likely in upper districts with rain-windstorm/thunderstorm at isolated places in Murree, Gulyat, Chakwal, Attock, Jhelum, Mangla, Sialkot, Narowal, Gujarat, Gujranwala, Mandi Bahauddin, Faisalabad, Jhang, Sahiwal, Bahawalnagar.

#### Maximum Temperatures recorded in last 24 hours



- DG Khan = 47°C
- Bahawalpur = 45°C
- Faisalabad = 45°C
- Sahiwal = 44°C
- Multan = 44°C
- Attock = 44°C
- Sargodha = 44°C
- Lahore = 42°C
- Jhelum = 40°C
- Chakwal = 40°C
- Rawalpindi = 40°C
- Murree = 28°C

#### DAILY DISCHARGE REPORT - 0600Hrs

River	Site	Inflow	Outflow
Indus دریائے سندھ	Tarbela	66,000	123,600
	Kalabagh	133,886	126,506
	Chashma	130,298	115,098
	Taunsa	115,483	91,146
	Guddu	73,229	64,396
	Sukkur	57,092	18,282
Kabul دریائے کابل	Kotri	15,310	0
	Nowshera	39,200	39,200
Jhelum دریائے جہلم	Mangla	35,000	29,615
	Rasul	30,133	7,990
Chenab دریائے چناب	Marala	16,250	7,000
	Khanki	10,082	3,732
	Q.Abad	19,525	19,525
	Trimmu	22,615	7,515
	Panjnad	11,668	0
Ravi دریائے راوی	Jassar	1,009	1,009
	Shahdara	821	821
	Balloki	24,000	0
Sutlej دریائے ستلج	Sidhna	13,500	0
	GS Wala	0	0
	Sulemanki	14,911	3,559
	Islam	1,730	0

#### Weekly Dams Situation

#### CATCHMENTS RESERVOIRS - WEEKLY STATUS UPDATES

RIVERS	DAMS	MCL* (Feet)	Current Filled Status	Current Status
INDUS	Tarbela Dam	1550.00	1454.05	Normal
JHELUM	Mangla Dam	1242.00	1167.35	Normal
SUTLEJ	Bhakra Dam	1680.00	1582.36	Normal
BEAS	Pong Dam	1390.00	1331.57	Normal
RAVI	Thein Dam	1732.00	1690.65	Normal

MCL\* = Maximum Conservation Level

## WEATHER ADVISORY - HEATWAVE

### HEATWAVE CONDITION PREDICTED IN THE PROVINCE DURING EID HOLIDAYS

Met office has informed that a high pressure is likely to develop in upper atmosphere on 25th May and likely to strengthen on 26th May. Under the influence of this system, moderate to severe Heatwave conditions are likely to develop over the province from 25th to 31st May.

- **Maximum temperature** is likely to remain **05 – 07 °C above normal** and may rise to **42 - 45 °C** in the districts of **Rawalpindi, Attock, Chakwal, Jhelum, Lahore, Gujrat, Gujranwala, Hafizabad, Mandi Bahauddin, Sialkot, Narowal, Okara, Kasur, Faisalabad.**
- **Maximum temperature** is likely to remain **04 – 06 °C above normal** and may rise to **47 - 50 °C** in the districts of **Dera Ghazi Khan, Multan, Khanewal, Pakpattan, Rahim Yar Khan, Rajanpur, Bahawalpur, Bahawalnagar, Bhakkar, Layyah, Kot Addu, Sargodha, Joharabad, Khushab, Mianwali, Noor Pur Thal, Jhang, Toba Tek Sing and Sahiwal.**
- **Night temperatures** are also likely to rise during the forecast period.

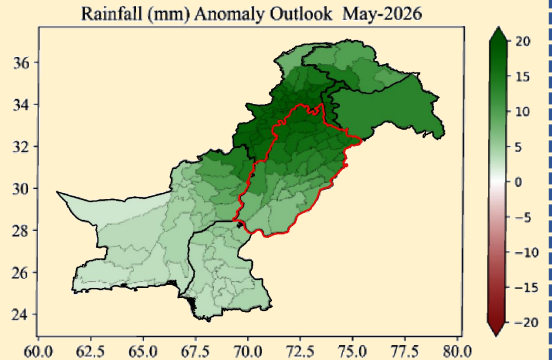
### IMPACTS & PREVENTIVE MEASURES

- Due to heatwave condition, general public especially children, women and senior citizens are **advised to be extra cautious.**
- Farmers are advised to **manage their crop activities** keeping in view the weather conditions and take care of their livestock as well.
- General public is advised to **avoid unnecessary exposure to direct sunlight** from (1000 to 1600 PST) and remain hydrated.
- **Electricity demand/consumption may increase** during the forecast period.
- **Judicious use of water is requested** in all aspects of life.

## MONTHLY RAINFALL OUTLOOK - MAY

### According to Met Department;

- A general tendency for **above-normal rainfall** is anticipated across the country during May 2026, with the most pronounced positive anomalies concentrated over the northern half of the country, particularly **adjoining areas of northern Punjab.**
- Whereas **slightly above-normal rainfall** is expected over **Southern Punjab** during the forecast month.
- Overall, the **wet conditions** are expected to persist with a clear north-to-south weakening gradient



### POSSIBLE IMPACTS

- **Above-normal rainfall** in northern areas of Punjab is likely to improve water availability, reducing reliance on stored water for agriculture.
- **The increased rainfall** may fulfill the irrigation need for seasonal vegetables and newly sown Kharif crops in Punjab.
- **Above-normal temperatures** may support harvesting of remaining Rabi crops.
- **Spatial temperature gradient** may cause strong winds, dust storm, and hailstorm which may affect the seasonal crops, vegetables and orchard; therefore, timely harvesting of Rabi crops is advised to minimize potential losses.
- **Above-normal temperatures** in May could increase the potential for heat spikes and heatwave conditions especially over the plain areas of Punjab; despite the expected above-normal rainfall, these regions may still experience heat-like conditions between rainfall spells.
- **The rising temperatures** particularly over southern regions, may increase vector-borne disease risk like Dengue.
- **Above-normal rainfall** may increase the risk of flash floods and landslides, particularly in mountainous and flood-prone areas.
- Additionally, this could also raise the likelihood of localized urban flooding in major cities, especially in poorly drained and low-lying areas.
- **Heavy rainfall** along with the hailing and windstorm may damage public property (electric poles, bill boards and solar panels etc.)
- **Above-normal rainfall** is expected to enhance runoff in the upper Indus basin.