



PDMA

Board of Revenue, Punjab PDMA Punjab Daily Covid-19 Vaccination Sit-Rep

24-08-2021 11:59 PM



BOR

Covid-19 Vaccination Summary

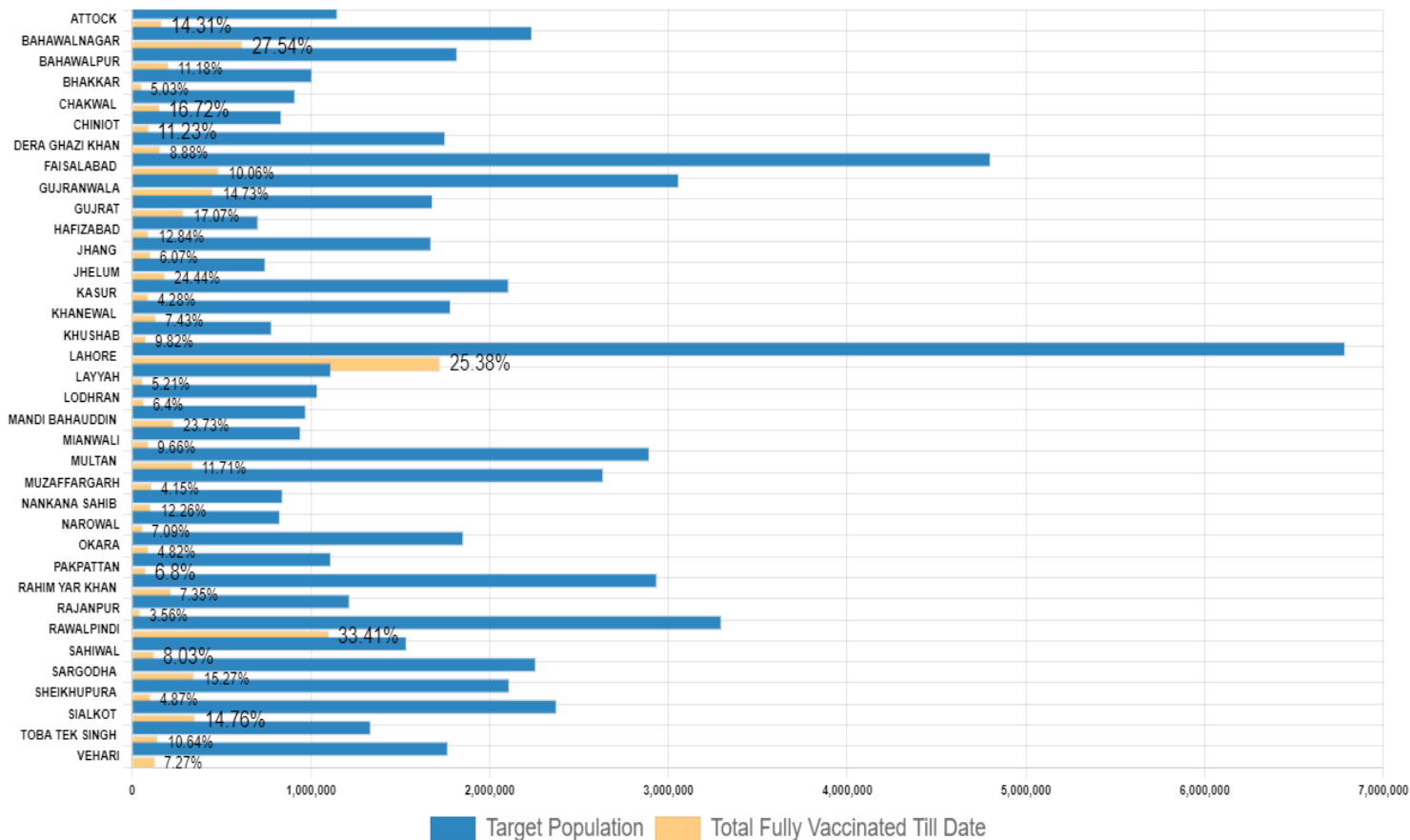
25,348,409 persons have been vaccinated till date covering **37.88%** individuals across Punjab.

617,396 Persons have been vaccinated today against assigned target of **432,690** in **36** districts of Punjab.

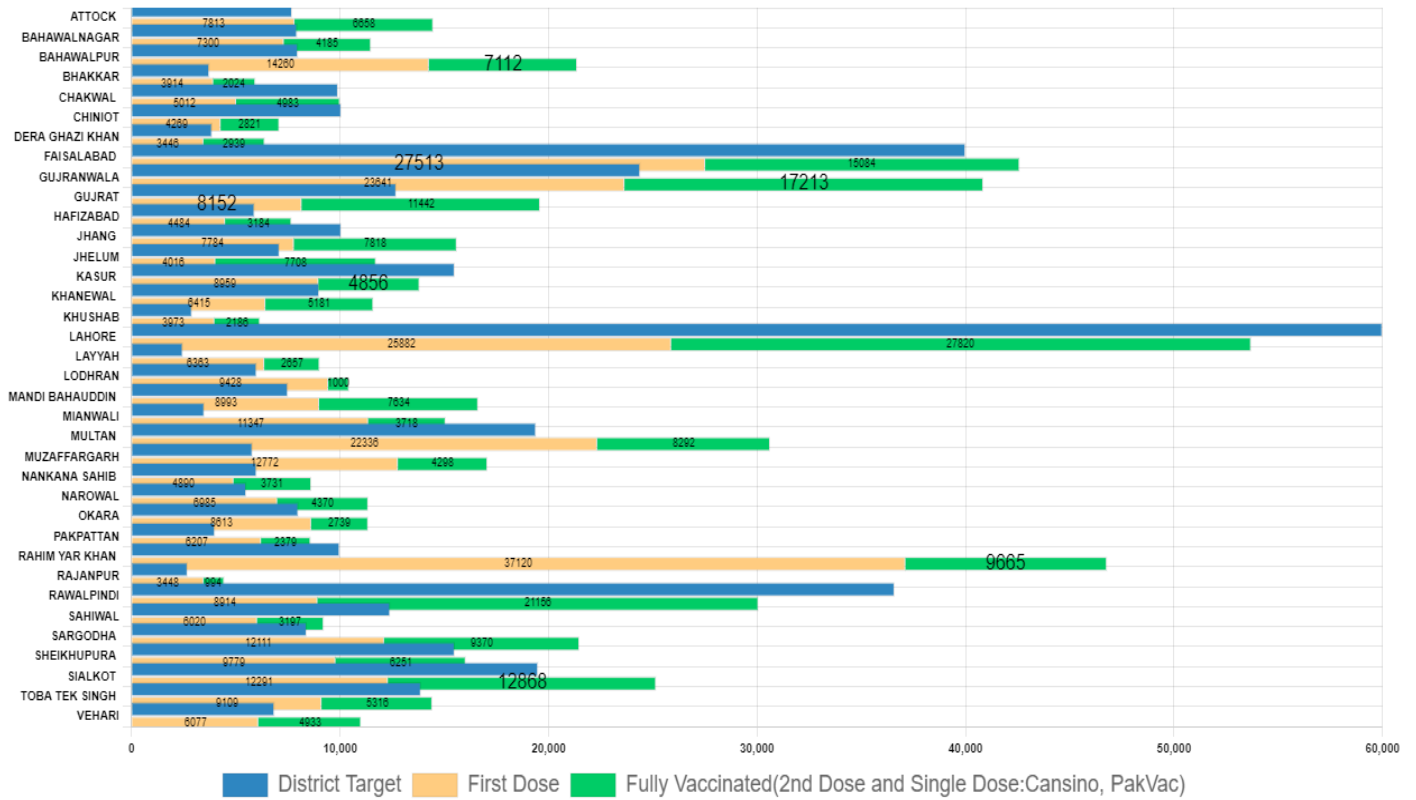
Daily Vaccination Summary of Punjab

Total CVCs Operational	Total Vaccinated Population till date	Targeted Population	%age covered
800	25,348,409	66,911,622	37.88%

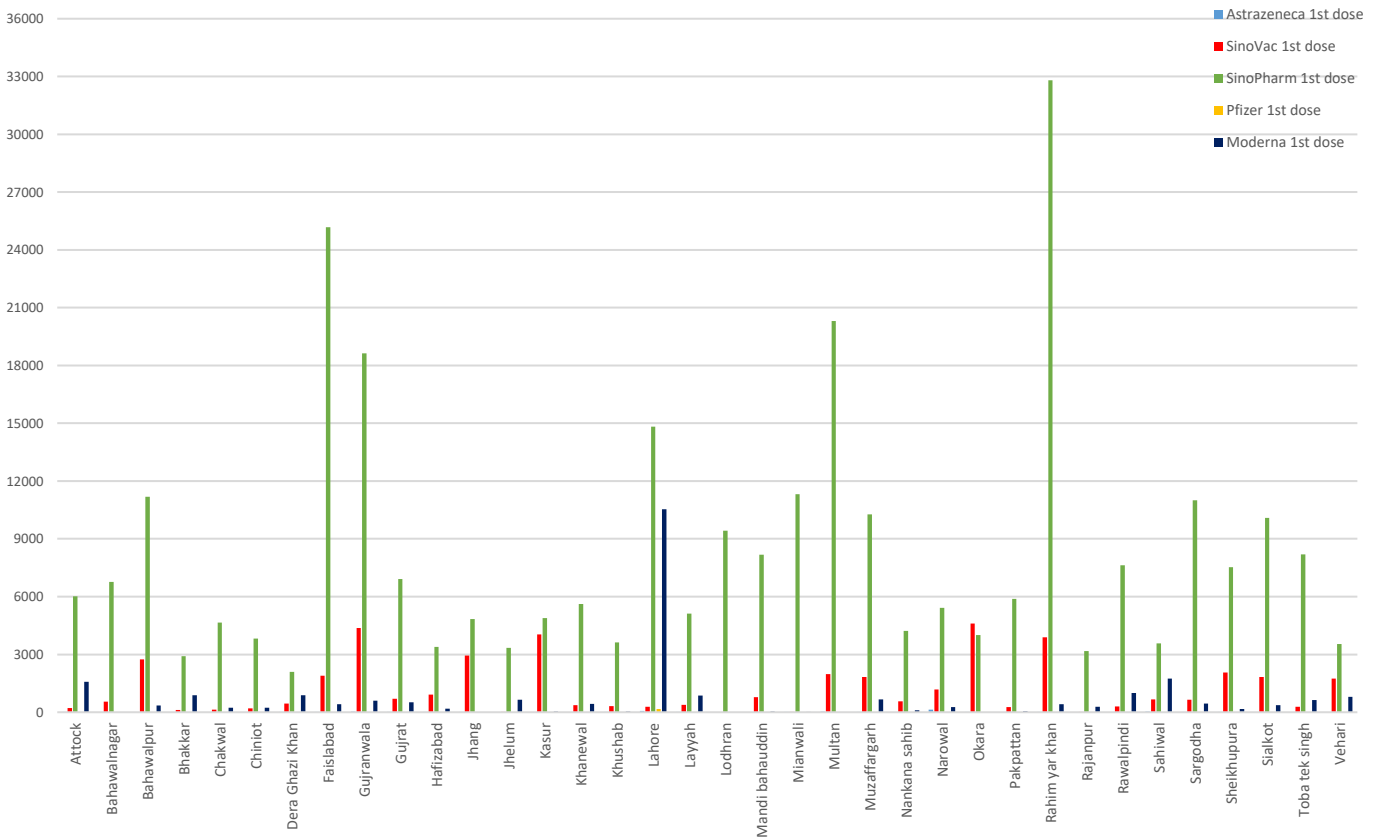
Percentage of Population Fully Vaccinated (2nd Dose & 1 time dose)



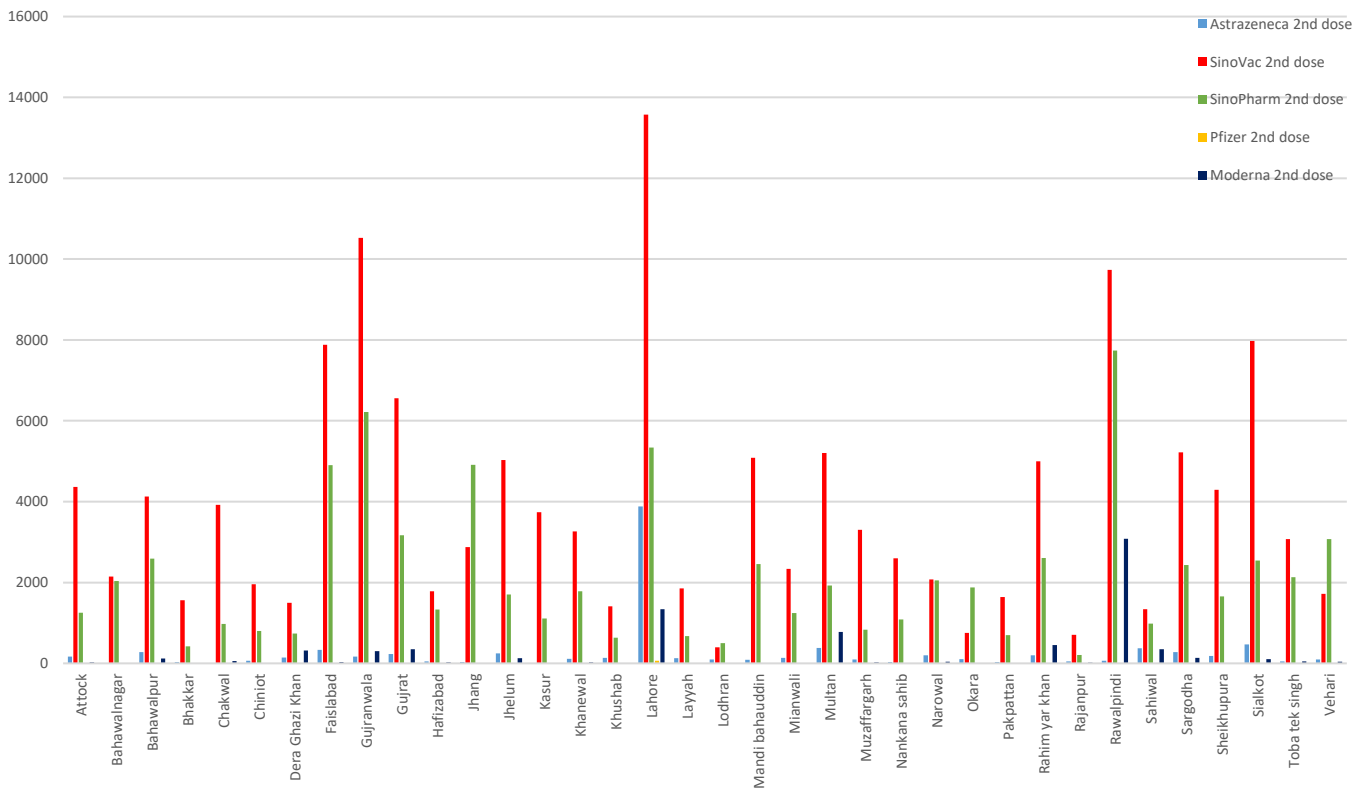
Daily Vaccination Target Vs Achievement



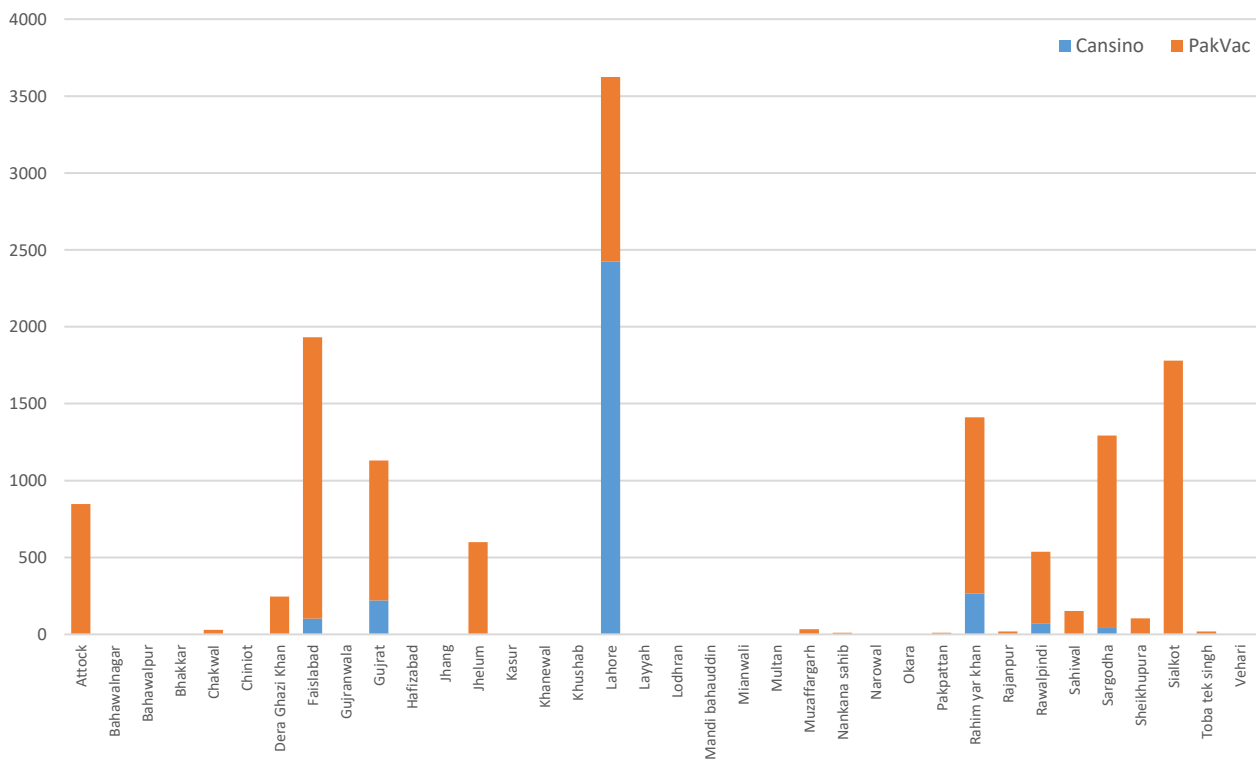
1st dose Administered Today



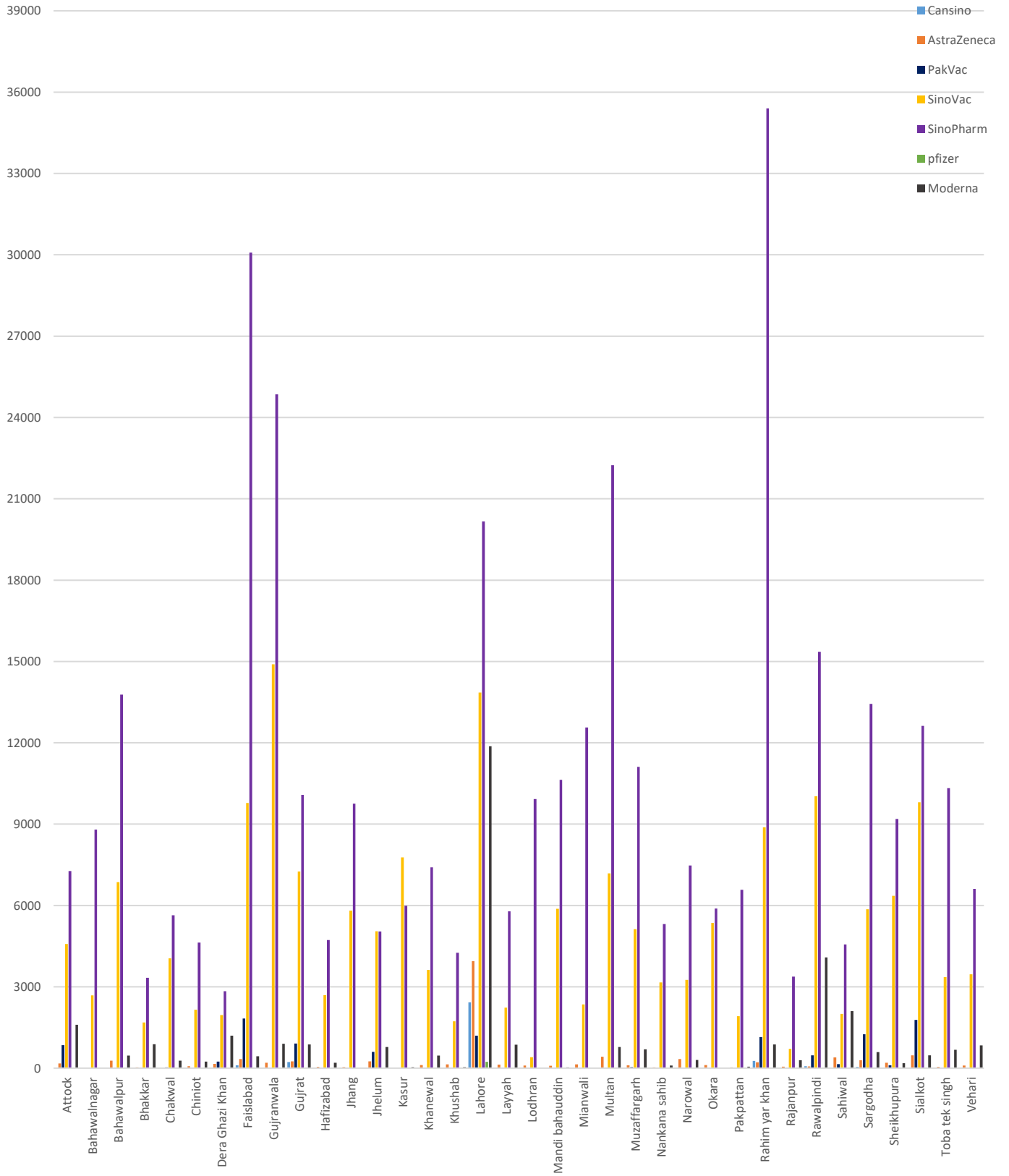
2nd dose Administered Today



Single dose Vaccine Administered Today (Cansino and PakVac)



Districtwise Vaccine Consumed Today



Vaccines Stock Available

District	Cansino	Astra Zenca	Pak Vac	Sino Vac	SinoPham	Pfizer	Moderna	others	Vaccines Consumed Today	Total
Attock	0	550	3930	15214	27909	0	3070	0	14471	50673
Bahawalnagar	0	440	50	20858	28228	0	1380	0	11485	50956
Bahawalpur	238	1210	0	17696	30330	0	1475	0	21372	50949
Bhakkar	0	768	94	19733	26663	0	3358	0	5938	50616
Chakwal	0	0	4920	16176	58378	0	1110	0	9995	80584
Chiniot	0	1400	0	22136	30420	0	950	0	7090	54906
DG Khan	0	1486	585	20581	27226	0	7854	0	6385	57732
Faisalabad	47	4200	4220	74677	86021	0	395	0	42575	169560
Gujranwala	0	5200	0	54164	67579	0	10790	0	40854	137733
Gujrat	325	2139	7440	66096	112596	0	11073	0	19594	199669
Hafizabad	0	340	0	16189	30157	0	680	0	7668	47366
Jhang	0	543	0	21498	30941	0	41	0	15602	53023
Jhelum	0	4050	3440	21002	42021	0	1680	0	11724	72193
Kasur	0	60	120	13920	14740	0	1680	0	13815	30520
Khanewal	0	910	140	26368	28856	0	1220	0	11596	57494
Khushab	0	1900	20	18202	21151	0	110	0	6159	41383
Lahore	2607	9718	16389	90528	165431	0	13519	0	53702	298192
Layyah	0	1210	110	26734	30472	0	1150	0	9020	59676
Lodhran	0	1116	0	32019	13903	0	0	0	10428	47038
MB Din	0	1510	0	13849	34336	0	32	0	16627	49727
Mianwali	0	1000	180	17188	30082	0	0	0	15065	48450
Multan	0	1958	9410	76817	92393	0	777	0	30628	181355
Muzaffargarh	120	494	835	34372	53057	0	2654	0	17070	91532
Nankana sahib	93	3060	90	21748	28834	0	390	0	8621	54215
Narowal	0	853	0	12764	22625	0	471	0	11355	36713
Okara	0	1340	30	26608	32821	0	50	0	11352	60849
Pakpattan	0	580	1390	24306	31669	0	130	0	8586	58075
Rahim Yar khan	0	2190	6200	29095	34500	0	4950	0	46785	76935
Rajanpur	0	470	1010	23900	24953	0	4090	0	4442	54423
Rawalpindi	2872	1400	19080	51881	238263	0	9615	0	30070	323111
Sahiwal	12	820	20	28210	49862	0	6370	0	9217	85294
Sargodha	620	1315	3728	37698	49043	94	1080	0	21481	93578
Sheikhupura	0	2552	4829	45228	25651	0	10195	0	16030	88455
Sialkot	0	1586	320	50801	74580	0	4230	0	25159	131517
Toba Tek Singh	0	250	140	21868	23319	0	5270	0	14425	50847
Vehari	0	3550	0	28493	40483	0	1267	0	11010	73793
Total	6934	62168	88720	1138617	1759493	94	113106	0	617,396	50847

Completely Vaccinated Population (Both single & double dose)								
24-August-2021								
#	District	Total Population	Target Population	Vaccinated Till Now	% of Population Vaccinated Till Now	Target Today	Vaccinated Today	Target Achieved
1	Attock	1886378	1148969	164365	14.31%	7700	14471	187.94%
2	Bahawalnagar	2975656	2237544	616273	27.54%	7940	11485	144.65%
3	Bahawalpur	3669176	1818970	203422	11.18%	7980	21372	267.82%
4	Bhakkar	1647852	1006815	50643	5.03%	3731	5938	159.15%
5	Chakwal	1495463	912549	152572	16.72%	9905	9995	100.91%
6	Chiniot	1368659	835541	93808	11.23%	10060	7090	70.48%
7	DG Khan	2872631	1752042	155533	8.88%	3863	6385	165.29%
8	Faisalabad	7882444	4803085	483360	10.06%	40000	42597	106.49%
9	Gujranwala	5011066	3058659	450503	14.73%	24400	40854	167.43%
10	Gujrat	2756289	1681227	286962	17.07%	12700	19544	153.89%
11	Hafizabad	1156954	705743	90647	12.84%	5900	7668	129.97%
12	Jhang	2742633	1673483	101505	6.07%	10060	15602	155.09%
13	Jhelum	1222403	745816	182301	24.44%	7100	11724	165.13%
14	Kasur	3454881	2107547	90173	4.28%	15500	13815	89.13%
15	Khanewal	2920233	1782411	132416	7.43%	9000	11596	128.84%
16	Khushab	1280372	781592	76727	9.82%	2897	6159	212.60%
17	Lahore	11119985	6787033	1722217	25.38%	60000	53702	89.50%
18	Layyah	1823995	1112780	57985	5.21%	2457	9020	367.11%
19	Lodhran	1699693	1037378	66374	6.40%	6000	10428	173.80%
20	MB Din	1594039	971908	230668	23.73%	7500	16627	221.69%
21	Mianwali	1542601	943117	91115	9.66%	3491	15065	431.54%
22	Multan	4746166	2894516	338873	11.71%	19400	30628	157.88%
23	Muzaffargarh	4328549	2636425	109529	4.15%	5801	17070	294.26%
24	Nankana sahib	1354986	842951	103357	12.26%	6000	8621	143.68%
25	Narowal	1707575	827388	58662	7.09%	5500	11355	206.45%
26	Okara	3040826	1853874	89378	4.82%	8000	11352	141.90%
27	Pakpattan	1824228	1112449	75680	6.80%	4000	8586	214.65%
28	Rahim yar khan	4807762	2936543	215757	7.35%	9980	46785	468.79%
29	Rajanpur	1996039	1217534	43351	3.56%	2689	4442	165.19%
30	Rawalpindi	5402380	3297436	1101526	33.41%	36600	30070	82.16%
31	Sahiwal	2513011	1535711	123371	8.03%	12404	9217	74.31%
32	Sargodha	3696212	2259188	344934	15.27%	8400	21481	255.73%
33	Sheikhupura	3460004	2110859	102769	4.87%	15500	16030	103.42%
34	Sialkot	3894938	2375139	350621	14.76%	19500	25154	128.99%
35	Toba tek singh	2191495	1335909	142074	10.64%	13880	14425	103.93%
36	Vehari	2902081	1767442	128514	7.27%	6852	11010	160.68%
	SUM	109,989,655	66,907,573	8,827,965	13.19%	432690	617363	142.68%

